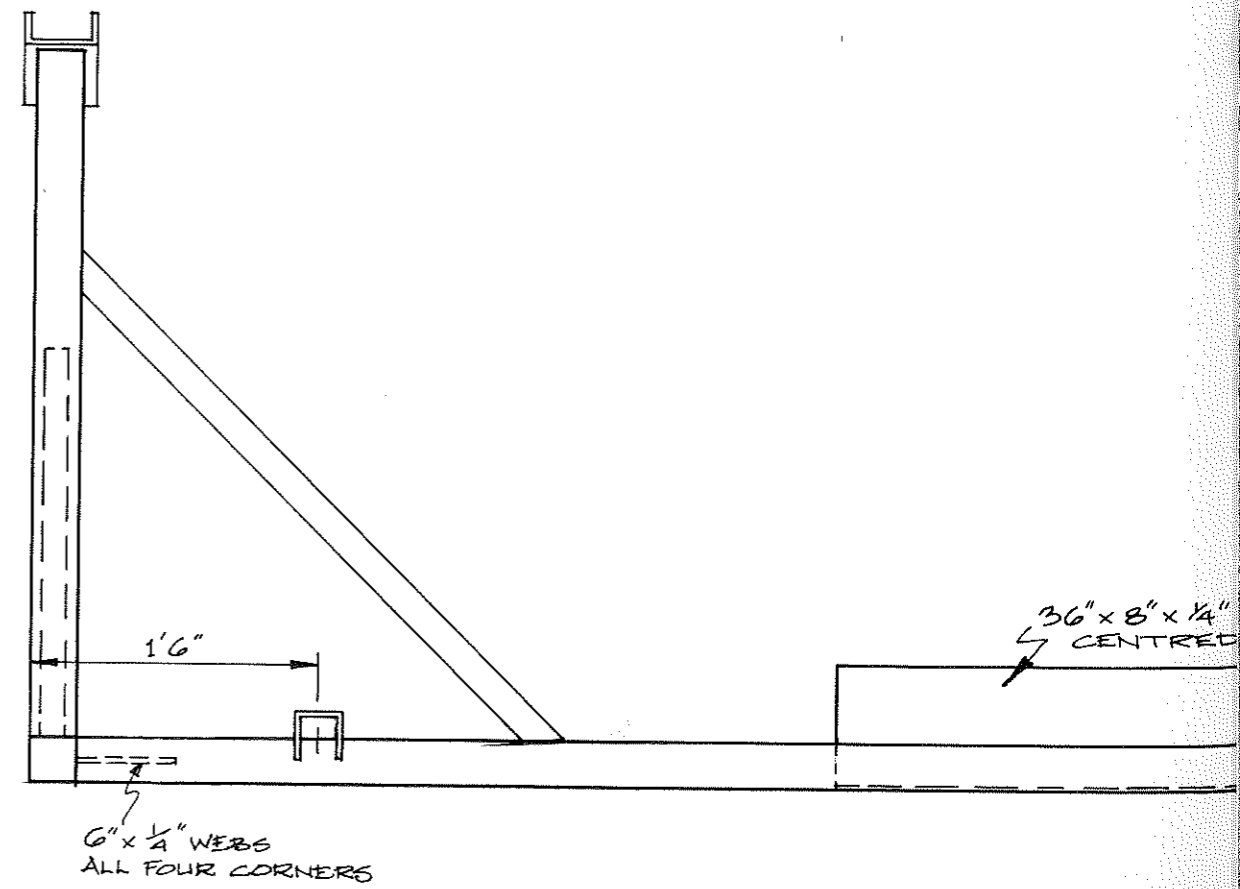
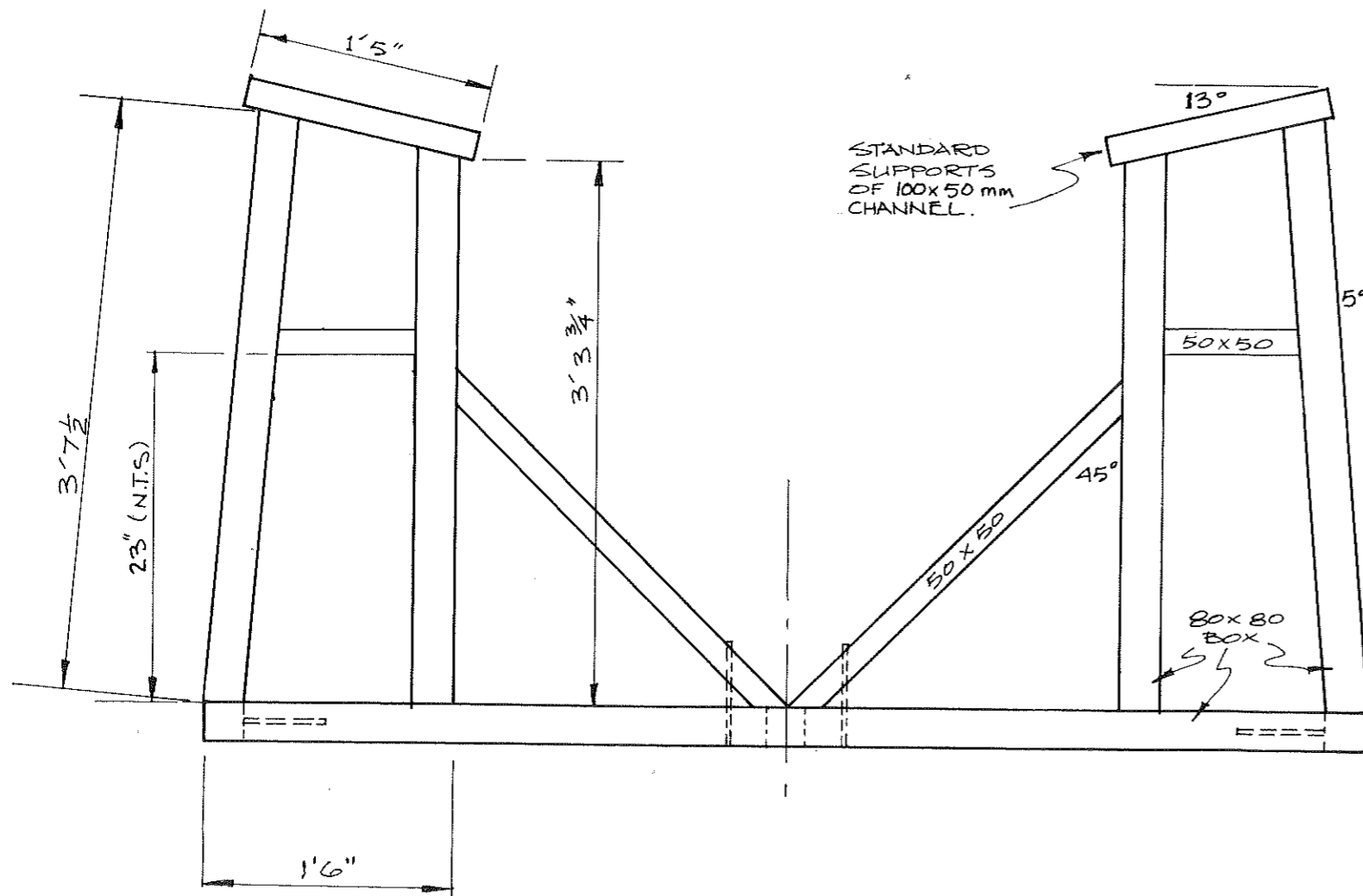


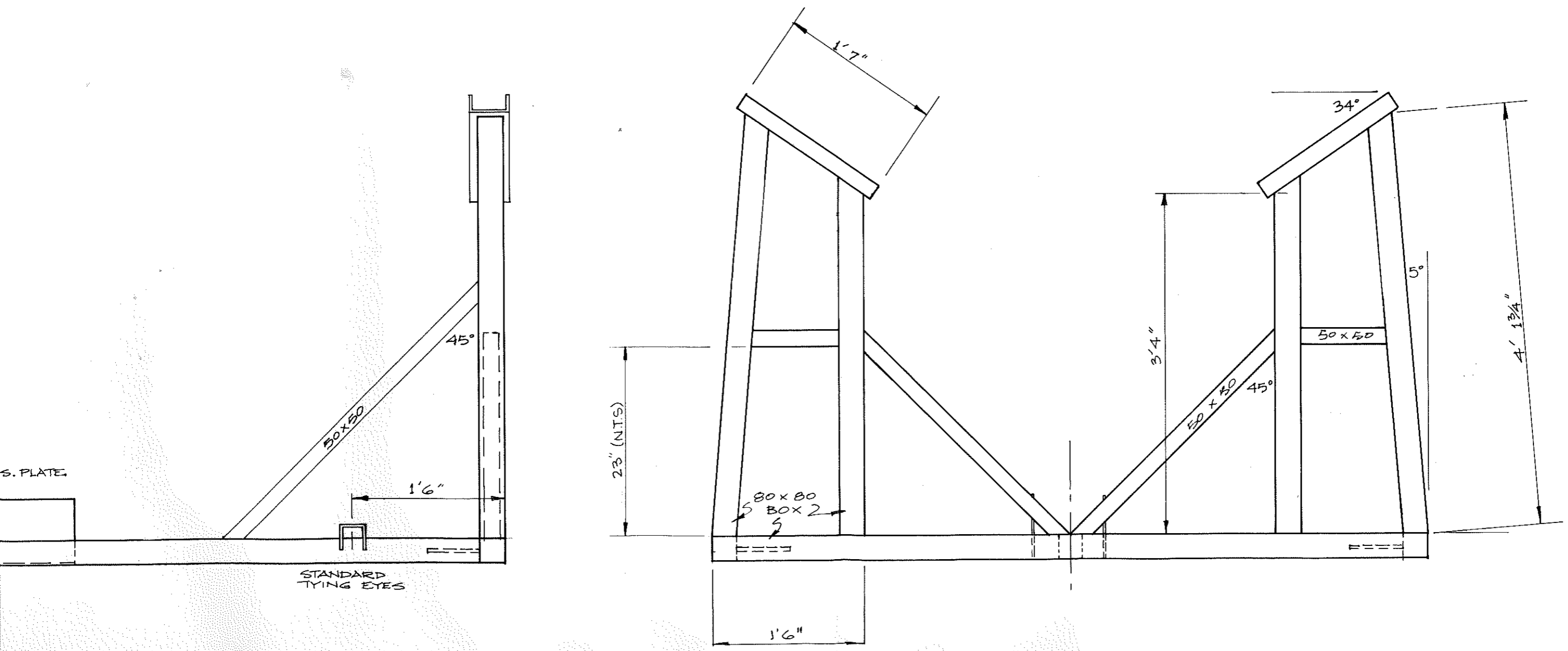
Scanned in four sections.

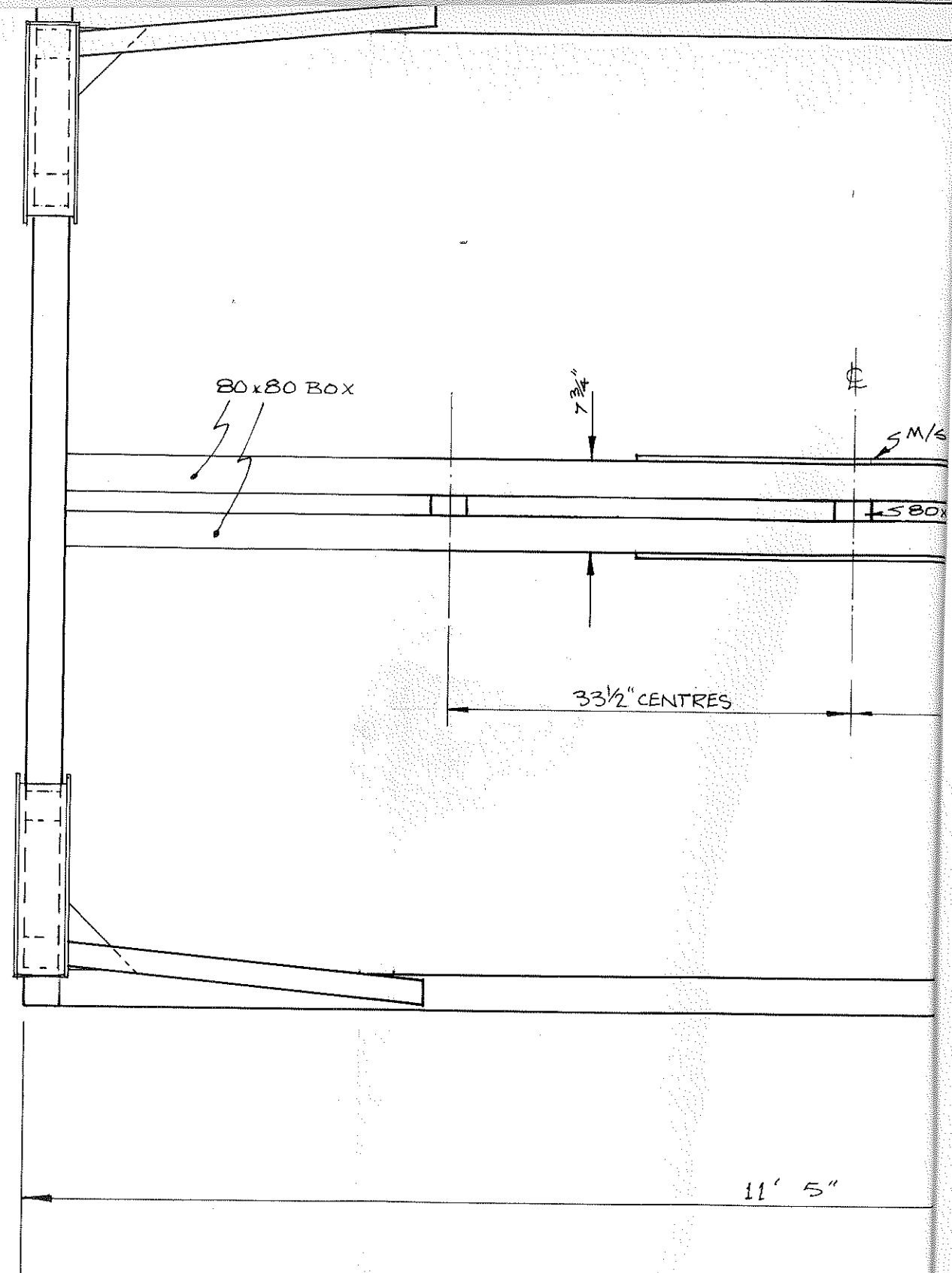
| | |
|----|----|
| A1 | A2 |
| B1 | B2 |

A1



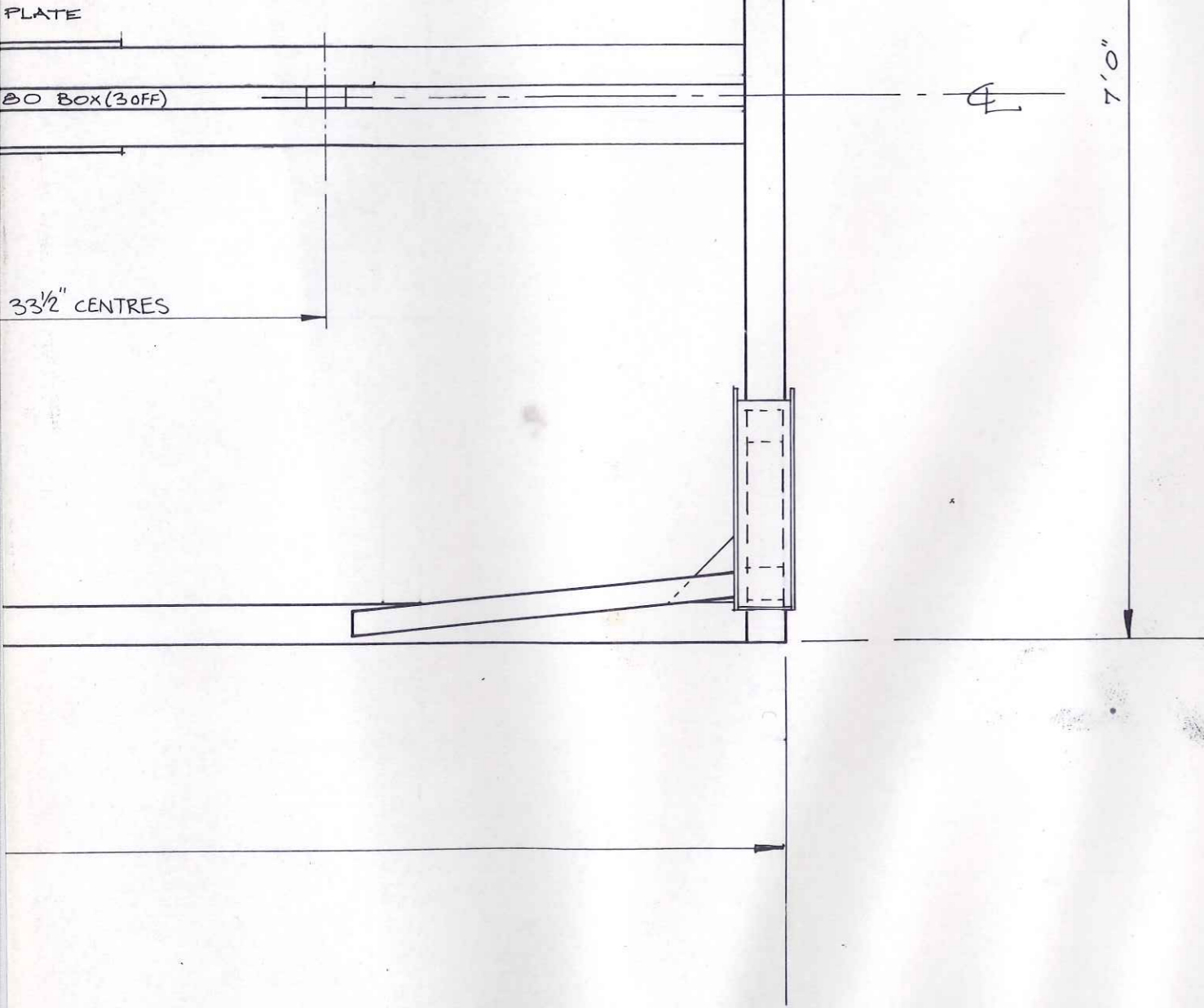
A2





B2

80 x 80
BOX



7'0"

UNCONTROLLED

ISSUED BY
MARINE PROJECTS
DRAWING OFFICE
-4 SEP 1996

| ISSUE | DATE | MODIFICATION | INT. |
|-------|--------|---|----------|
| B | 2-5-89 | HORIZONTAL 50x50mm BRACES BETWEEN UPRIGHTS MOVED DOWN BY 2". 2" MAST SUPPORT ANGLE REMOVED. THIS CRADLE NOW STANDARD. | J.FROUD. |
| A | 8.8.88 | WIDTH OF SUPPORT STRUTS ADDED | ECT. |

MARINE PROJECTS (PLYMOUTH) LTD.
 ECLIPSE 33
 TRANSPORT CRADLE
 DR. JWDW 29-10-87
 SCALE 1" : 12" DRG. N: MS 33 003