

Title MOODY 29

Material

Drawn by P D H

Date 13-11-80

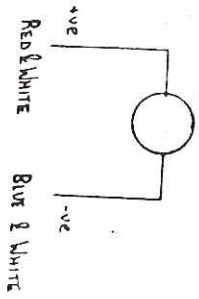
Scale -

Drwg. No. M29-037

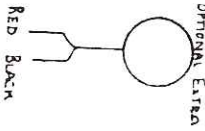
MARINE PROJECTS PLYMOUTH LTD.

Newport Street, Plymouth. Telephone 27771

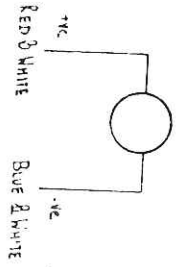
BUNK LIGHTS



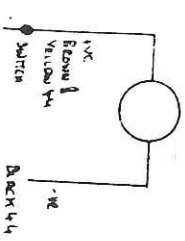
EDGE  
OPTIONAL EXTRA



BUNK LIGHTS



SLUICE PUMP



FRESH WATER PUMP  
OPTIONAL EXTRA

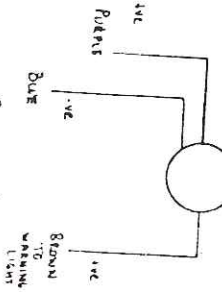
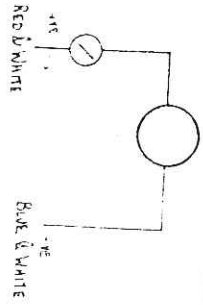
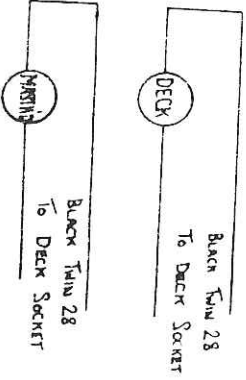


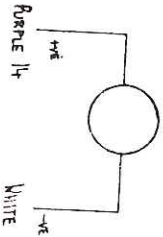
CHART TABLE LIGHT



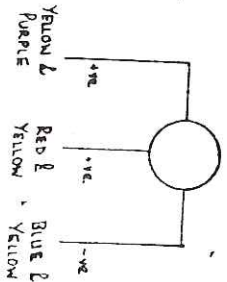
NAVIGATION LIGHTS



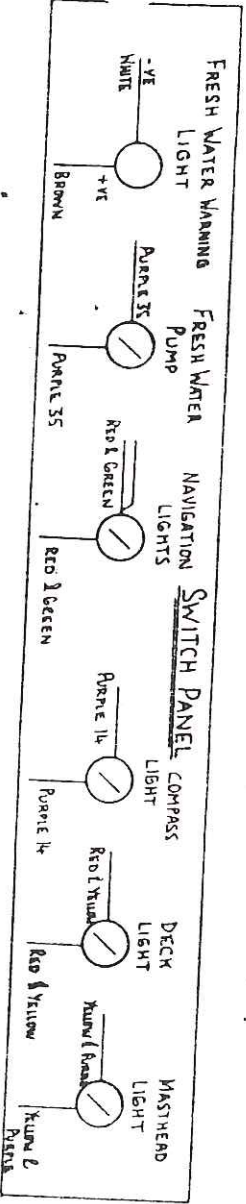
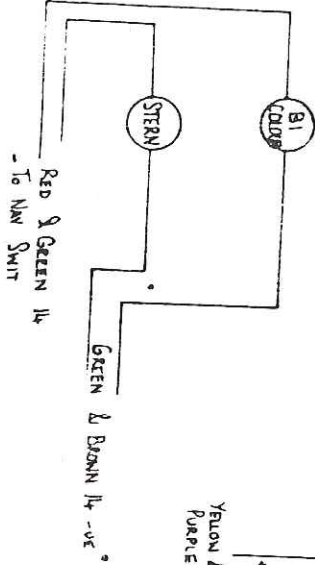
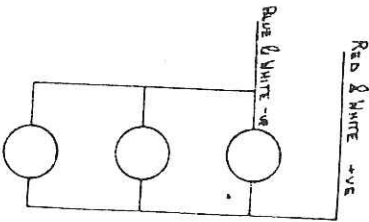
COMPASS LIGHT



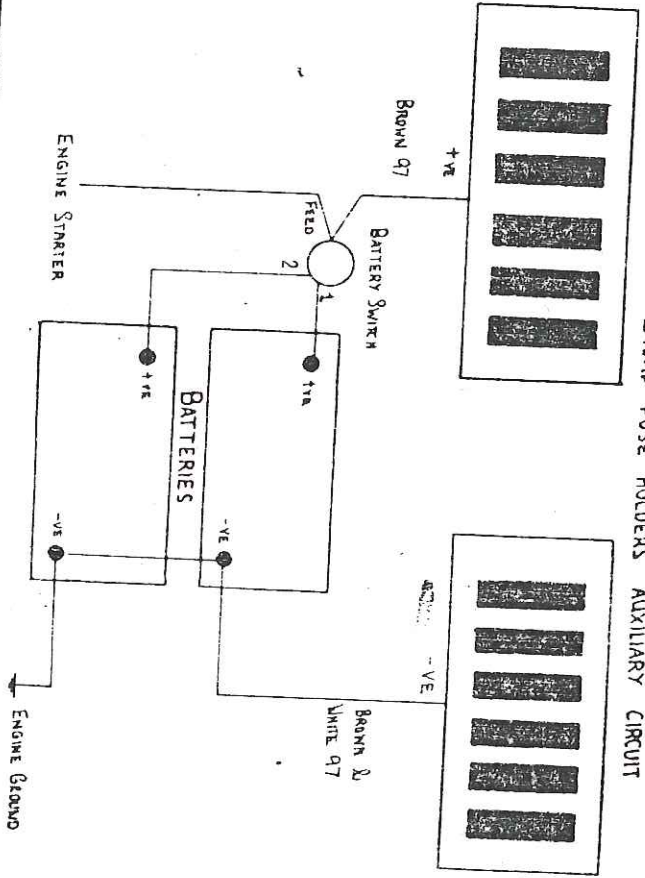
DECK SOCKET

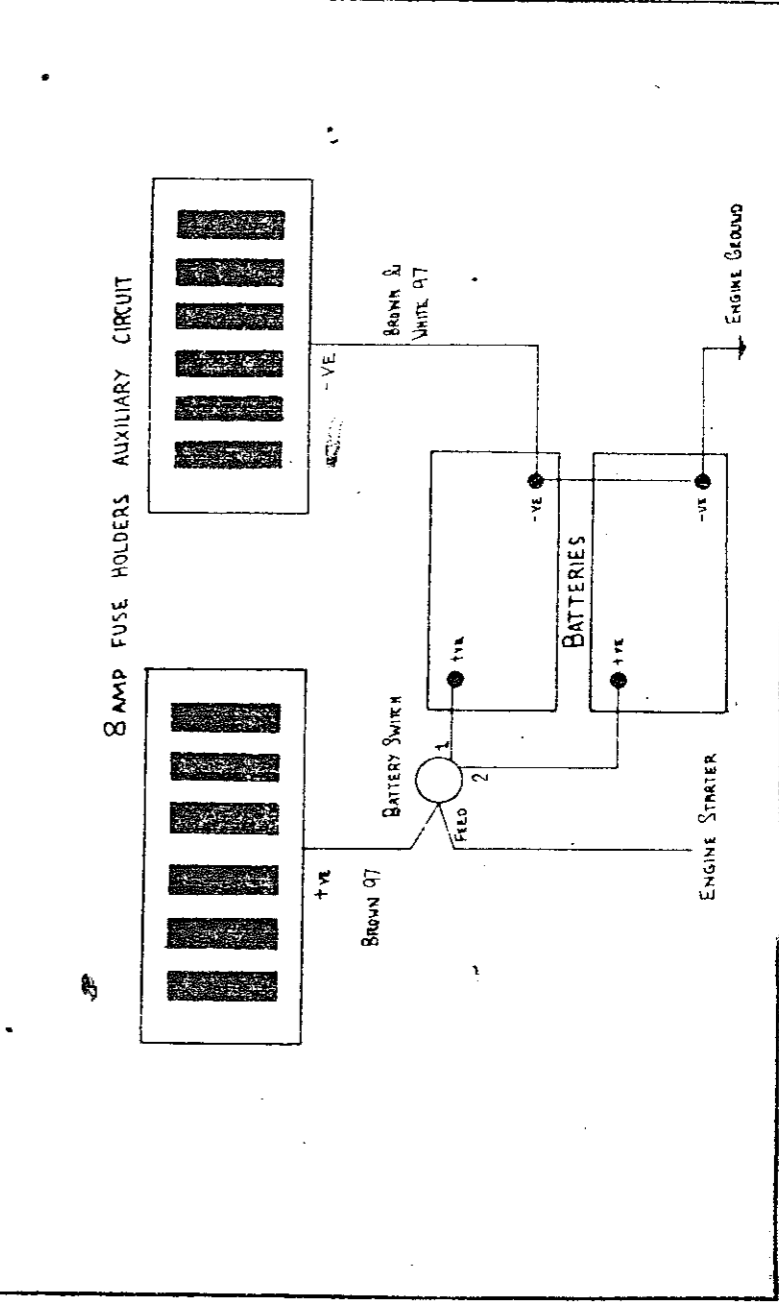
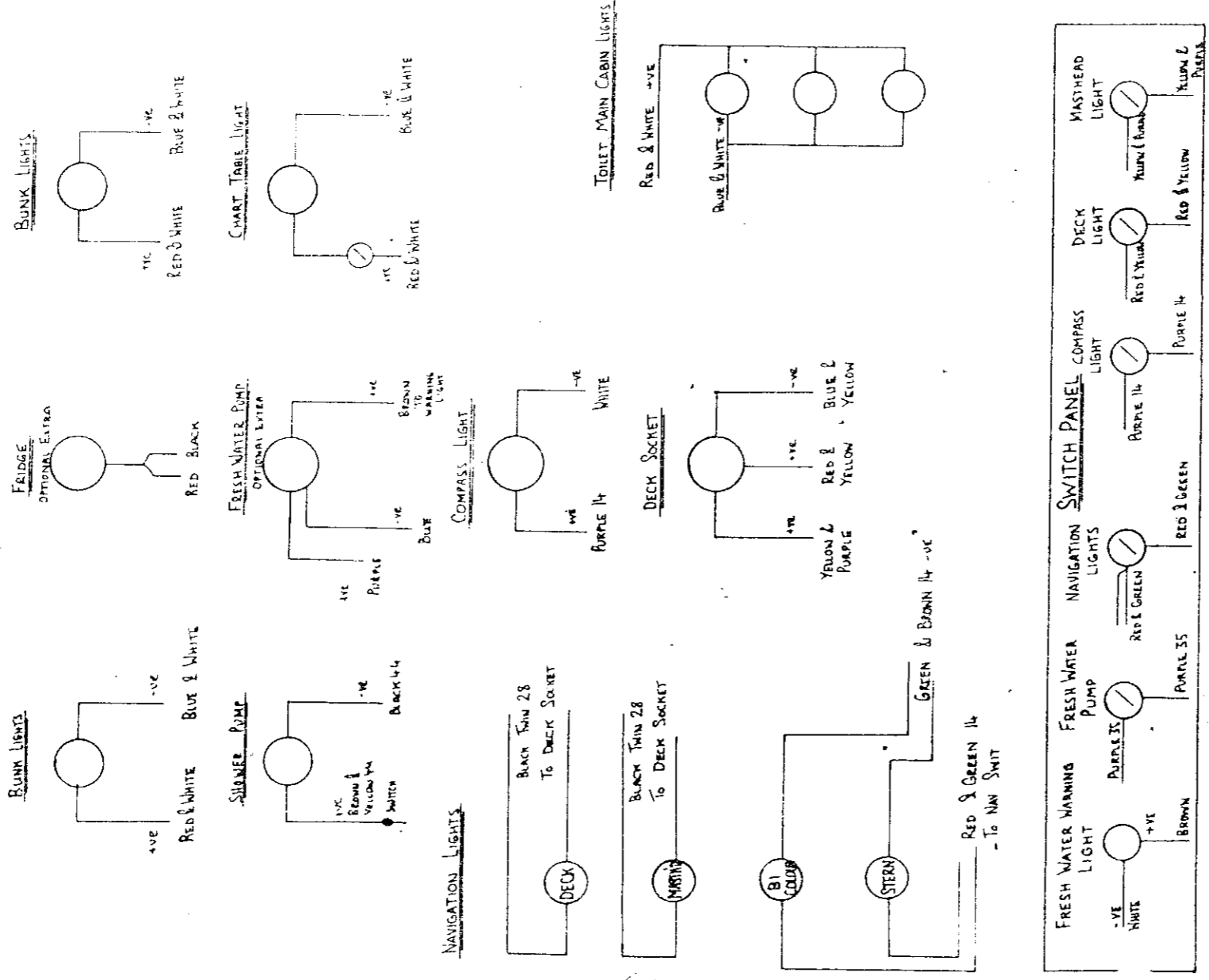


TOILET MAIN CABIN LIGHTS



8 AMP FUSE HOLDERS AUXILIARY CIRCUIT





Title MOODY 29

WIRING DIAGRAM

MARINE PROJECTS PLYMOUTH LTD.  
Newport Street, Plymouth. Telephone 27771

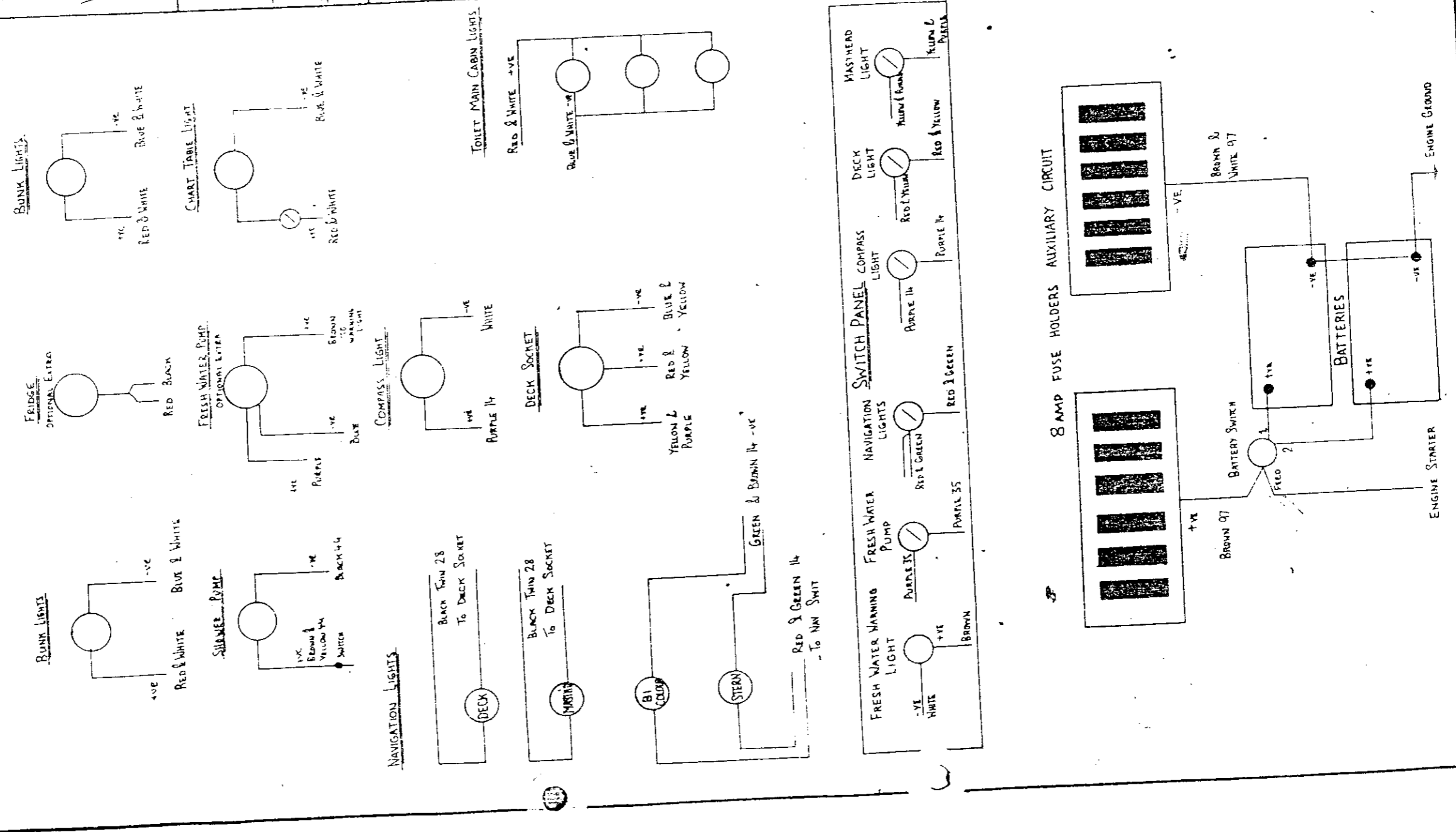
Material /

Drawn by P D H

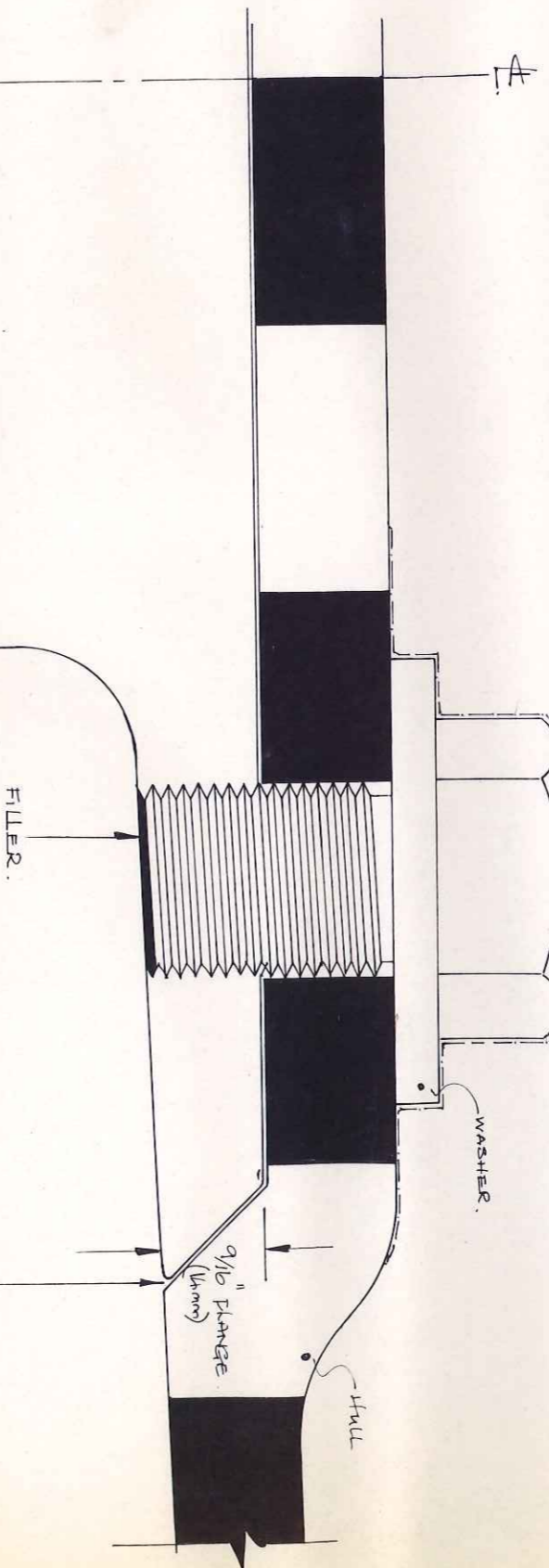
Date 13-11-80

Scale -

Drwg. No. M29-037



SECTION AA FULL SIZE  
 25 mm  $\varnothing$  MILD STEEL BOLTS (10 IN NUMBER)  
 2 1/2" sq x 1/4" MILD STEEL WASHERS (64 x 6 mm)  
 ONE COAT CLEAR RESIN OVER BOLTS

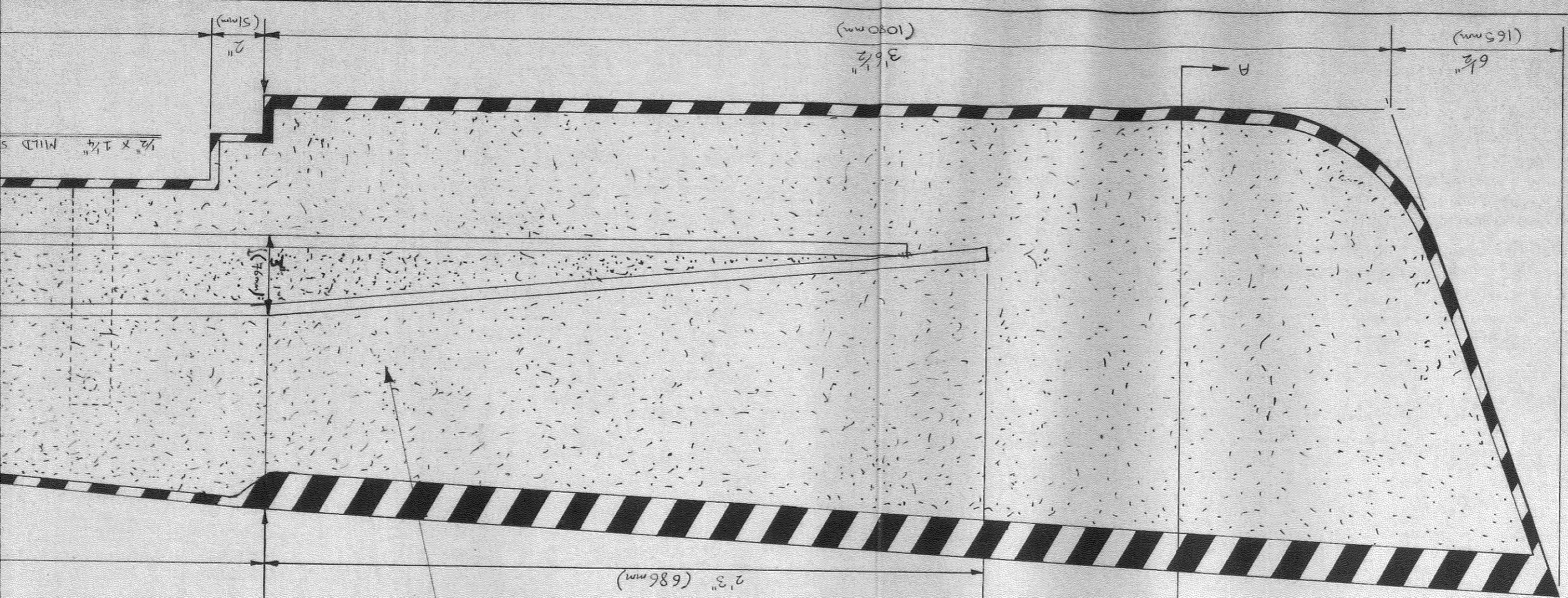


50/50 RUBBERSEAL O $\varnothing$  033 USED  
 BETWEEN HULL & KEEL.  
 CAULKING+ COTTON USED AROUND  
 BOLT THREADS.

**THIS DRAWING  
 IS NOT TO BE USED  
 FOR PRODUCTION  
 PURPOSES**

MARINE PROJECTS PLYMOUTH LTD 28.5.80  
 WOODY 29  
 KEEL BOLTING ARRANGEMENT: D/FST  
 SCALE 1"=12" D.N.º. M29-008

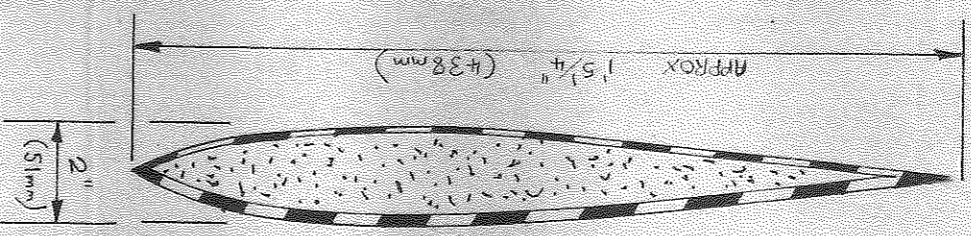




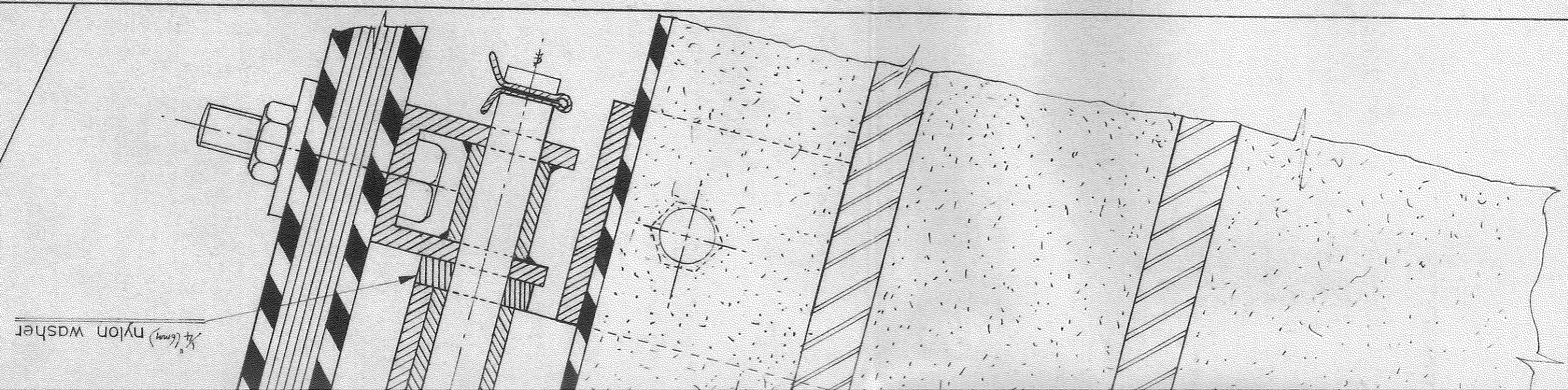
1' 3 1/2" (394 mm)

lightweight filler

2' 3" (686 mm)



1/4 FULL SIZE



1/4 (6mm) nylon washer

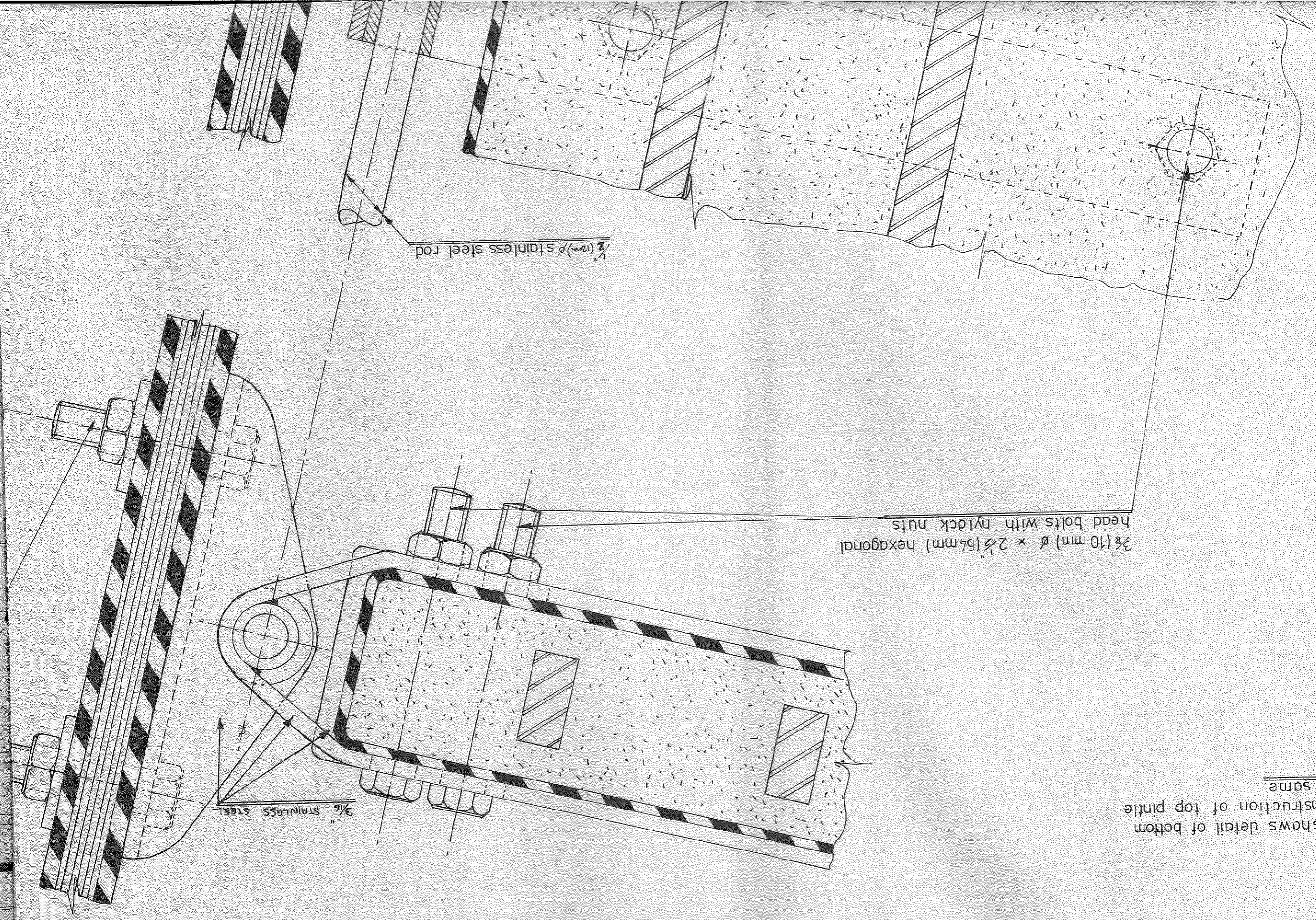
FULL SIZE

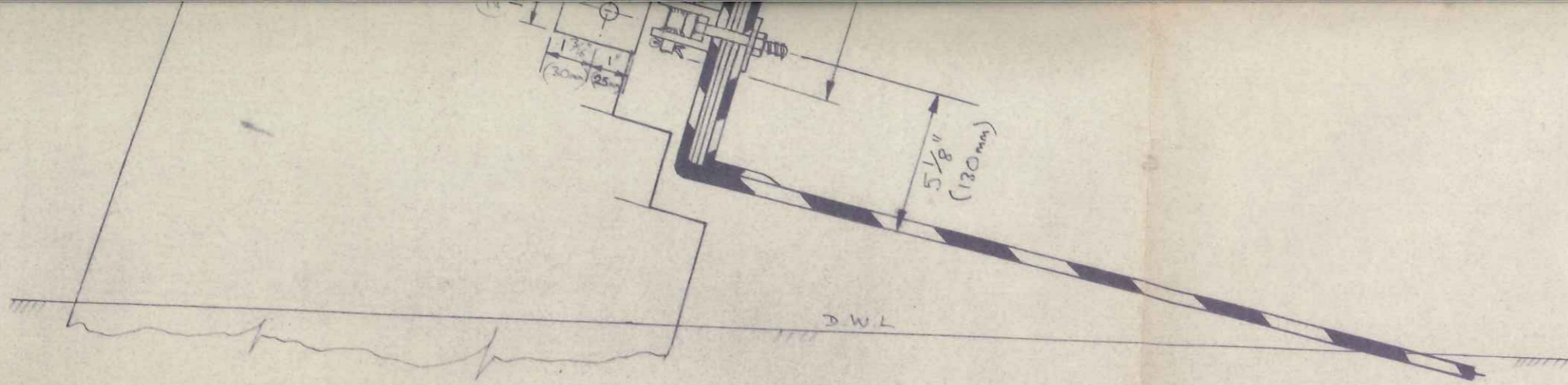
this drawing shows detail of bottom pintle only, construction of top pintle is exactly the same.

$\frac{3}{8}$ " (10 mm)  $\phi$  x  $2\frac{1}{2}$ " (64 mm) hexagonal head bolts with nylon nuts

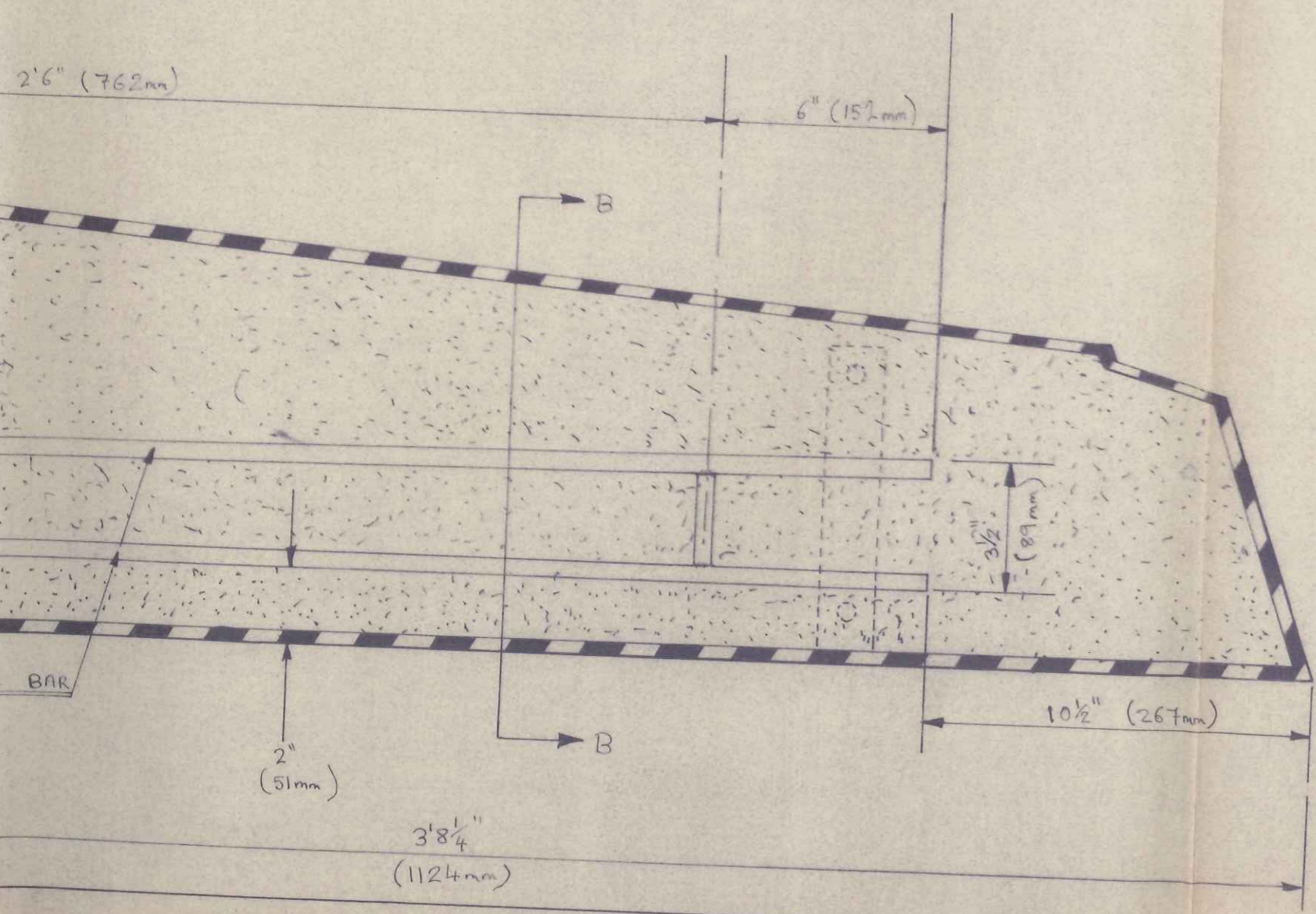
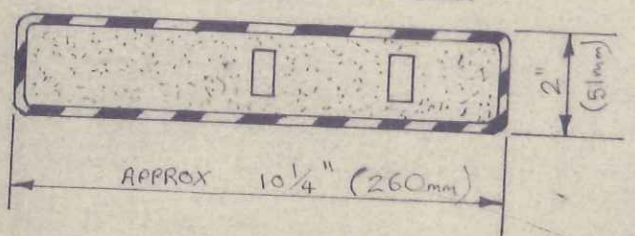
$\frac{1}{2}$ " (12.7 mm)  $\phi$  stainless steel rod

$\frac{3}{16}$ " STAINLESS STEEL





TYPICAL SECTION B-B



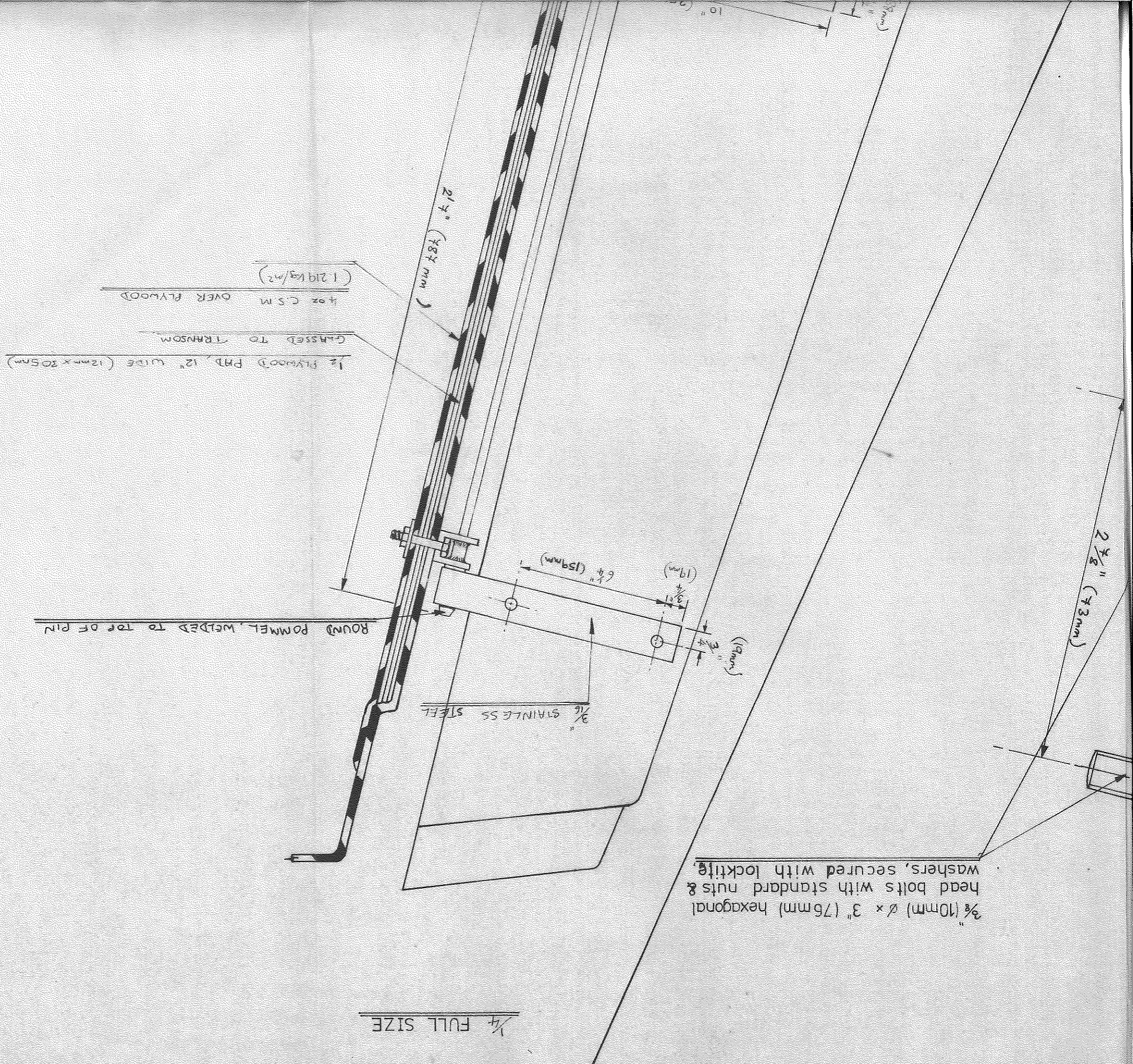
RUDDER LAYUP

1 x 1 1/2 oz CSM.	1 x 0.457 kg m <sup>2</sup>
3 x 2 oz CSM	3 x 0.609 kg m <sup>2</sup>
<u>7 1/2 oz total</u>	<u>2.284 kg m<sup>2</sup></u>

Rudder filled with Fillite & Resin (lightweight filler)

Marine Projects (plymouth) Ltd.  
 Moody 29, - Dr By P.D.Haden.  
 Rudder Construction & Fixing Details  
 Scale = 1/4 & full size  
 Drwg N<sup>o</sup> = M29-040 date = 27-1-81





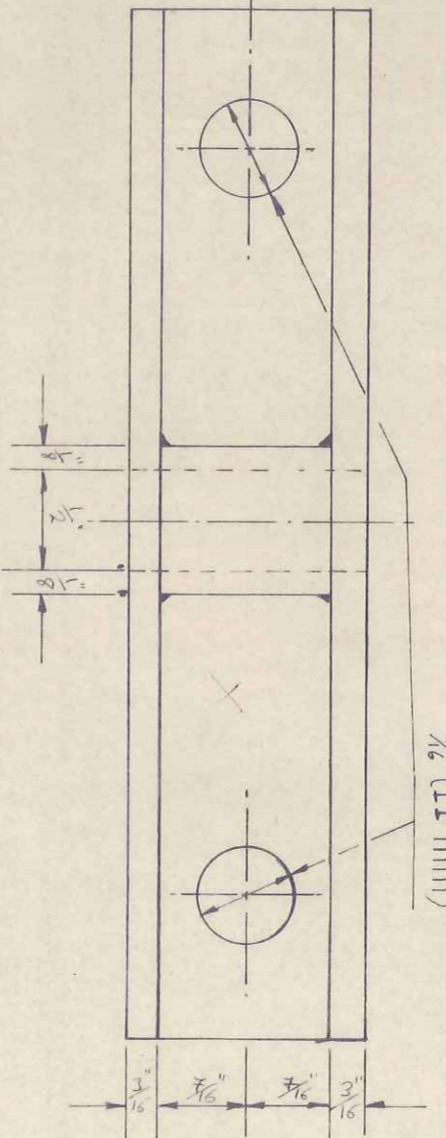
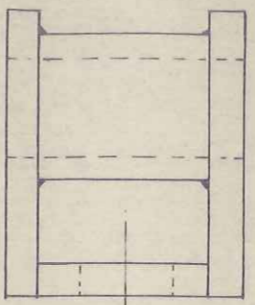
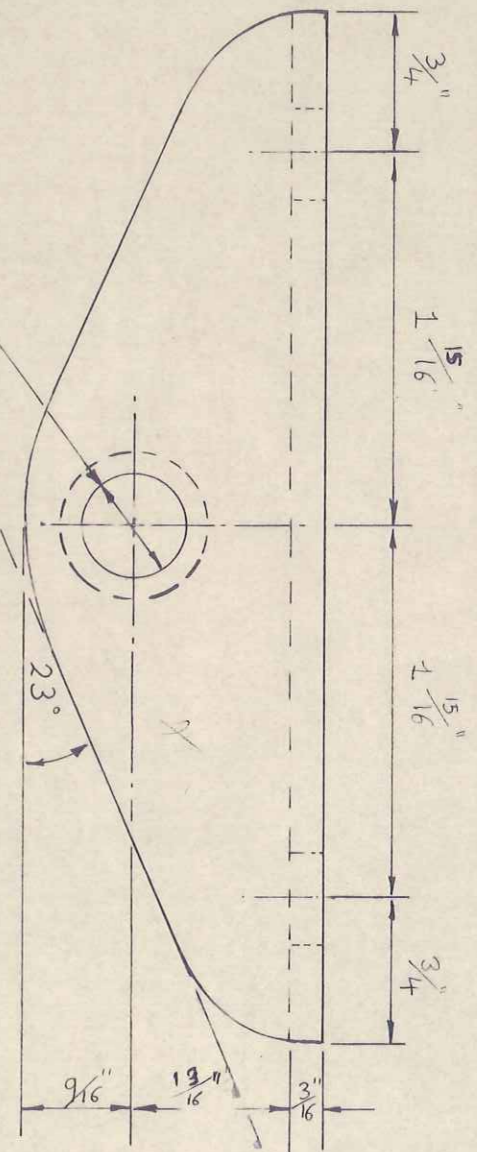
1/2 PLYWOOD PWD, 12" WIDE (12mm x 305mm)  
 GLUED TO TRUSS  
 4oz CSM OVER PLYWOOD  
 (1.219kg/m<sup>2</sup>)

3/8" (10mm)  $\phi$  x 3" (76mm) hexagonal  
 head bolts with standard nuts &  
 washers, secured with locktite.

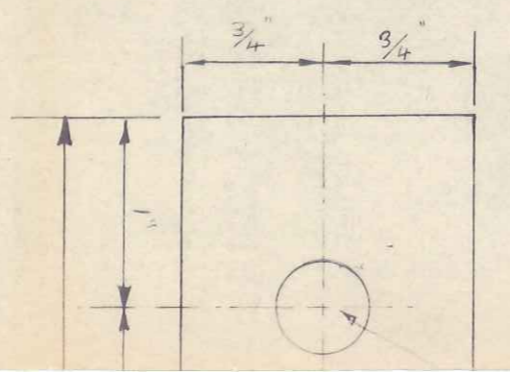
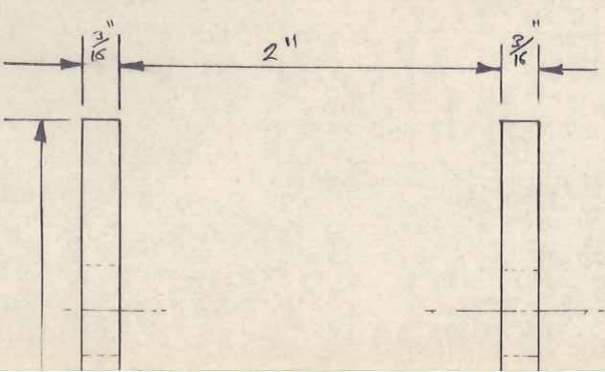
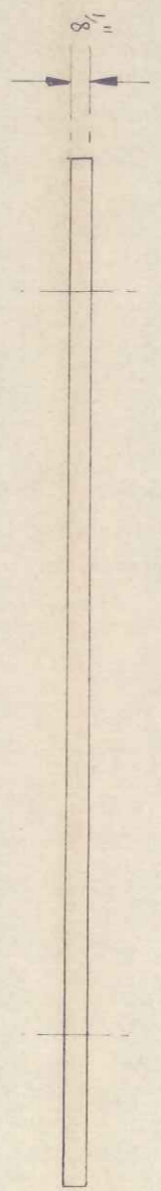
1/4 FULL SIZE

Transom gudgeon  
2 off per boat

OR DRILL TO GIVE  
12.5 mm  
(SMALL TOLERANCE TO 1/2" ROD)



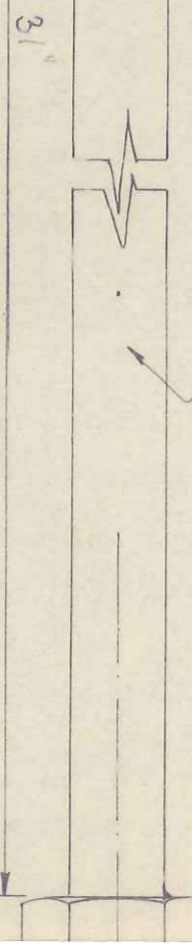
ALSO SUPPLY BACKING PLATE (S 3/8" x 1 1/4" x 1/8")



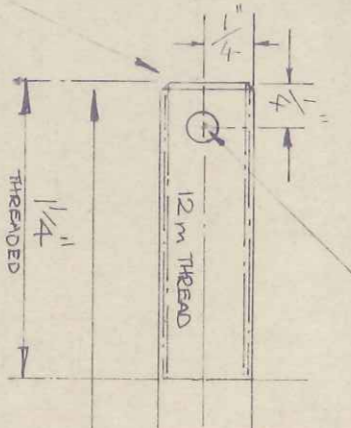
Pin  
1 off per boat

rod = 12mm Ø

M12 NUT. WELDED  
TO ROD.

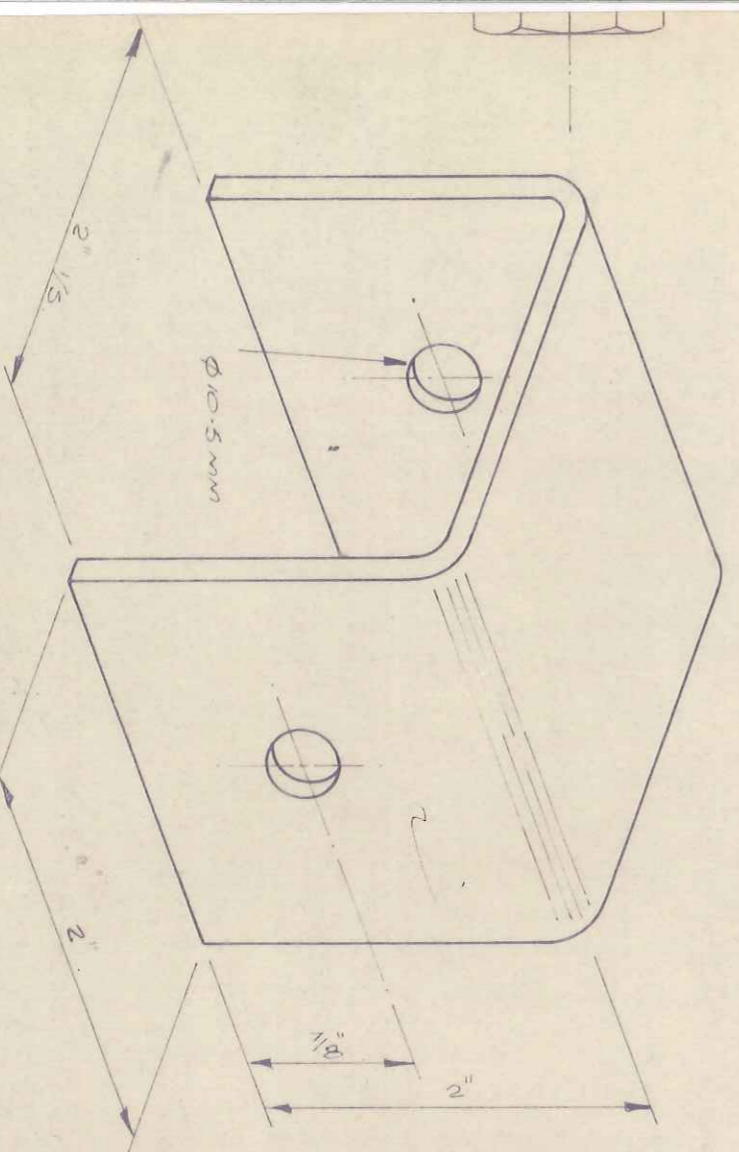
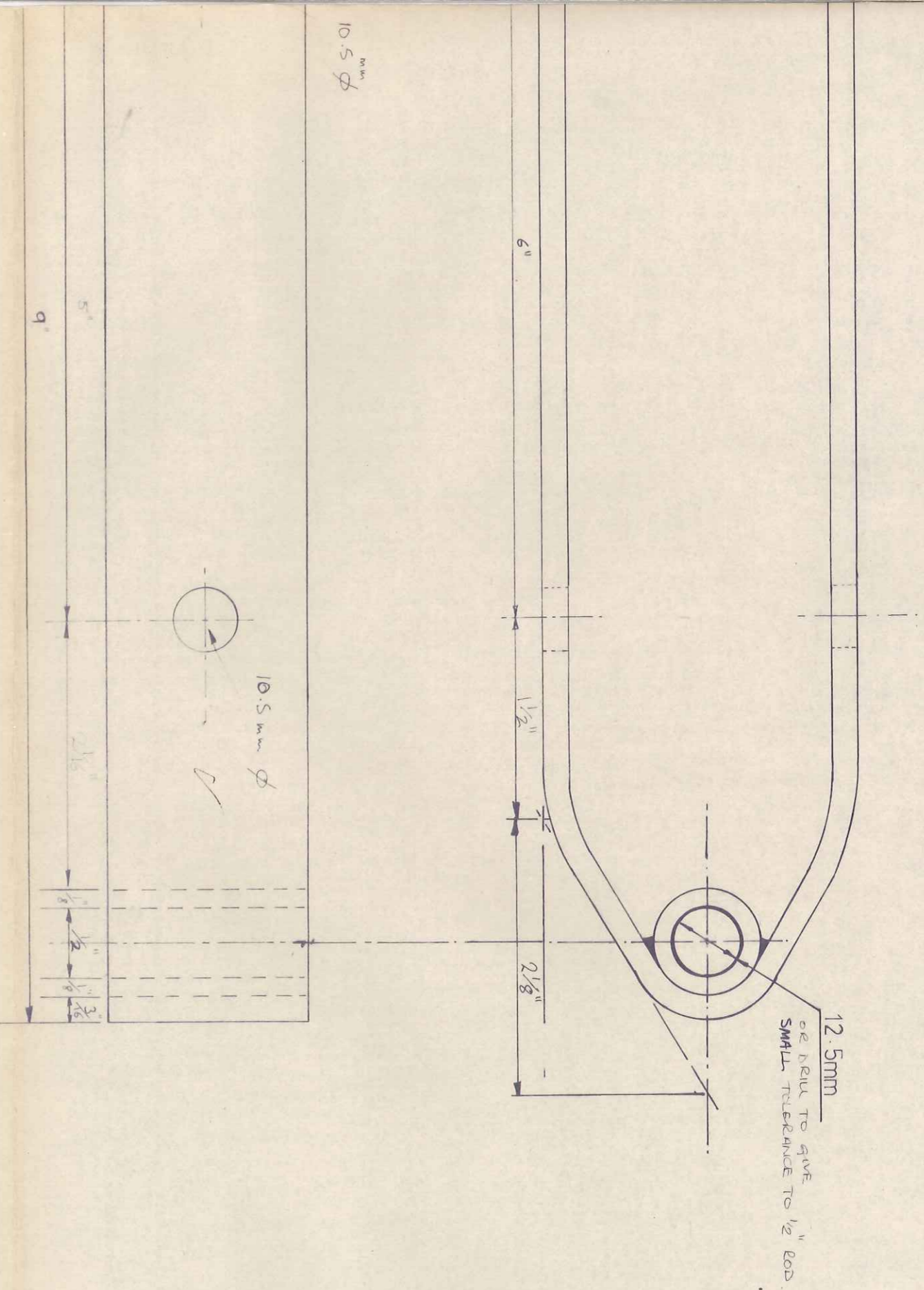


hole drilled to  
suit 3/8 split pin



slightly chamfered  
end

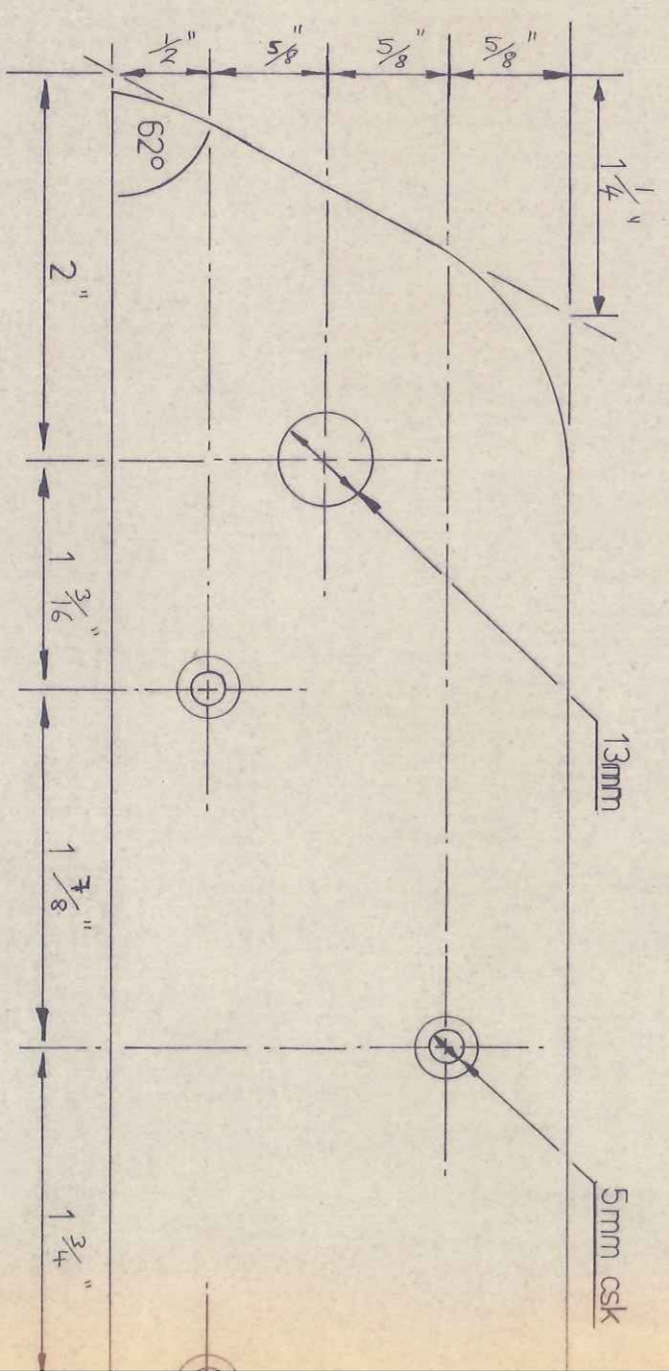
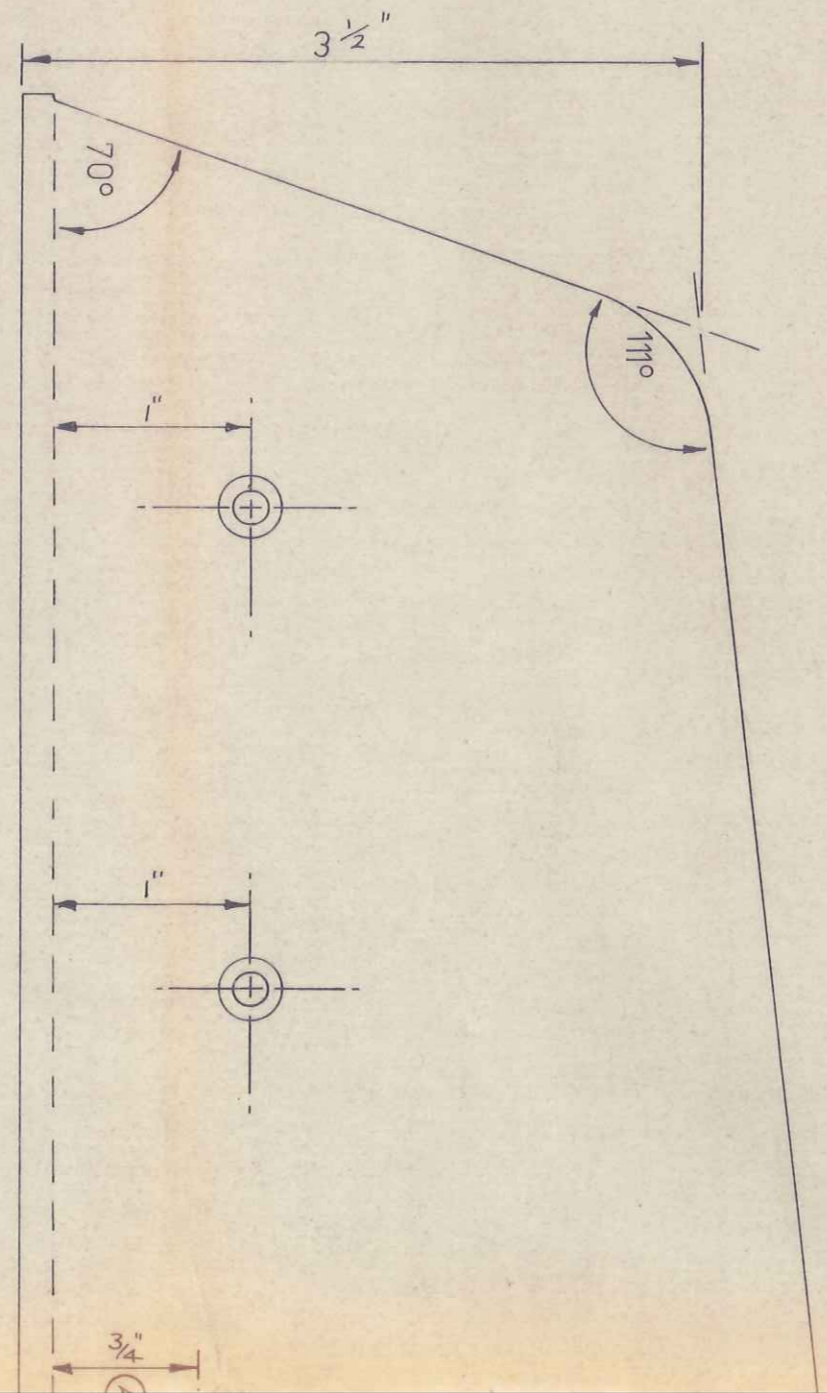
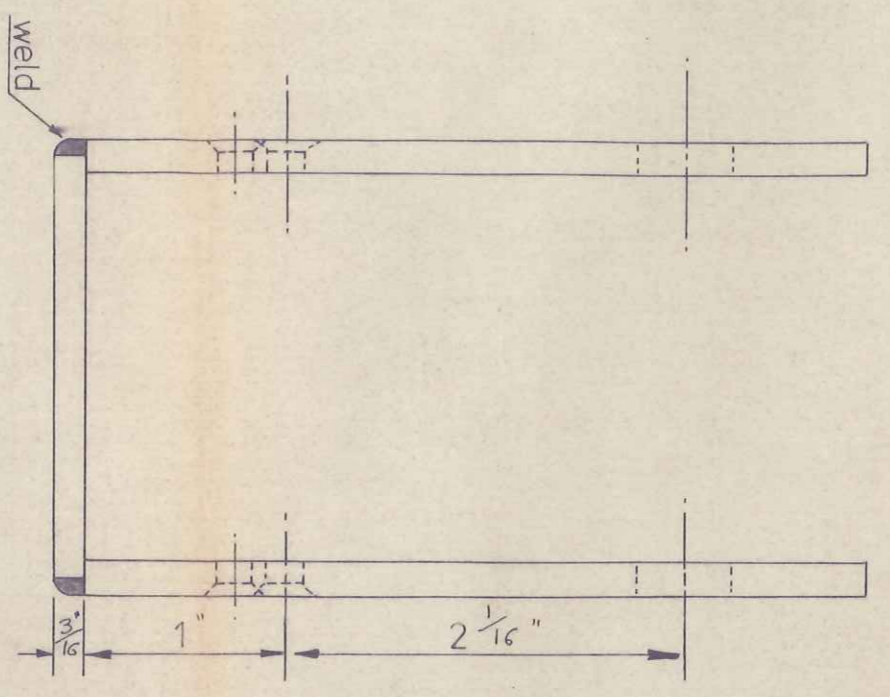
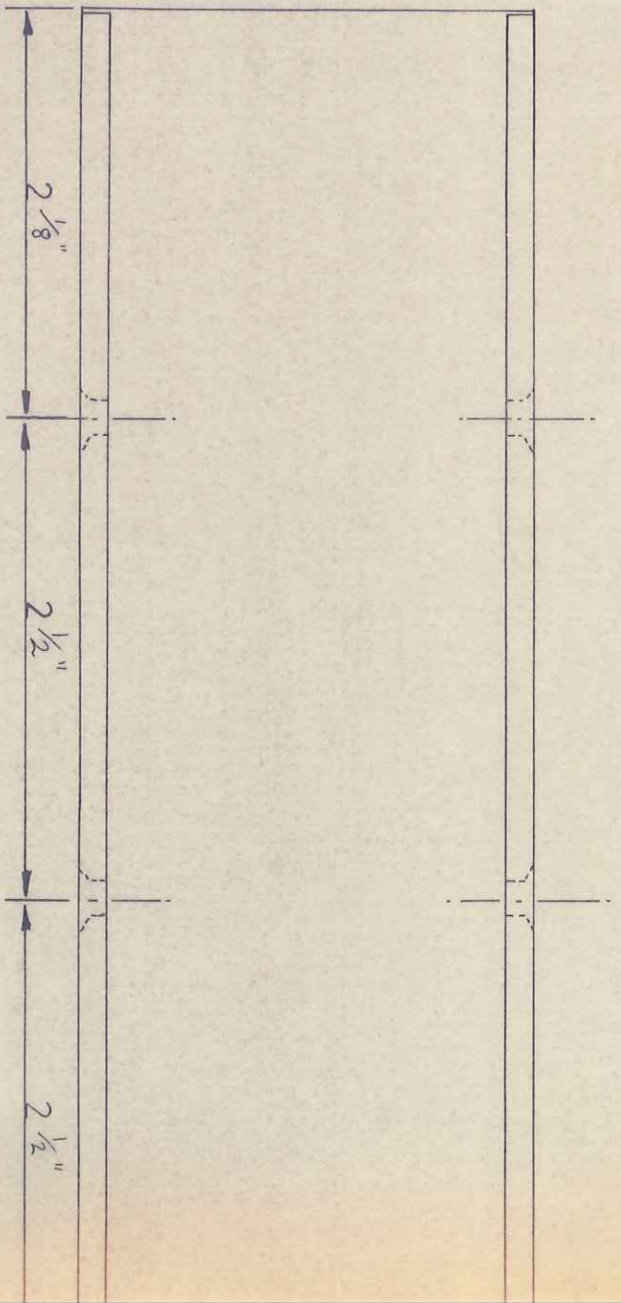
Rudder brace  
2 off per boat



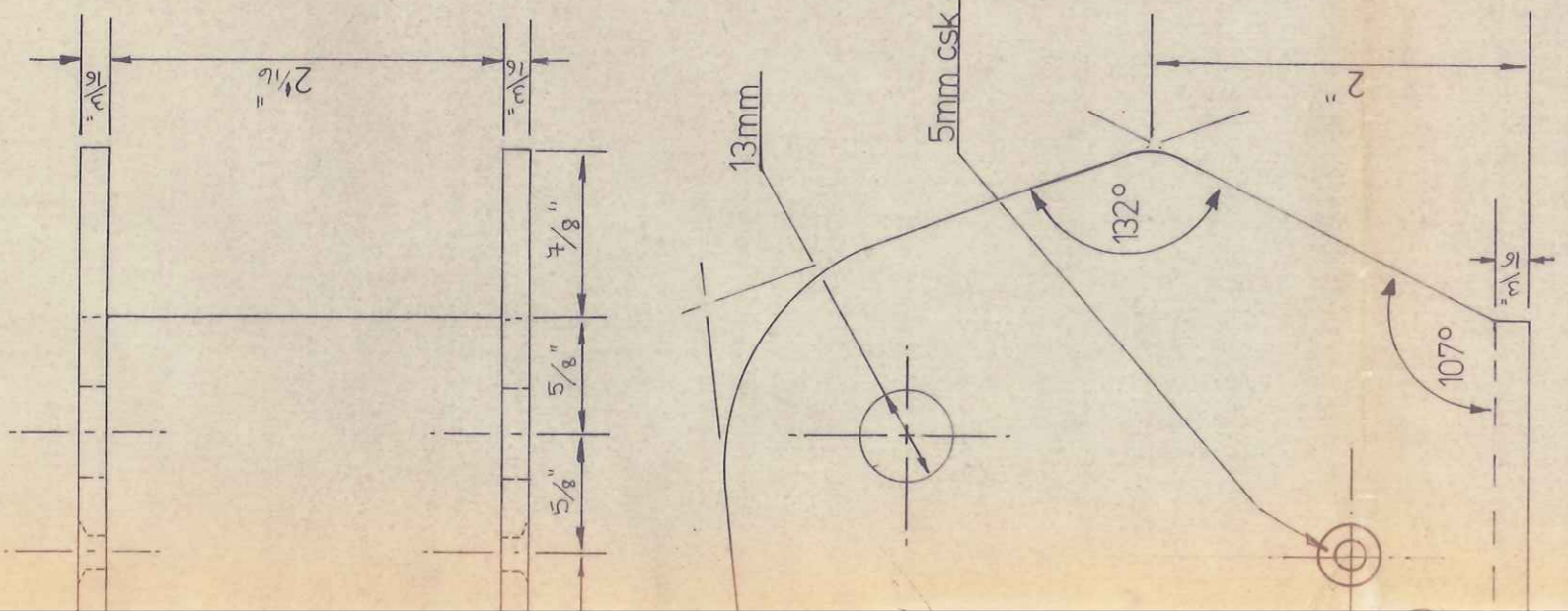
Rudder protective sheath  
1-off per boat

DATE	MODIFICATION
16.3.81	BACKING PLATE ADDED TO TRANSOM GUDGEON
16.3.81	RUDDER BRACE HOLE & CHANGED
14.5.81	BOTTOM 1/4" OF PIN TO BE THREADED (12mm)
21.9.81	PIN MODIFIED, RUDDER PROTECTOR ADDED.

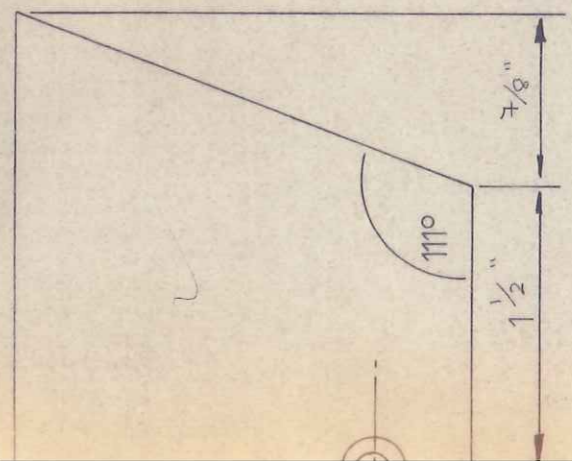
Marine Projects (plymouth) Ltd  
Moody 29 & M27 P.D.Haden  
Rudder Brace & Transom Gudgeon  
Stainless Steel 29-9-80.  
Scale = Full Size  
Drwg No = M 29-026



MATERIAL 3/16" PLATE



side panels = 2 off per set  
 polished & countersunk  
 opposite sides

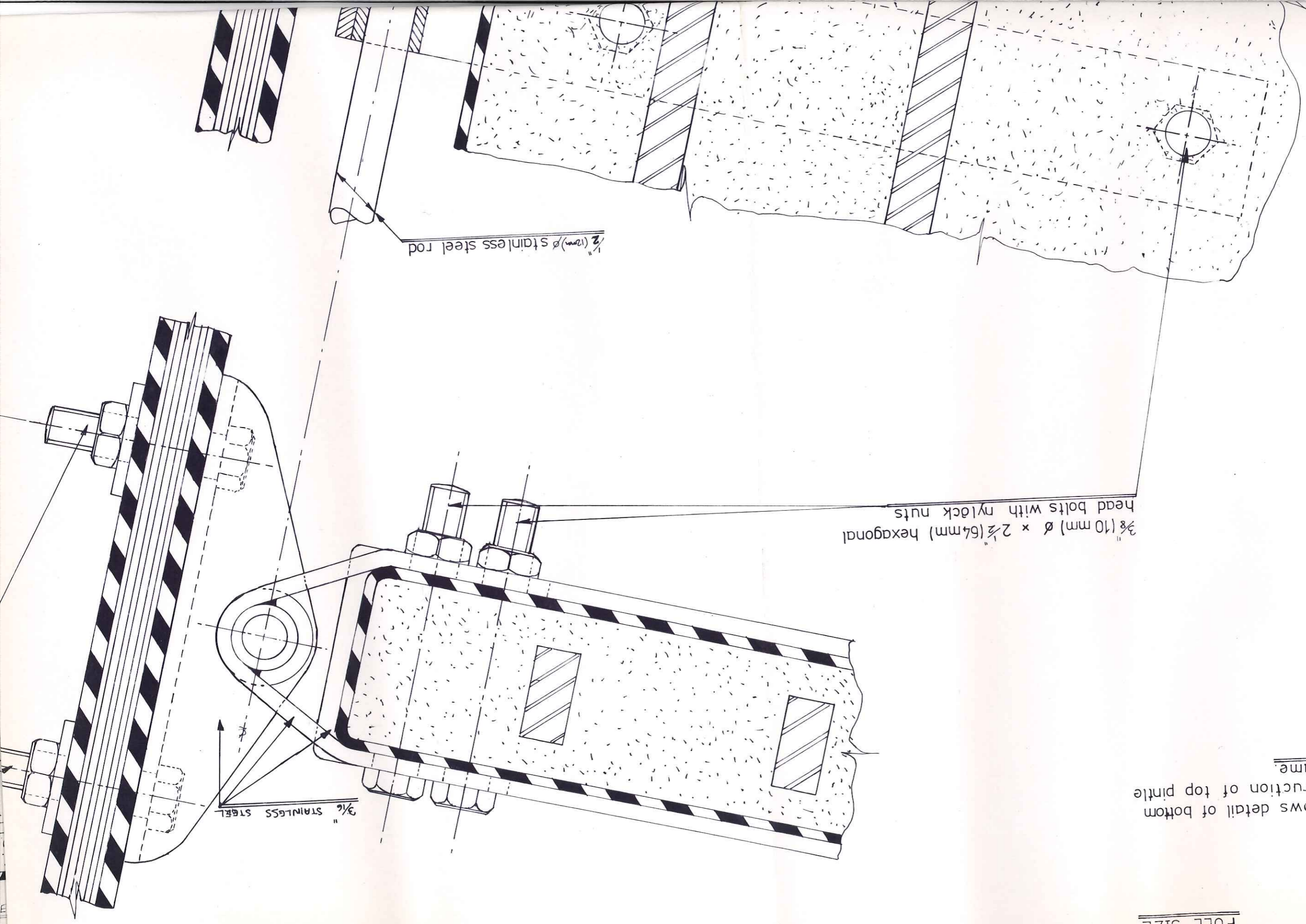


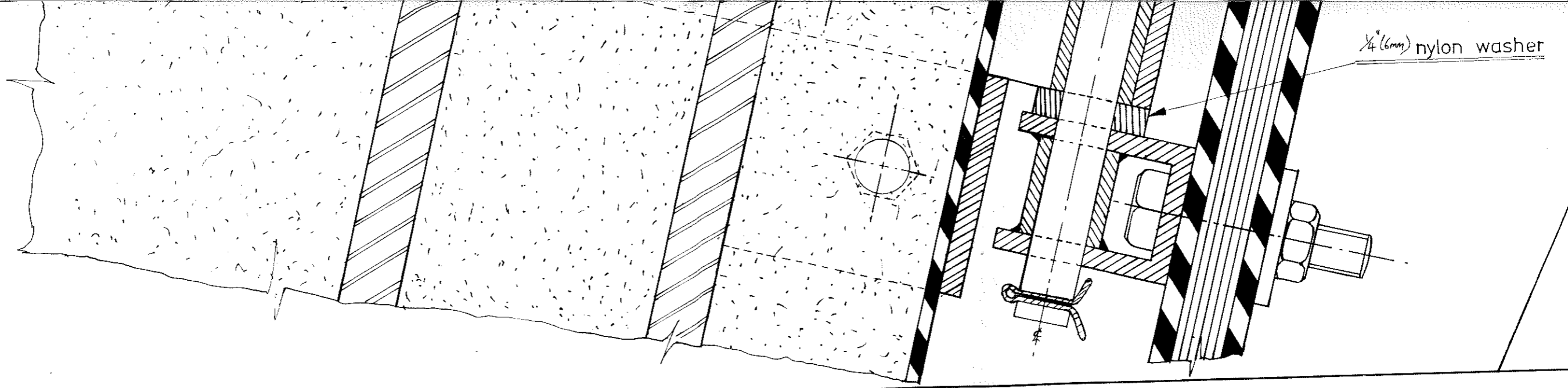
9.2.83	PAN	(A)	3/4" HEIGHT WAS 1"
DATE	SIG.		MODIFICATION

Marine Projects (plymouth) Ltd  
 Moody 29 Dr By P.D. Haden  
 Tiller Head & Side Panels  
 Stainless Steel 26-9-80  
 Scale = Full Size  
 Drwg N° = M 29-025

THIS DRAWING SHOWS DETAIL OF BOTTOM  
PINTLE ONLY, CONSTRUCTION OF TOP PINTLE  
IS EXACTLY THE SAME.

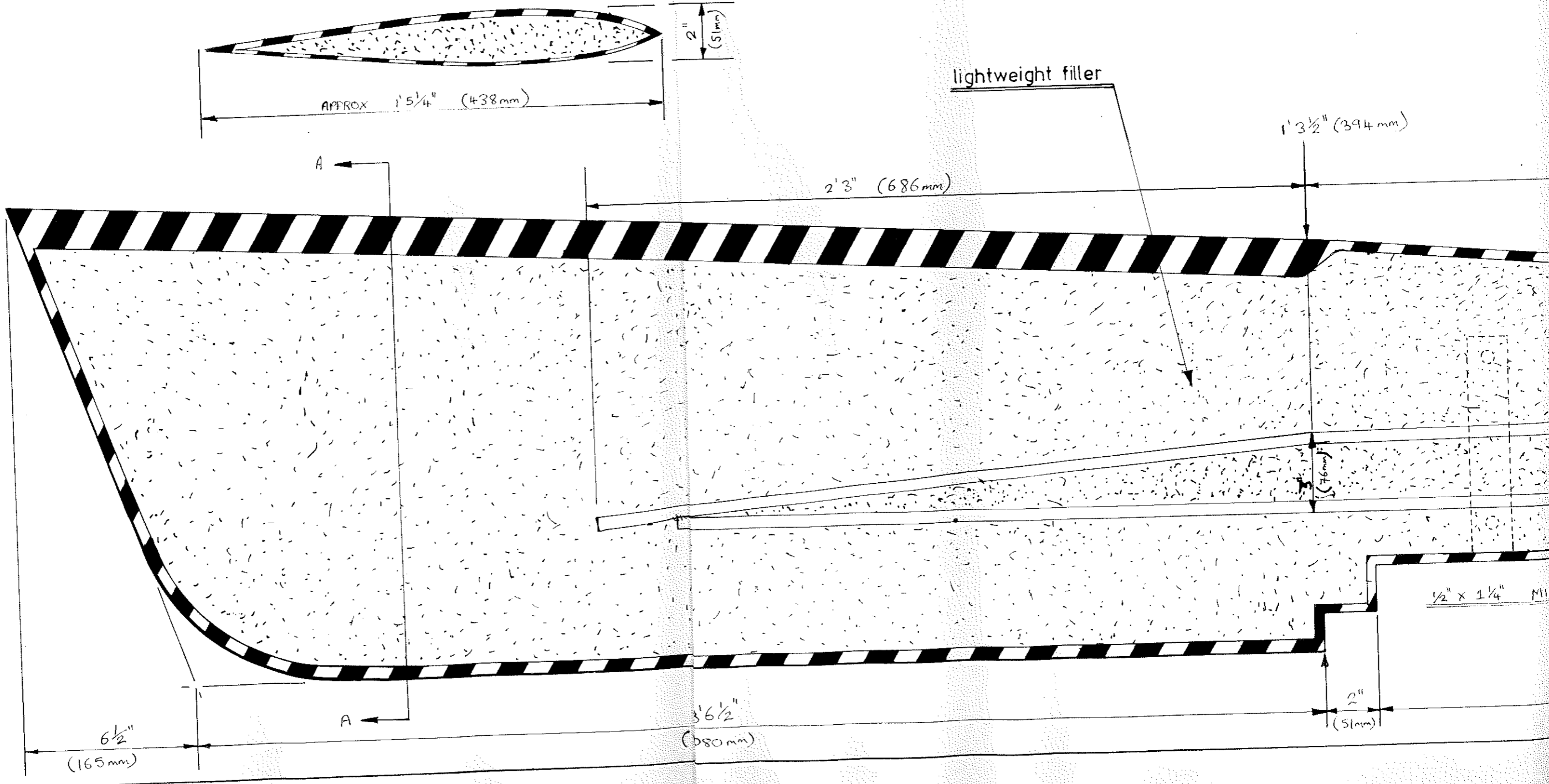
FULL SIZE



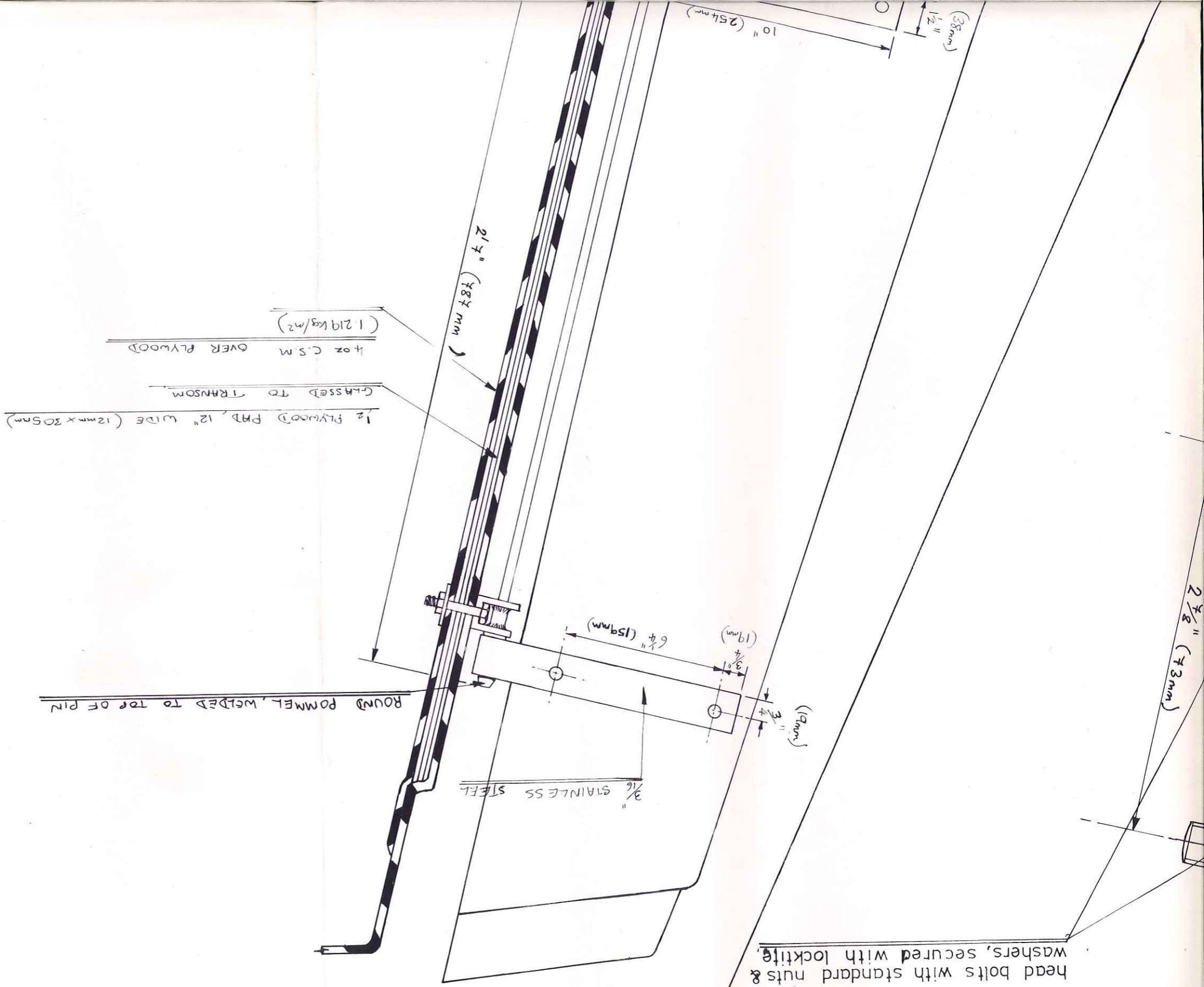


$\frac{1}{4}$  FULL SIZE

TYPICAL SECTION A-A



1/4 FULL SIZE



3/8" (10mm)  $\phi$  x 3" (76mm) hexagonal head bolts with standard nuts & washers, secured with locktite.

3/16" STAINLESS STEEL

ROUND POMMEL, WELDED TO TOP OF PIN

1/2 PLYWOOD FRP, 12" WIDE (12mm x 305mm)  
GLASSED TO TRANSOM  
4oz C.S.M OVER PLYWOOD  
(1.219 kg/m²)

2 1/2" (78.7 mm)

10" (254mm)  
1 1/2"  
(38mm)

2 1/8" (73mm)

(9mm)

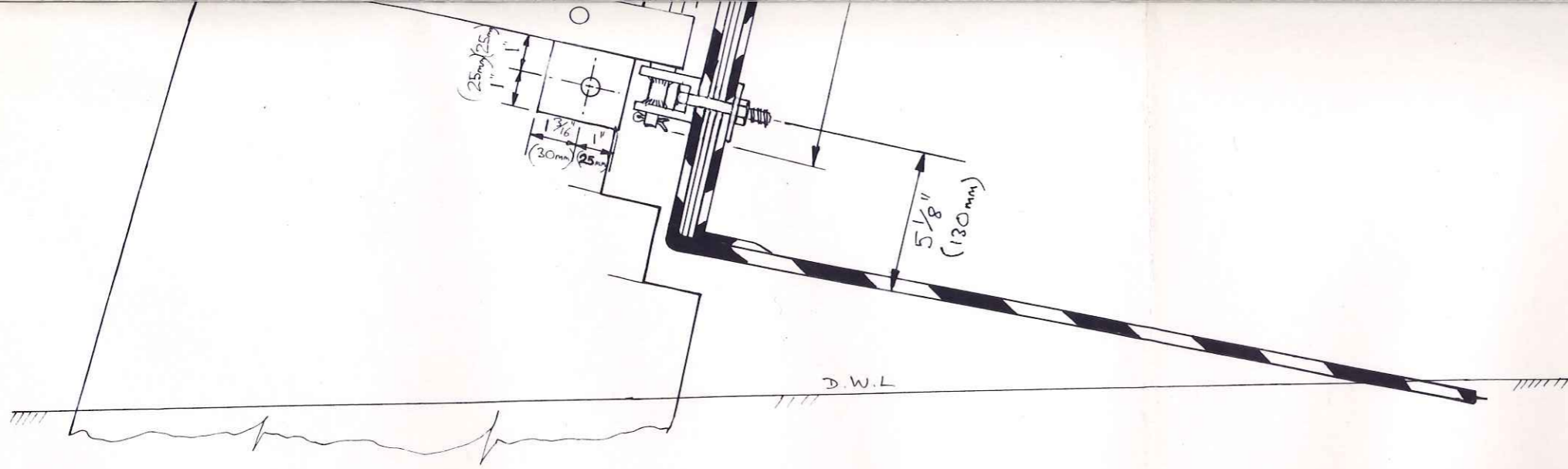
(19mm)

6 1/4" (159mm)

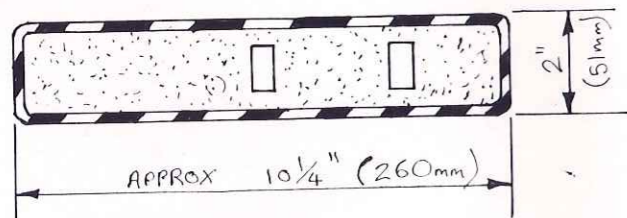
3/4"

3/4"





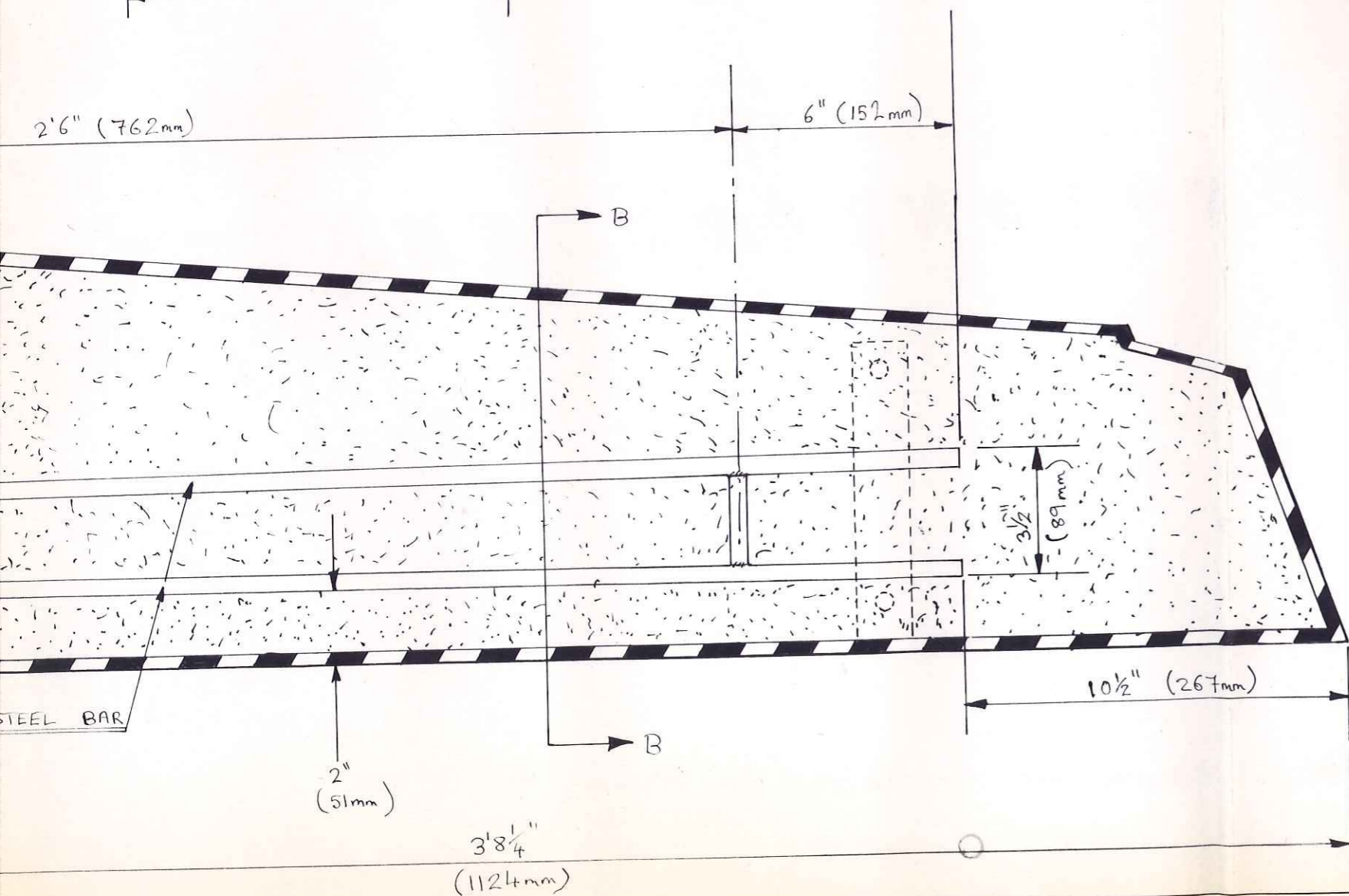
TYPICAL SECTION B-B



RUDDER LAYUP

1 x 1 1/2 oz CSM.	1 x 0.457 kg m <sup>2</sup>
3 x 2 oz CSM	3 x 0.609 kg m <sup>2</sup>
7 1/2 oz total	2.284 kg m <sup>2</sup>

Rudder filled with Fillite & Resin (lightweight filler)



**UNCONTROLLED**

ISSUED BY  
MARINE PROJECTS  
DRAWING OFFICE  
**30 JUN 1993**

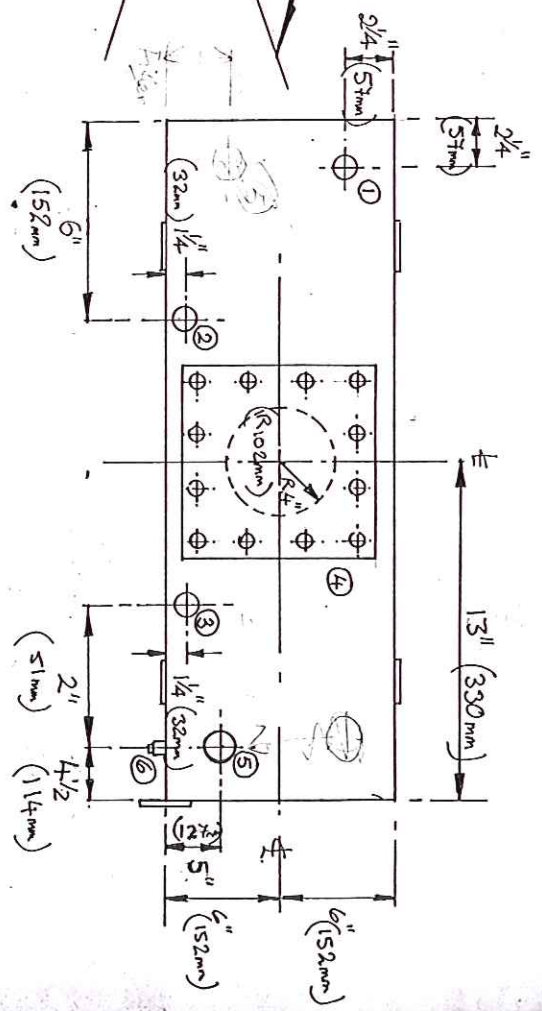
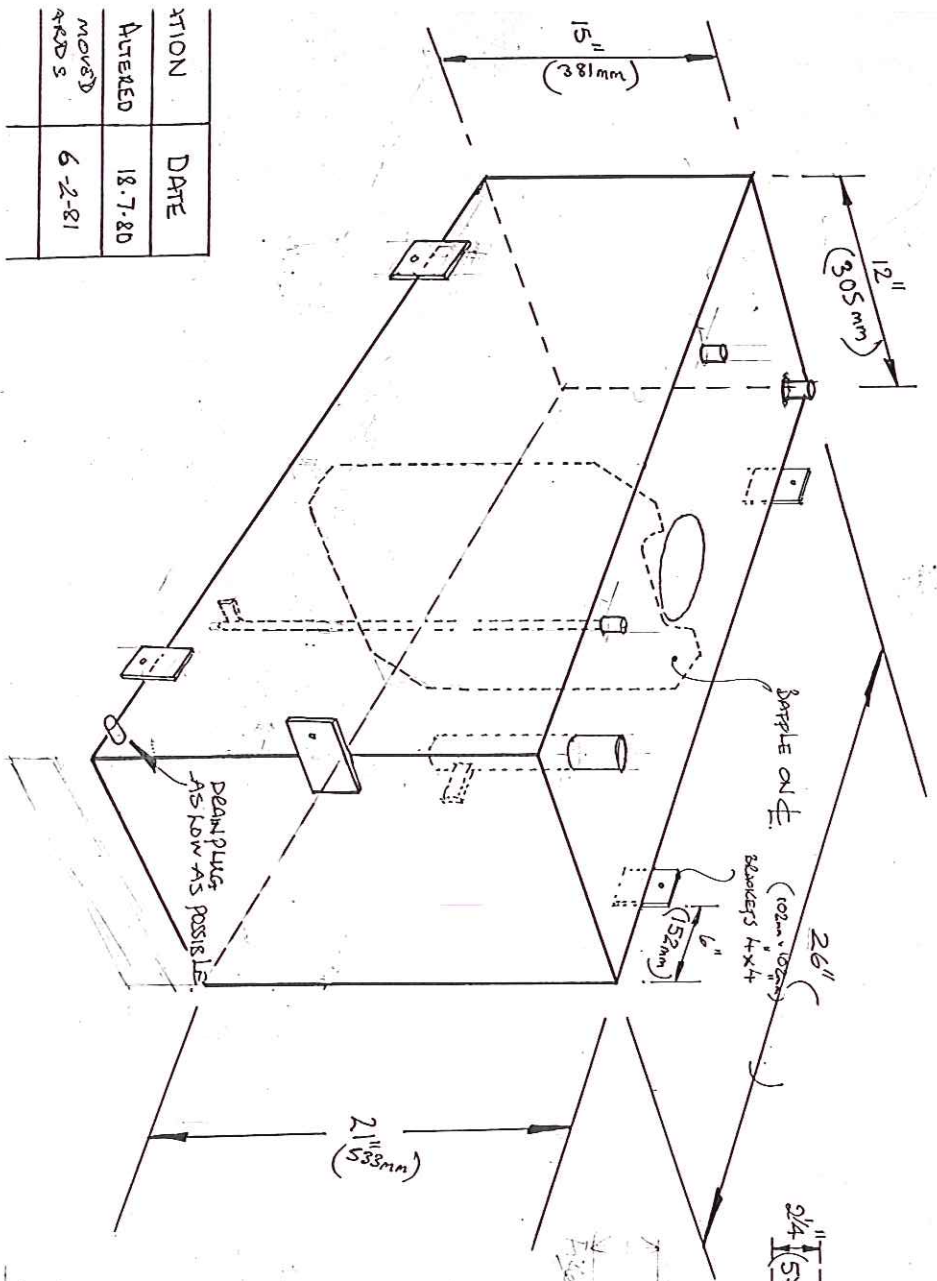
Marine Projects (plymouth) Ltd.  
Moody 29, Dr By P.D.Haden.  
Rudder Construction & Fixing Details  
Scale = 1/4 & full size  
Drwg N<sup>o</sup> = M29-040 date = 27-1-81

GODY 29 FUEL TANK.

CAPACITY 20 GALLONS (90 litres).

Drawn by ES Date 6-6-80 Scale NOT TO SCALE Drwg. No M29-013

MARINE PROJECTS PLYMOUTH LTD.  
Newport Street, Plymouth. Telephone 27771



Breather

1. BREATHER  $\frac{7}{16}$ " BSP x 1" HIGH.
2. RETURN  $\frac{3}{8}$ " BSP x 1" HIGH
3. SUCTION  $\frac{3}{8}$ " BSP. STRAIGHT - FEMALE 1" HIGH / WITH  $\frac{7}{16}$ " I.D. DOWNPIPE AND SPACER / BEARD WELDED NEAR TO BOTTOM OF PIPE AND SIDE OF TANK. STOP DOWNPIPE  $\frac{3}{4}$ " FROM BOTTOM OF TANK.
4. INSPECTION HATCH 8"  $\phi$  HOLE IN TANK. 10 1/2" x 10 1/2" x 3/16" HATCH COVER. 12 x 13/32  $\phi$  HOLES DRILLED THROUGH HATCH & TANK TOP. 5/4" FROM EDGE OF HATCH @ 3" CENTRES. 1" x 3/8" BOLTS FITTED THREADS UPWARDS HEADS WELDED TO UNDERSIDE OF TANK TOP. INCLUDE 10 1/2" x 10 1/2" RUBBER GASKET BETWEEN HATCH COVER & TANK. 1/4" BSP 3" HIGH ON TANK WITH 6" DOWNPIPE AND SPACER BEARD WELDED NEAR TO BOTTOM OF DOWNPIPE.
5. FUEL FILLER 1/4" BSP 3" HIGH ON TANK WITH 6" DOWNPIPE AND SPACER BEARD WELDED NEAR TO BOTTOM OF DOWNPIPE.

ACTION	DATE
ENTERED	18.7.80
MOVED	6-2-81
AKDS	

TEST TANKS TO GIBS P.S.1.  
CLEAN - ONE COAT PRIMER - ONE COAT BLUE GLASS.

(2.25kg for 25mm<sup>2</sup>)

ATN DAVE EDWARDS

DIMENSIONS SHOULD BE CHECKED AGAINST EXISTING TANK.

10 1/2" = 267mm, 3/16" = 5mm, 13/32" = 10.5mm, 3/4" = 19mm, 1 1/4" = 32mm, 6" = 152mm  
 12" = 305mm, 3/8" = 10mm, 7/16" = 11mm, 1" = 25mm, 3" = 76mm, 8" = 203mm

19/02/01