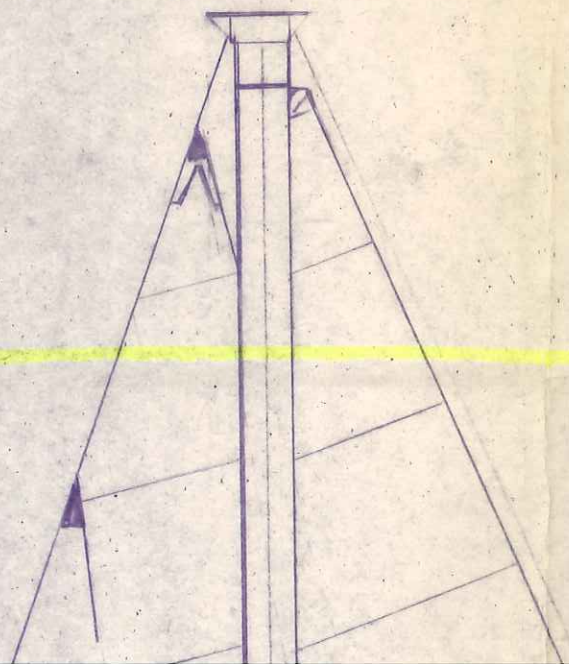


A2

ALS	RIGGING SCREW	TOGGLE
ED OTH	LEWTHAR TOGGLE CAT No 498	LEWTHAR CAT No 498
	3/16" BRONZE LEWTHAR CAT No 497	"
	"	"
	"	"

MASTHEAD FITTING

TANGS FOR FORESTAY BACKSTAY AND ONE SHROUD EACH SIDE
 INTERNAL HALLIARDS FOR MAIN AND JIB
 CRANE FOR OPTIONAL EXTERNAL SPIN HALLIARD. OFFSET TO STB
 BLOCK FOR BURGEE HALLIARD
 EXTERNAL TOPPING LIFT



SAIL	REF No.	
MAINSAIL	-	30'
GENDA	1	35'
INTERMEDIATE GENDA	2	35'
WORKING JIB	3	32'
INTERMEDIATE JIB	4	27'
STORM JIB	5	22'

BLE THROUGH
773)

B2

I = 35.7
 J = 12.5
 P = 30.0
 E = 11.75

A3

~ SAIL LEGEND ~

LUFF	LEACH	FOOT	AREA	REMARKS
0"	—	11'-9"	176 FT ²	HEADBOARD & BATTENS TO I.O.R.
9.14M		3.58M	16.4 M ²	LUFF ~ NYLON SLIDES FOOT ~ ROPE GROOVE
6"	34'-0"	20'-1"	350 FT ²	WIRE LUFF. PISTON HANKS.
10.82M	10.36M	6.13M	325 M ²	S. STEEL D-RING IN CLEW
6"	31'-6"	16'-9"	266 FT ²	DITTO
10.82M	9.60M	5.11M	24.7 M ²	
"	26'-3"	14'-0"	184 FT ²	AS FOR HOODY 33
9.75M	8.00M	4.27M	17.1 M ²	DITTO 3'-9" HEAD PENNANT
"	21'-3"	11'-6"	114 FT ²	DITTO 8'-0" HEAD PENNANT
8.38M	6.48M	3.51M	10.6 M ²	
"	16'-0"	10'-0"	73 FT ²	DITTO
6.10M	4.42M	2.80M	5.57 M ²	20" TACK PENNANT 13'-9" HEAD PENNANT

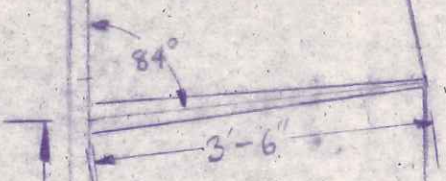
5 FT }
 FT } 224 FT²
 FT }
 FT } 176 FT²
 FT }
 400

B3

MAST HEEL DETAIL

SCALE 1/2 1" = 1'

B



C1

ITEM	MATERIAL	LENGTH	REMARKS
MAIN HALLIARD	5/8" CIRC. 6X19 S.S.	44'-0"	TALURIT EYE & S. STEEL THIMBLE S. STEEL D SHACKLE WIRE SPLICED TO ROPE
	1/4" CIRC 3-STRAND TERYLENE	32'-0"	
JIB HALLIARD	5/8" CIRC 6X19 S.S.	44'-6"	TALURIT EYE & S. STEEL THIMBLE SNAP SHACKLE (GIBB CAT NO.) WIRE SPLICED TO ROPE
	1/4" CIRC 3-STRAND TERYLENE	37'-0"	
TOPPING LIFT	1/4" CIRC 3-STRAND TERYLENE	70'-0"	SNAP SHACKLE GIBB CAT NO. EYE & THIMBLE AT BOOM
OPTIONAL SPI. HALLIARD	1/4" CIRC. 3-STRAND TERYLENE	74'-0"	SNAP SHACKLE GIBB CAT NO. EYE & THIMBLE AT ONE END
MAIN SHEET	1/4" CIRC TERYLENE BRAIDED ROPE	54'-0"	S-STEEL D SHACKLE TO BE USED AT ONE END. FOR BLOCKS ETC. SEE DRAWING
JIB SHEET (2-OFF)	1/4" CIRC TERYLENE BRAIDED ROPE	35'-0"	
TACK PENNANT	1/4" CIRC. TERYLENE 3-STRAND	6'-0"	LOFF TENSION TO BE AT HALLIARD LATCH
OPTIONAL SPI SHEETS (2-OFF)	1" CIRC. TERYLENE BRAIDED ROPE	40'-0"	SNAP SHACKLE GIBB CAT NO. EYE & THIMBLE AT ONE END
OPTIONAL SPINNER TOPPING LIFT	1/4" CIRC. TERYLENE 3-STRAND	37'-0"	SNAP SHACKLE GIBB CAT NO. EYE & THIMBLE AT ONE END

BLE THROUGH
773)

N° 778 TO
END

N° 771 TO
END

YE 2 THUMB

G N° S/385/8

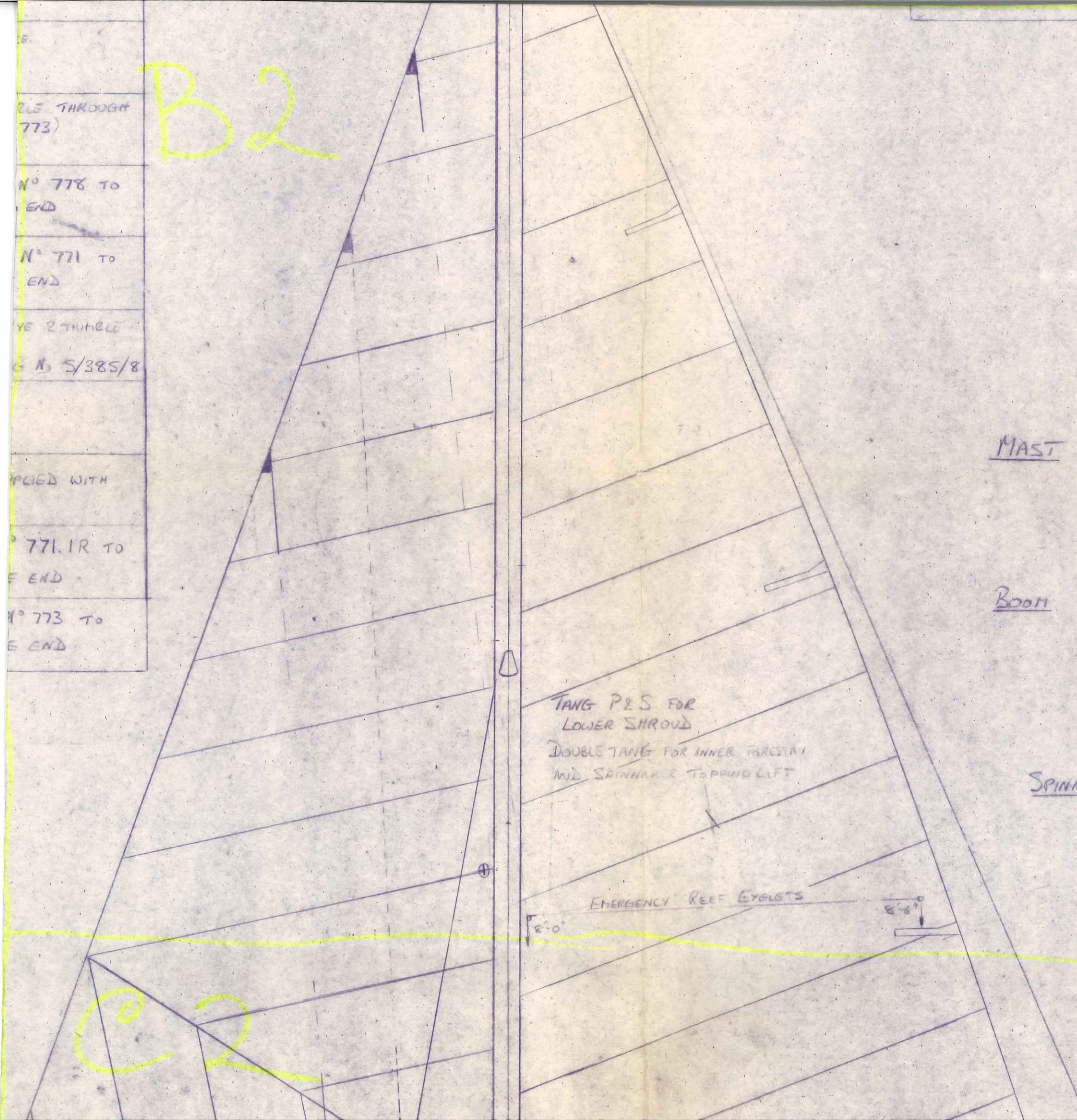
PIED WITH

N° 771.1R TO
END

N° 773 TO
END

B2

C2



I = 35.7
 J = 12.5
 P = 30.0
 E = 11.75

~ SPAR S

MAST

SPARLIGHT
 OR PROCTOR
 GOLD ANOD
 DECK STEP

BOOM

SPARLIGHT
 OR PROCTOR
 GOLD ANOD
 INTERNAL
 CLAM CLEAN

SPINNAKER BOOM (OPTIONAL)

1-OFF 12

5 FT }
 FT } 224 FT²
 FT }
 FT } 176 FT²
 400

B3

MAST HEEL DETAIL

SCALE 1/2" = 1'

REQUIREMENTS

DQ 9E
 7047
 SMOOTH, SOUND DEADENED,
 FLAT HEEL

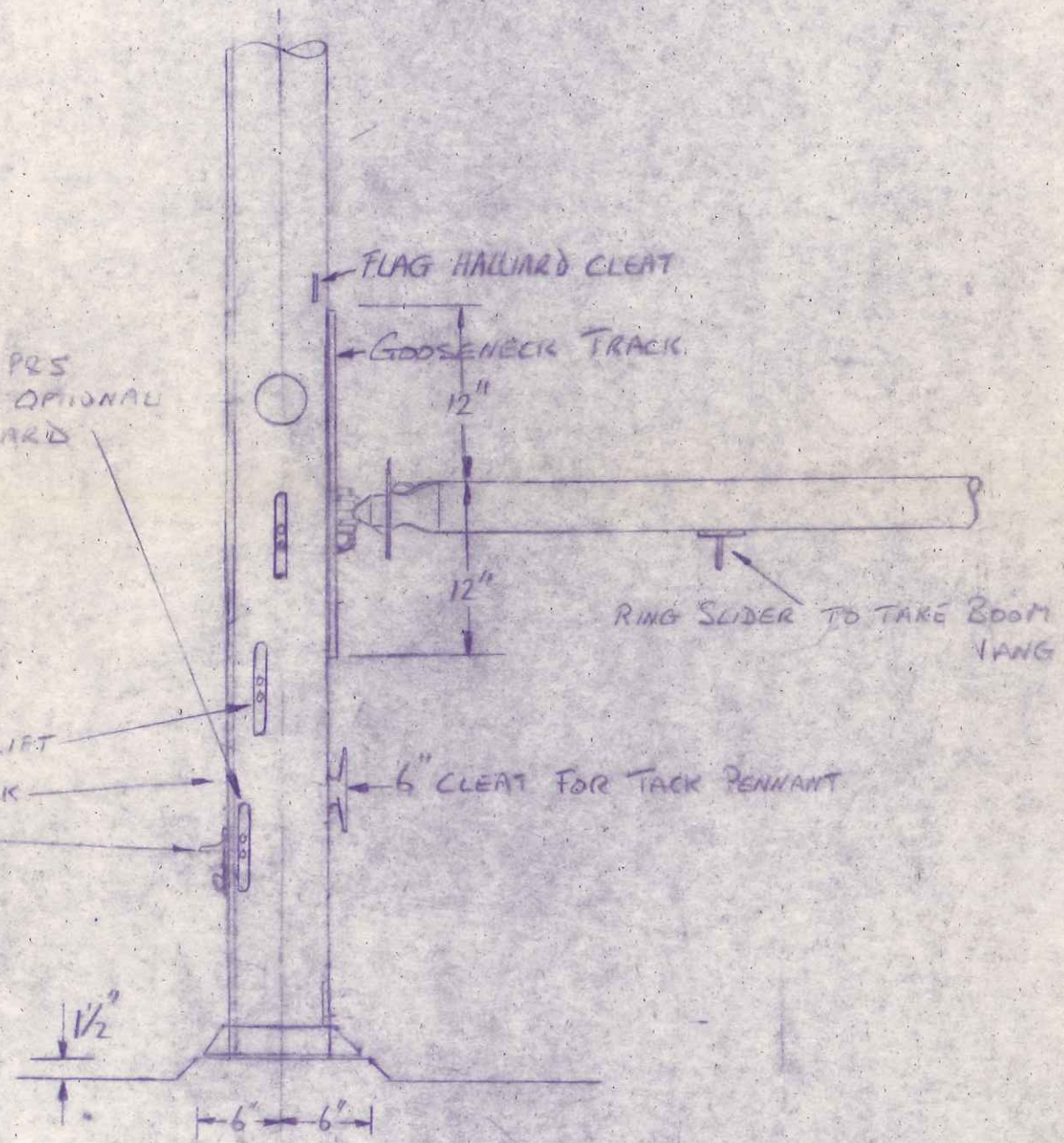
DQ 3 1/2 TYPE 3 ROLLER REEFING
 RE 4"

DISK, ROLLER REEFING
 CLEW OUTHAUL PURCHASE TO
 FIT AT FLJD END

1/2" PLUNGER TYPE FITTINGS BOTH ENDS

6" CLEAR FOR
 TOPPING LIFT & OPTIONAL
 SPI HALLIARD

OPTIONAL
 6" CLEAR FOR SPI T₁ LIFT
 7'-0" Q SPINNAKER TRACK
 AND RING SLIDER

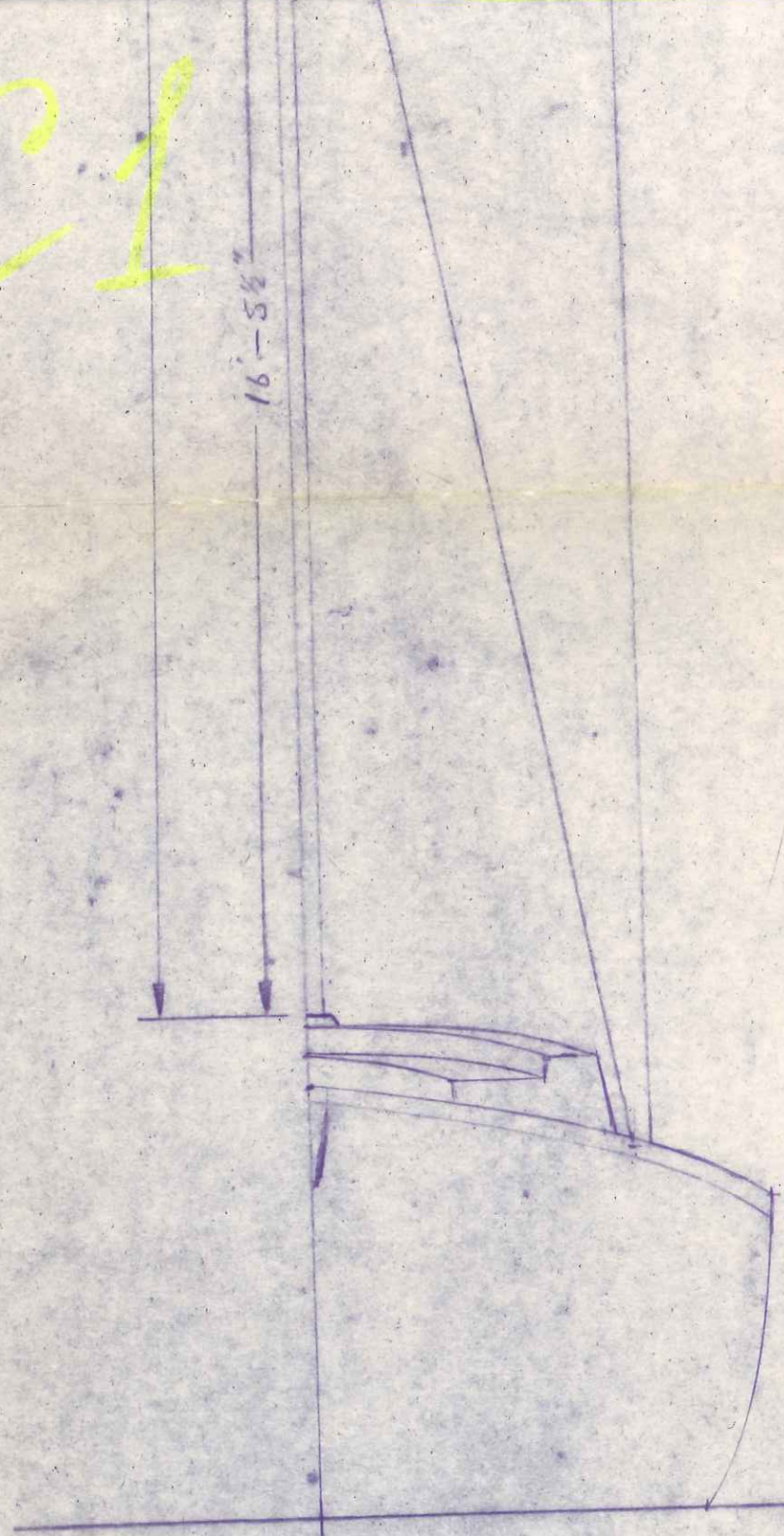


NOTE: TELL GIBB SHEETMASTER 3 WINCHES TO BE MOUNTED ON
 MAST FOR HALLIARDS

C3

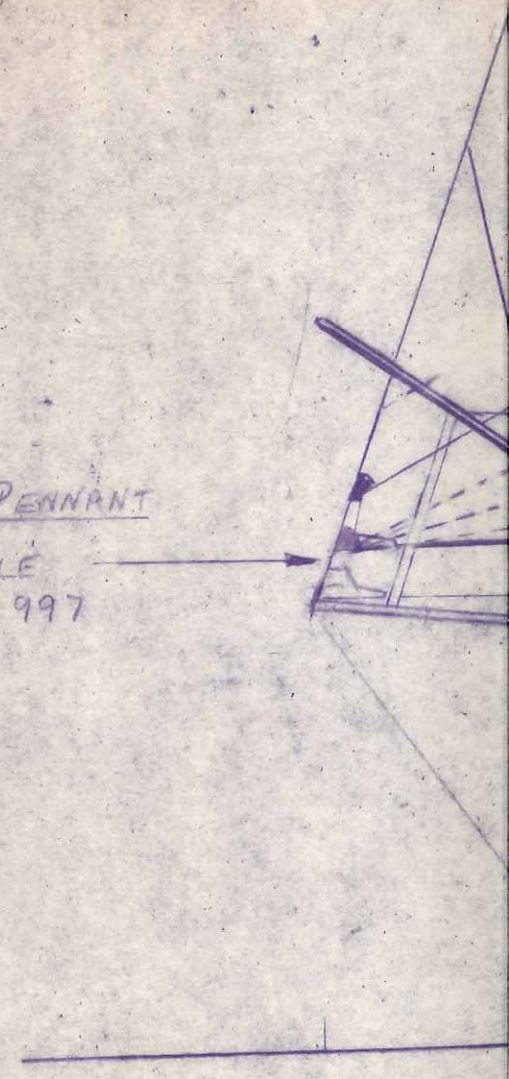
C1

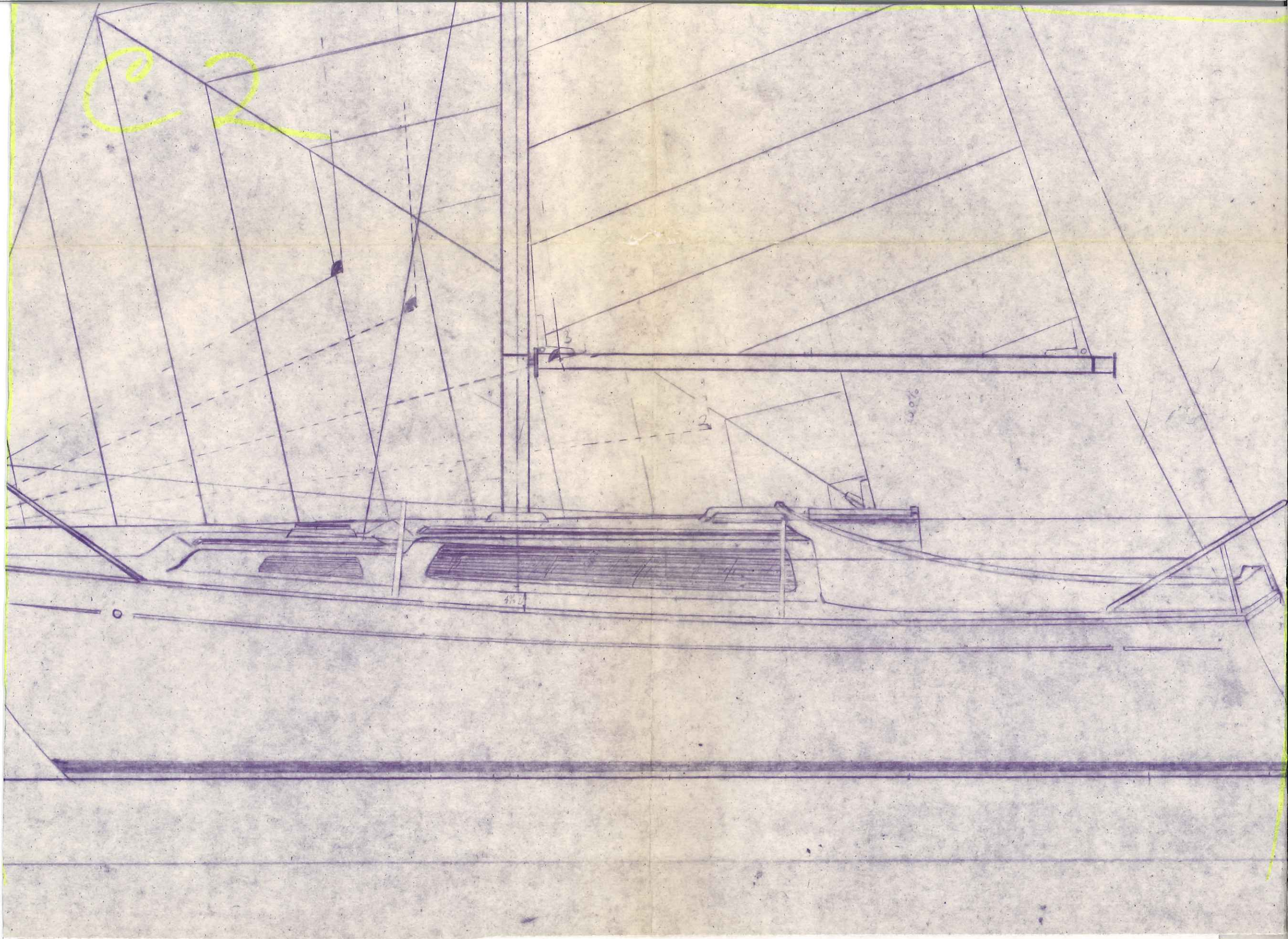
16'-5 1/2"



FOR CHAINPLATE POSITION
SEE DRG. NO. S/385/8

TACK PENNANT
SNAP SHACKLE
GIRZ. N° 997





6.10M	4.425	2.804	5.574	20" TACK PENNANT	13'-9" HEAD PENNANT
8.38M	6.48M	3.54	73 FT ²	Ditto	Ditto
			10.65	8'-0" HEAD PENNANT	

C3

©

ANGUS - S. PRITROSE

YACHT DESIGNERS
 MERCURY YACHT HARBOUR
 HAMBLE
 HAMPSHIRE
 ENGLAND.

MARCH 1974

DESIGN	MOODY 30
ITEM	SAIL PLAN
SCALE	1 : 24 1/2" = 1'
DES. NO	S/36516
ISSUE DATE	21/5/74

	GENOA 1 & 2 REDRAWN TO
FEB 76	NEW SHEET POSN
MARCH 75	SAILS REDRAWN
5 FEB 75	MAIN WINCHES ON TO MAST
4 DEC 74	JIB SHEETS ALTERED SPR. POLE LIFT MOVED
DATE	MODIFICATION

21/5/74

22	5	STORM JIB
	4	JIB

