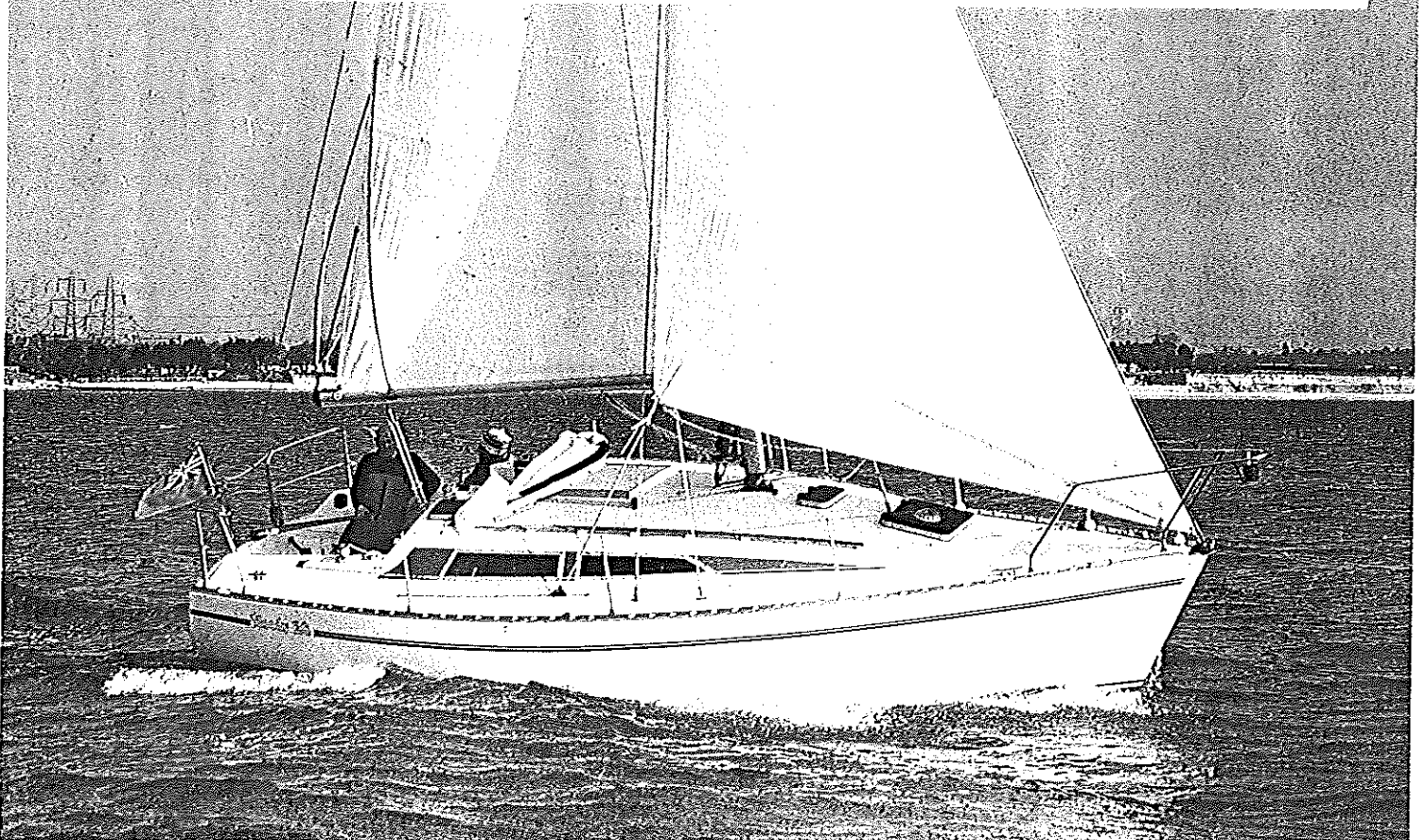
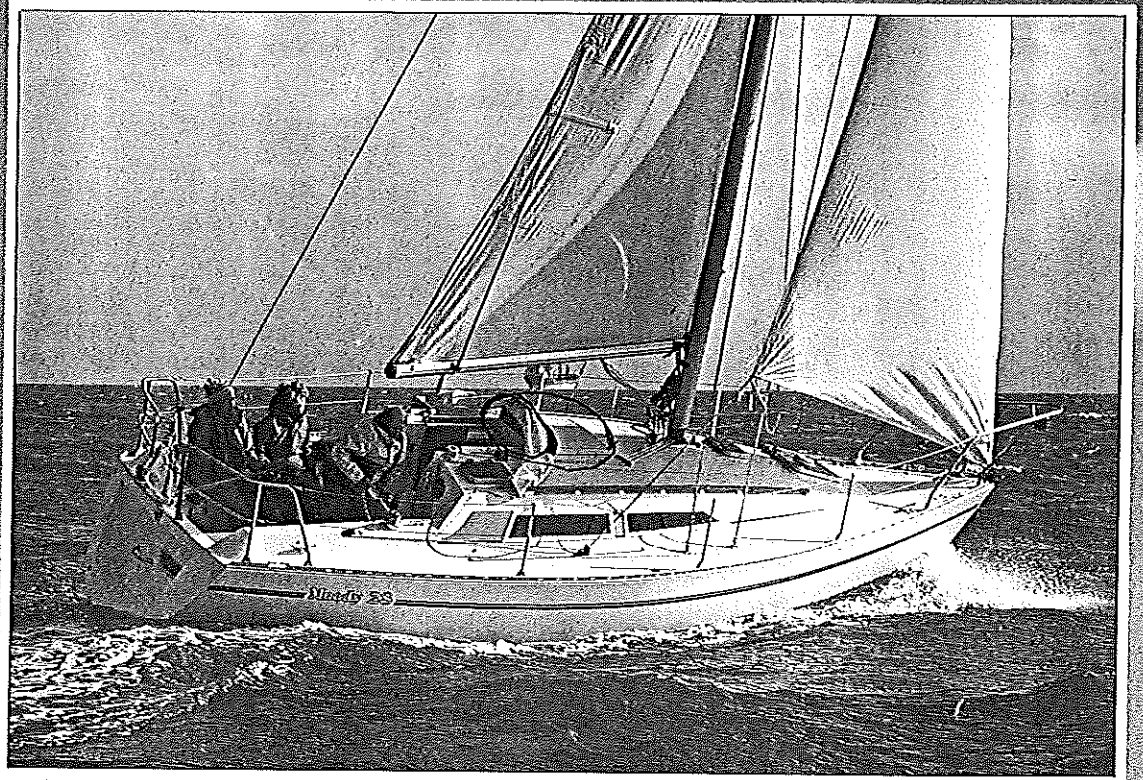
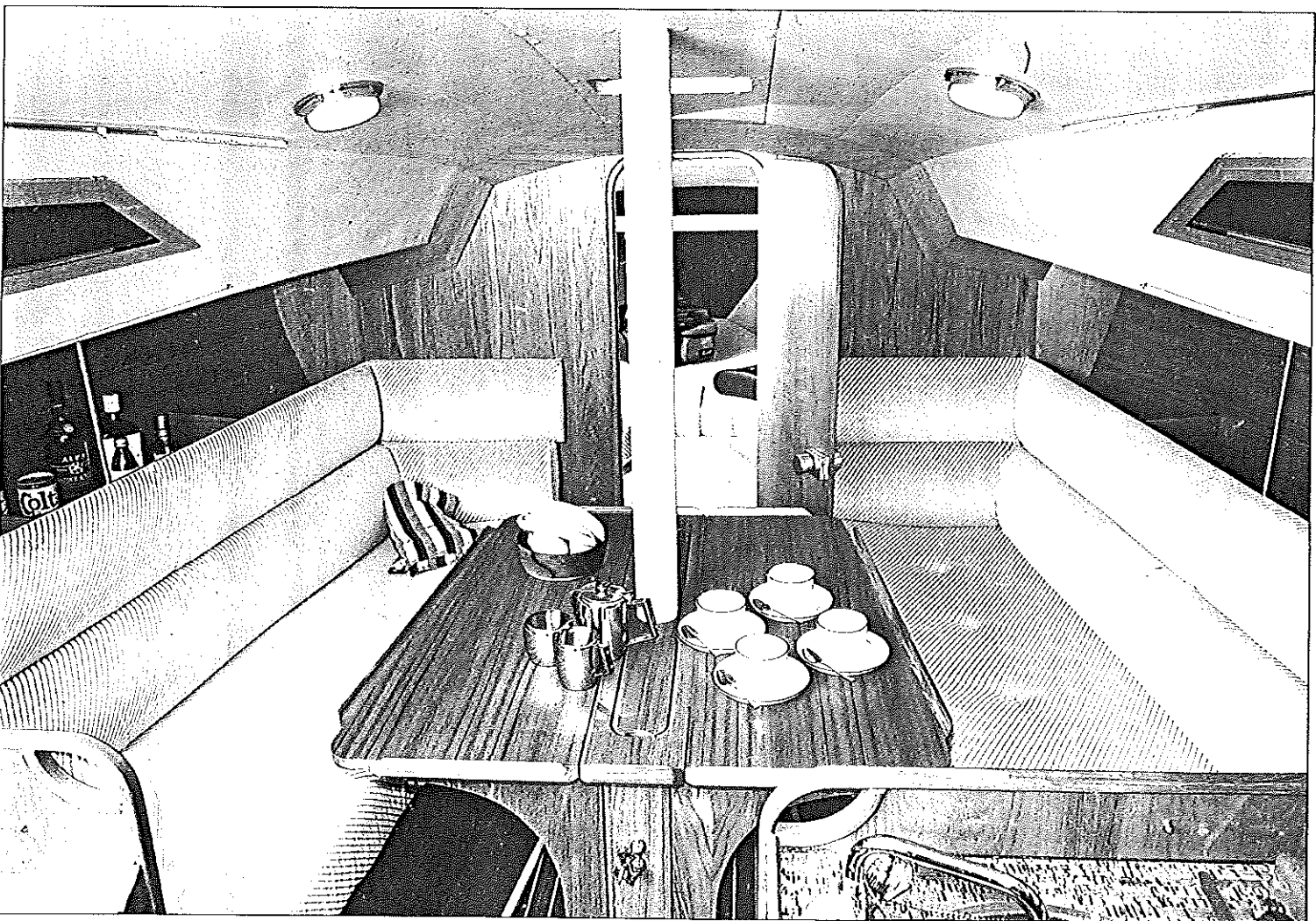
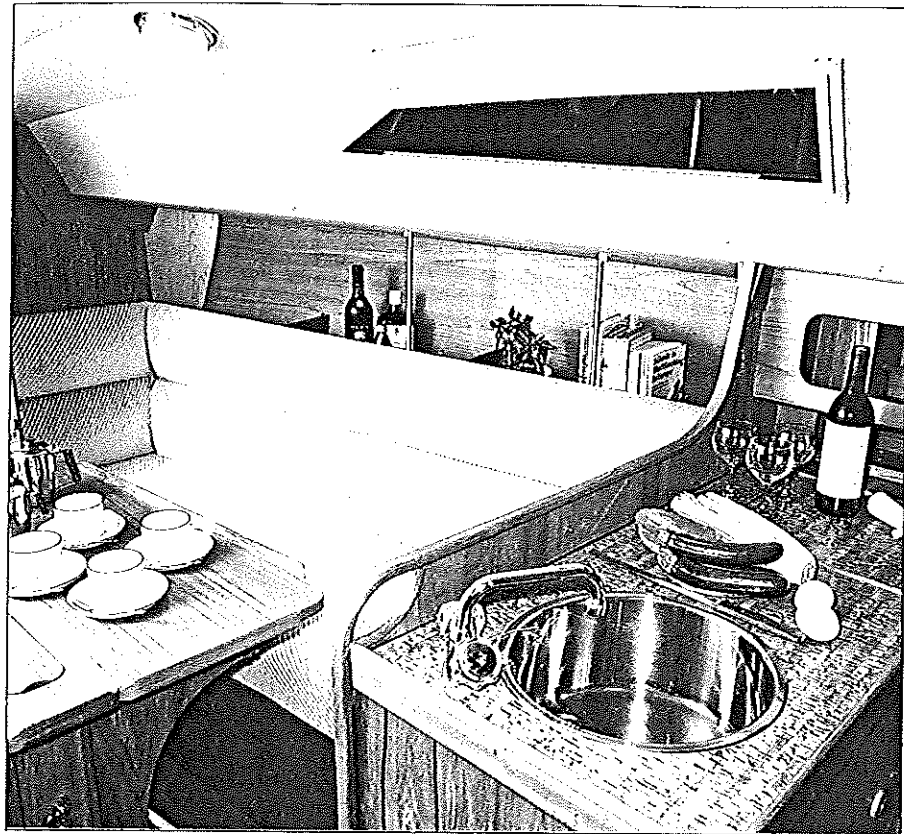


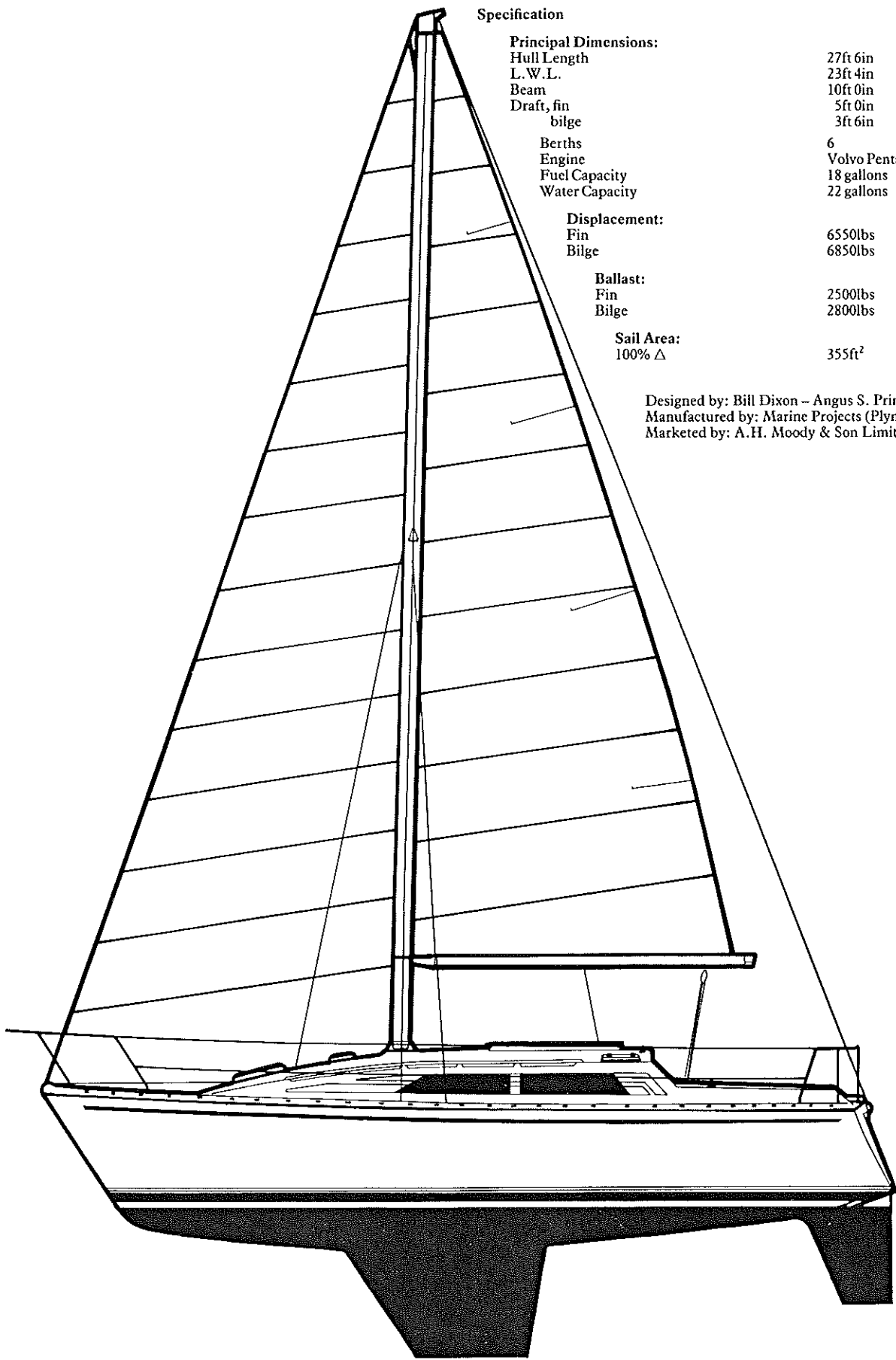
# Moody 28





**A. H. MOODY & SON LIMITED**  
Swanwick Shore Road . Swanwick . Southampton . Hants.  
Telephone: Locks Heath (048 95) 6116 Telex: 477536  
Built by Marine Projects (Plymouth) Limited  
Designed by Bill Dixon of Angus S Primrose Limited

# Moody 28



## Specification

### Principal Dimensions:

Hull Length	27ft 6in	(8.38m)
L. W. L.	23ft 4in	(7.11m)
Beam	10ft 0in	(3.05m)
Draft, fin	5ft 0in	(1.52m)
bilge	3ft 6in	(1.06m)
Berths	6	
Engine	Volvo Penta 2002 18h.p. (or 2001 9h.p.)	
Fuel Capacity	18 gallons	(81.8 litres)
Water Capacity	22 gallons	(100 litres)

### Displacement:

Fin	6550lbs	2972kg.
Bilge	6850lbs	3108kg.

### Ballast:

Fin	2500lbs	1134kg.
Bilge	2800lbs	1270kg.

### Sail Area:

100% $\Delta$	355ft <sup>2</sup>	33m <sup>2</sup>
---------------	--------------------	------------------

Designed by: Bill Dixon - Angus S. Primrose Ltd.  
 Manufactured by: Marine Projects (Plymouth) Limited  
 Marketed by: A.H. Moody & Son Limited

The MOODY 28 is the latest in the Moody line, designed by Bill Dixon of Angus Primrose Ltd. as her extremely successful sister, as her extremely successful sister, and stability and stylish appearance.

The deck layout is modern, easy to work, with winches and cleats are well up to the pulpit, pushpit, guard wires and with the Moody pedigree) is your

Her exceptionally spacious accommodation comfortably sleep six in three

In the forepeak there are two sleeping places, a double by means of an infill pillow and PVC 'dry bags' are provided.

The large saloon, which extends to the aft, leaving the aft section free, as the main hatch. Settee

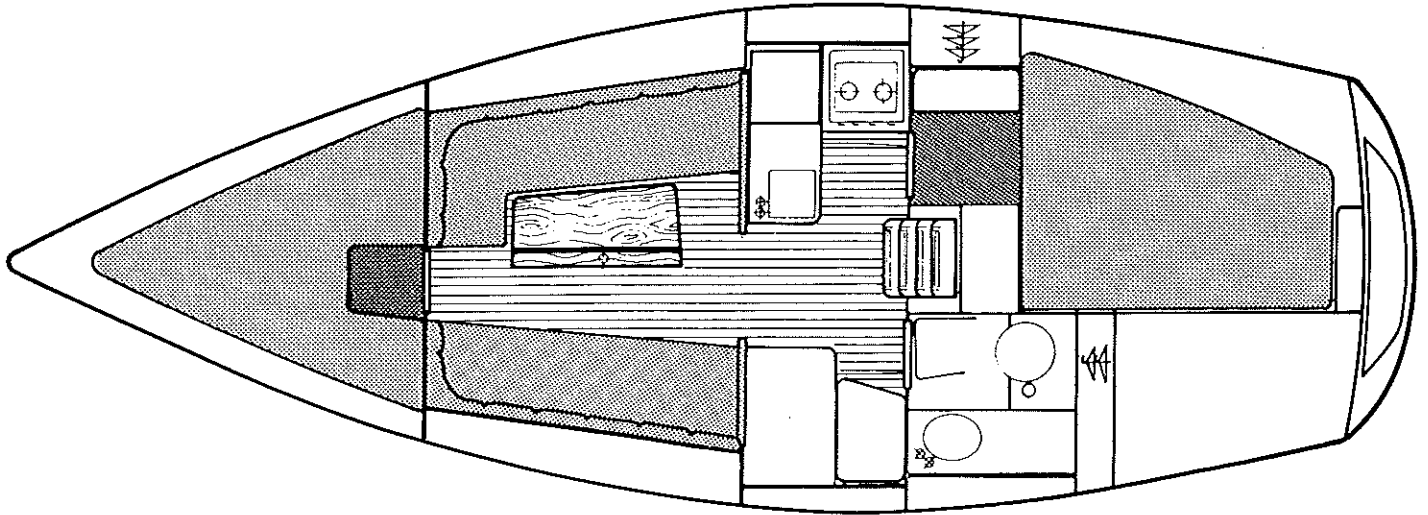
The compact and easy to work galley is on the starboard side. It is fitted with a deep single stainless steel sink with a draining board, crockery, cutlery and food and when working in the galley.

On the portside, opposite the galley, is a cushioned seat and plenty of room for a stereo electrical system and echo sounder. A head/shower compartment fitted with a mirror, ample elbow and headroom, storage lockers provided behind the WC.

The private after cabin, on the starboard side, is this size. The berth is big enough for a child, plenty of stowage space and ventilation.

A substantial diesel auxiliary generator is housed in an acoustically silenced compartment.

The Moody 28 is a fast, spacious and comfortable. Many innovative new features tested in 'Yachting World' sea trial



the completely new line up of Moody yachts designed by [Name]. She has been created along the same design concepts as the craft – speed, sailing performance, comfort, strength and reliability.

workable and has a high specification of equipment; the job and a substantial alloy toe rail integrates with the stanchions. A Lloyds Construction Certificate (together with the assurance of a lasting investment.

accommodation, with good headroom throughout, can accommodate separate cabins.

berths in a 'V' formation which can be converted into a double berth, there is ample underberth stowage space in which

well forward in the boat, has two settee berths forward of the working area of the yacht, with a good headroom throughout. The upholstery and furniture are all teak finished.

Galley is positioned at the aft end of the saloon on the starboard side. Two burner cooker with oven and grill, ice box and and a hand pumped fresh water. There is ample stowage for provisions. The cabin windows give a good view of the outside world

Navigation area, is the navigation area complete with chart table, instruments, manuals etc: the panel for the craft's instruments are also positioned here. Aft of this is a well laid out toilet with sea toilet and wash basin with fresh water. There is ample stowage for toiletries and a useful hanging space for oilskins in

Starboard side, is particularly comfortable for a yacht of this size. For two large adults, there is a large hanging locker, and ventilation is good.

has good performance under power and is fitted in a compact layout; there is good access around the engine.

and extremely well fitted out craft which incorporates all the latest equipment to meet the exacting demands of today's sailor. A recent award has been

"This 28 footer is one of the nicest we have tested. Modern good looks are complemented by the most comfortable interior. Handling under power is very good indeed and no-one could be disappointed with her sailing performance."

Thus the Moody 28 continues the Moody tradition of excellence in a modern design that gives her owner a true investment in terms of value, safety, comfort and performance.

## EQUIPMENT

**Spars and Rigging:** Spars in silver anodised aluminium, mast incorporates winches and cleats for main and foresail halliards and reefing winch, internal halliards, aerofoil spreaders, integral spinnaker track, deck floodlight and steaming light, boom complete with slab reefing hooks, integral stoppers, internal reefing lines and clew outhaul. Standard rigging in stainless steel wire with stainless steel rigging screws, terylene halliards, kicking strap, burgee halliard and topping lift.

**Deck equipment:** Aluminium alloy toerails incorporating alloy lifeline stanchions, stainless steel pulpit and pushpit and integral fairleads. Stemhead fitting with chain roller Chainpipe. Mooring cleats for'd and aft (4). Deck fuel and water fillers. Teak handrails to coachroof. Double stainless wire lifelines. Mainsheet track and slider. Genoa sheet tracks, sliders and turning blocks. Two Lewmar two-speed genoa winches and cleats. Ventilite vents to forecabin, toilet and main saloon. For'd hatch. Main hatch and garage. Teak washboards.

**Sails:** Mainsail and Working jib supplied as standard, complete with bags, tacks and hanks.

**Cockpit:** Large self draining cockpit, tiller steering, sail locker, self venting gas locker with space for 2 bottles, bilge pump. Bathing/boarding platform built into transom.

**Hull and superstructure:** Hull finished in white high gloss self coloured gelcoat, waterline and flash painted, hull antifouled. Superstructure in white with moulded integral non-slip surface.

**Engine/Electrical:** A suitably sized diesel from a recognised manufacturer, flexibly mounted and acoustically silenced, two bladed propeller. Alternator charges heavy duty battery via main switch. Common earthing system to sacrificial anode. 12v lighting in for'd cabin, toilet and main saloon. Full set navigation lights, compass light, deck light, steaming light.

**Further standard equipment:** Bilge pump (through cockpit mounted), porthole compass, dry powder fire extinguisher. Anchor complete with chain. Two winch handles, warps and fenders.