

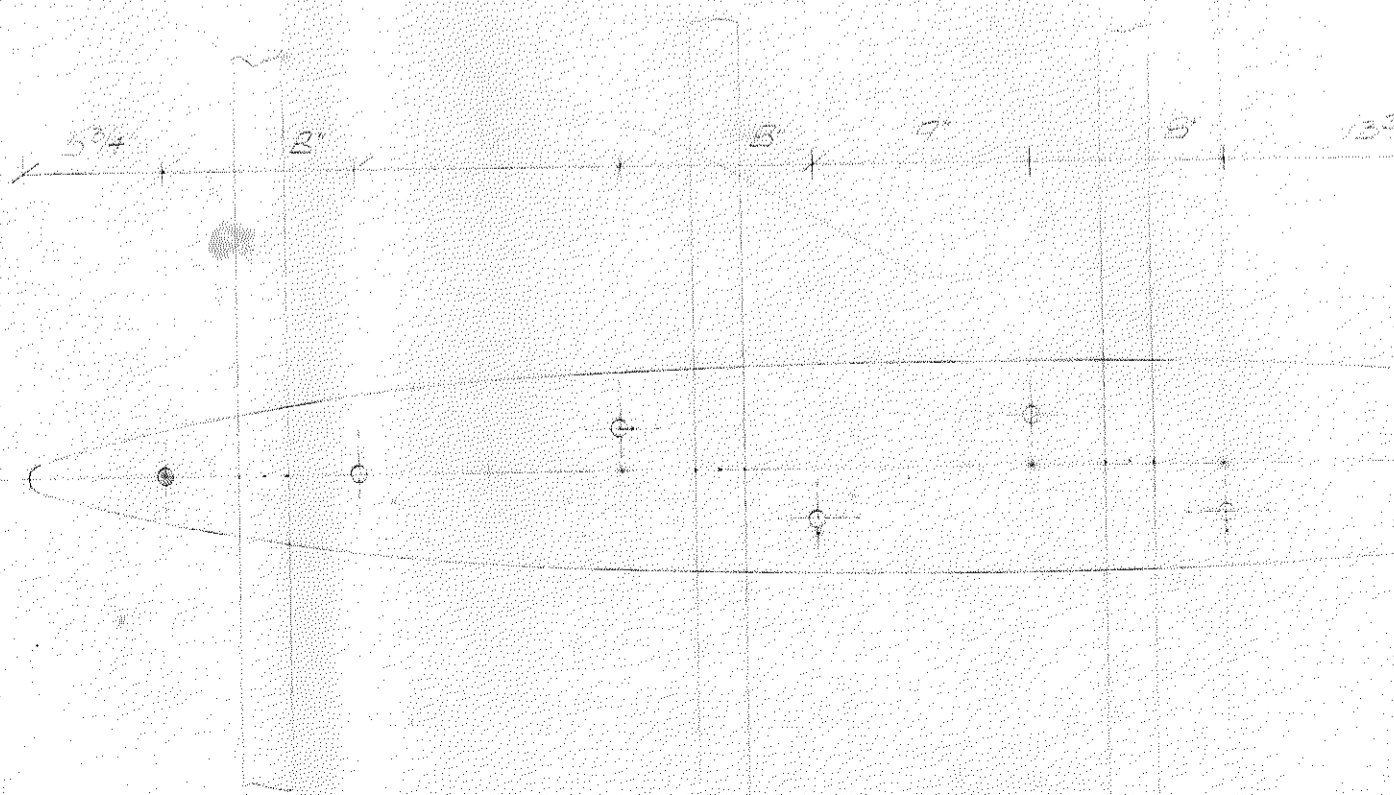
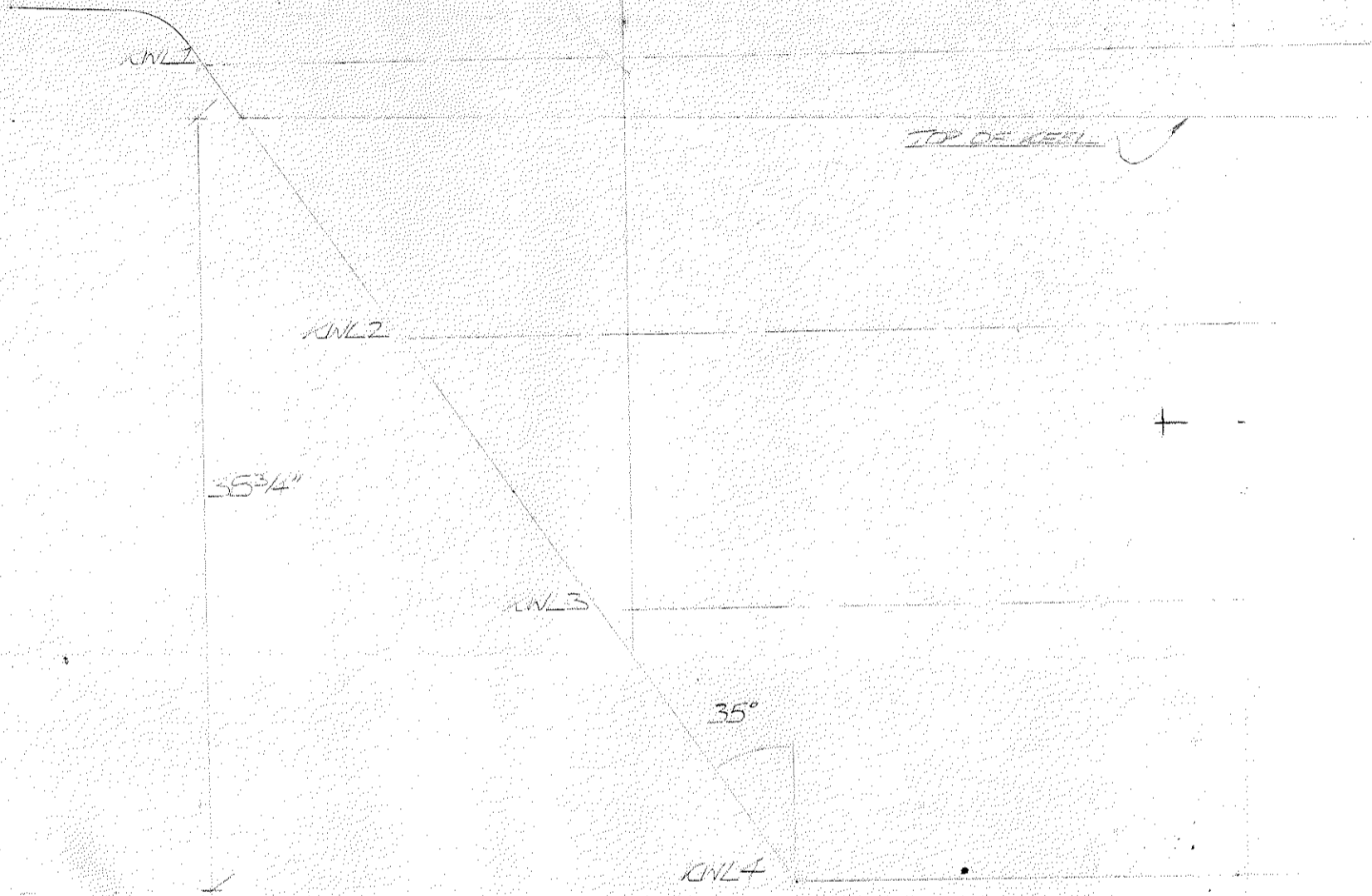
Scanned in 4 sections

A1	B1
A2	B2

A1

3

4



B1

6

7

DWL

350mm

350mm

37/8"

350mm

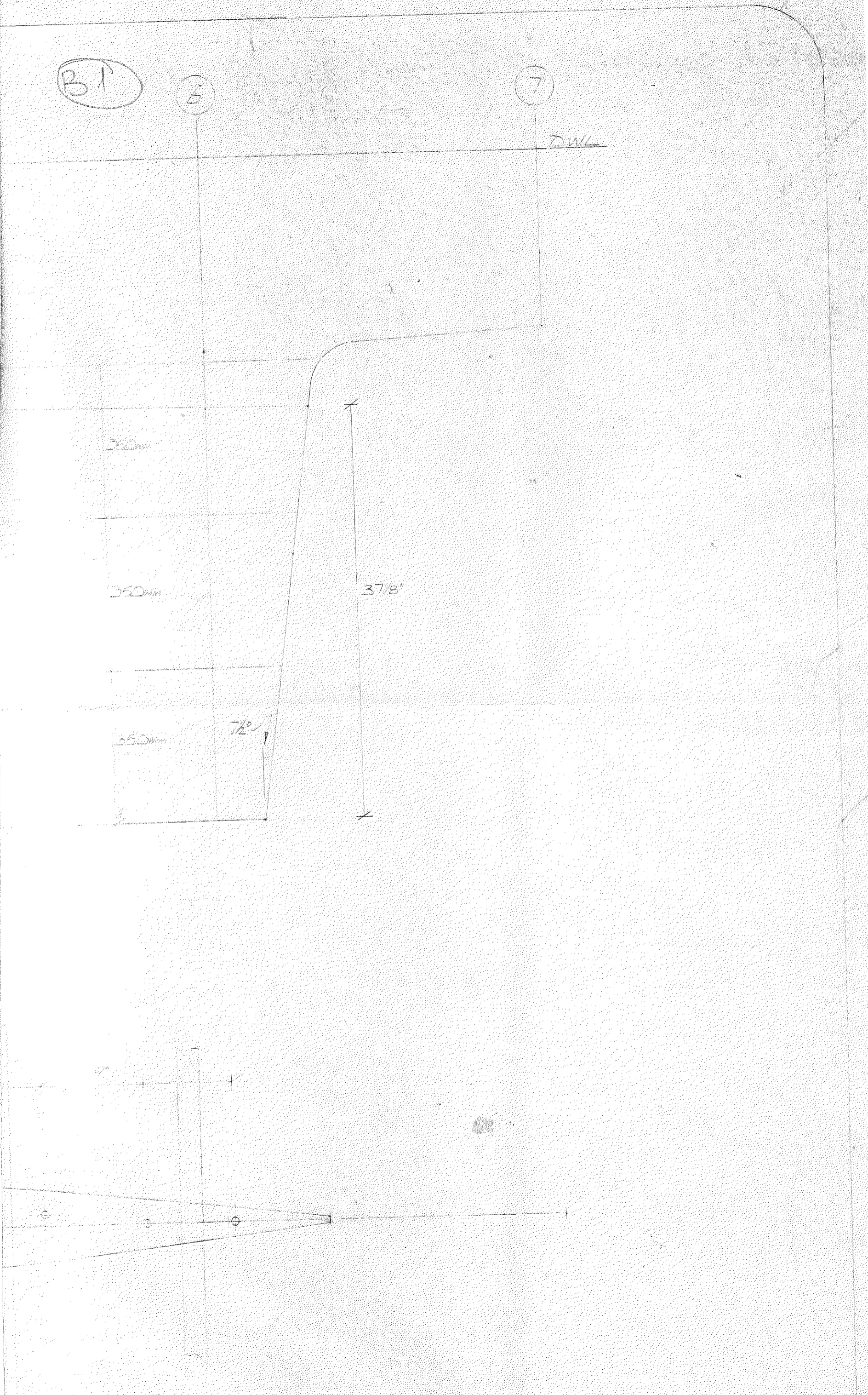
7/2"

7

e

s

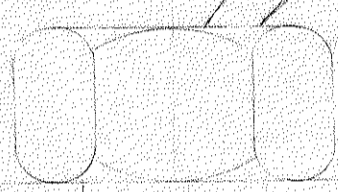
o



A2

SYSTEMS

BEDDING, SEALING AND LOCKING
TO SURVEYORS SATISFACTION.



5/16" DIA. BOLTS
1/4" DIA. BOLT

2 1/2" x 2 1/2" x 1/4" STEEL
WITH RADIUS

5/16" DIA. BOLTS



32

NOTES :-

- 1) CONSTRUCTED IN CAST IRON WEIGHT 3675 LBS
- 2) TOP TO BE MATCHED ACCURATELY TO PATTERN SUPPLIED BY MARINE PROJECTS
- 3) SEE CONSTRUCTION TECH FOR STIFFENING
- 4) KEEL BOLTS - 9 x 24mm MILD STEEL

WASHER CORNERS

UNCONTROLLED



C	WASHER SIZE CHANGED. FROM 3"x3" TO 2 1/2" x 2 1/2"	ECT	1.NOV.89
B	LLOYDS RECOMMENDATIONS ADDED	J.FROVD	10-3-89
ISSUE	MODIFICATION	DRAWN	DATE

ANGUS S PRIMROSE LTD
MERCURY YACHT HARBOUR
HAMBLE
HANTS

DESIGN MOODY 31

TITLE KEEL LINES + BOLTING

DESIGNED BY BILL DIXON 7th JUNE '83

SCALE 1/2" = 1' + FULL SIZE DEGN^o S-441-

ISSUED BY
MARINE PROJECTS
DRAWING OFFICE
22 NOV 1993