

DWL

STA. 8

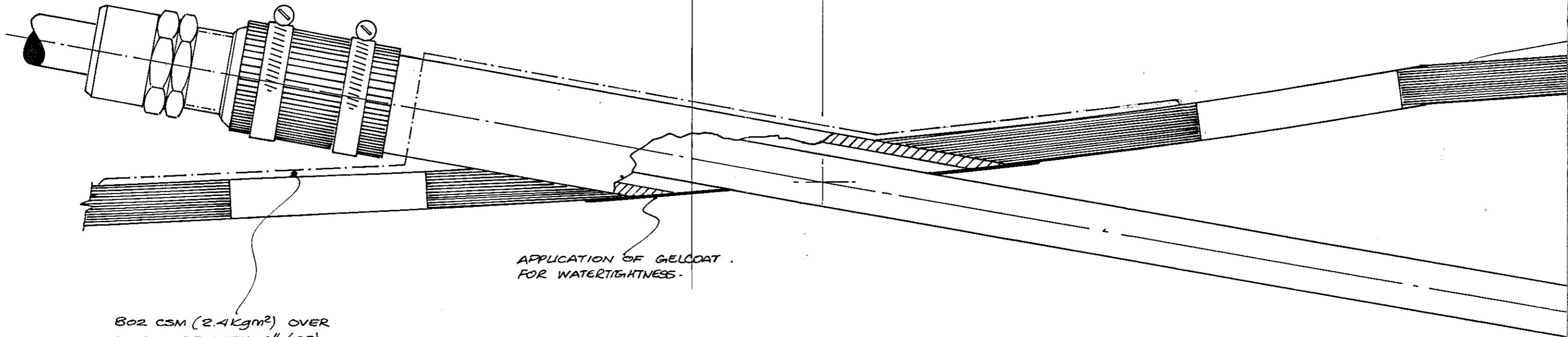
Scanned in 4 sections

A1	B1
A2	B2

A1

HALF FULL SIZE: PROPELLOR BRACKET
STERN TUBE INSTALLATION DETAILS.

23/4"
69



APPLICATION OF GELCOAT .
FOR WATERTIGHTNESS .

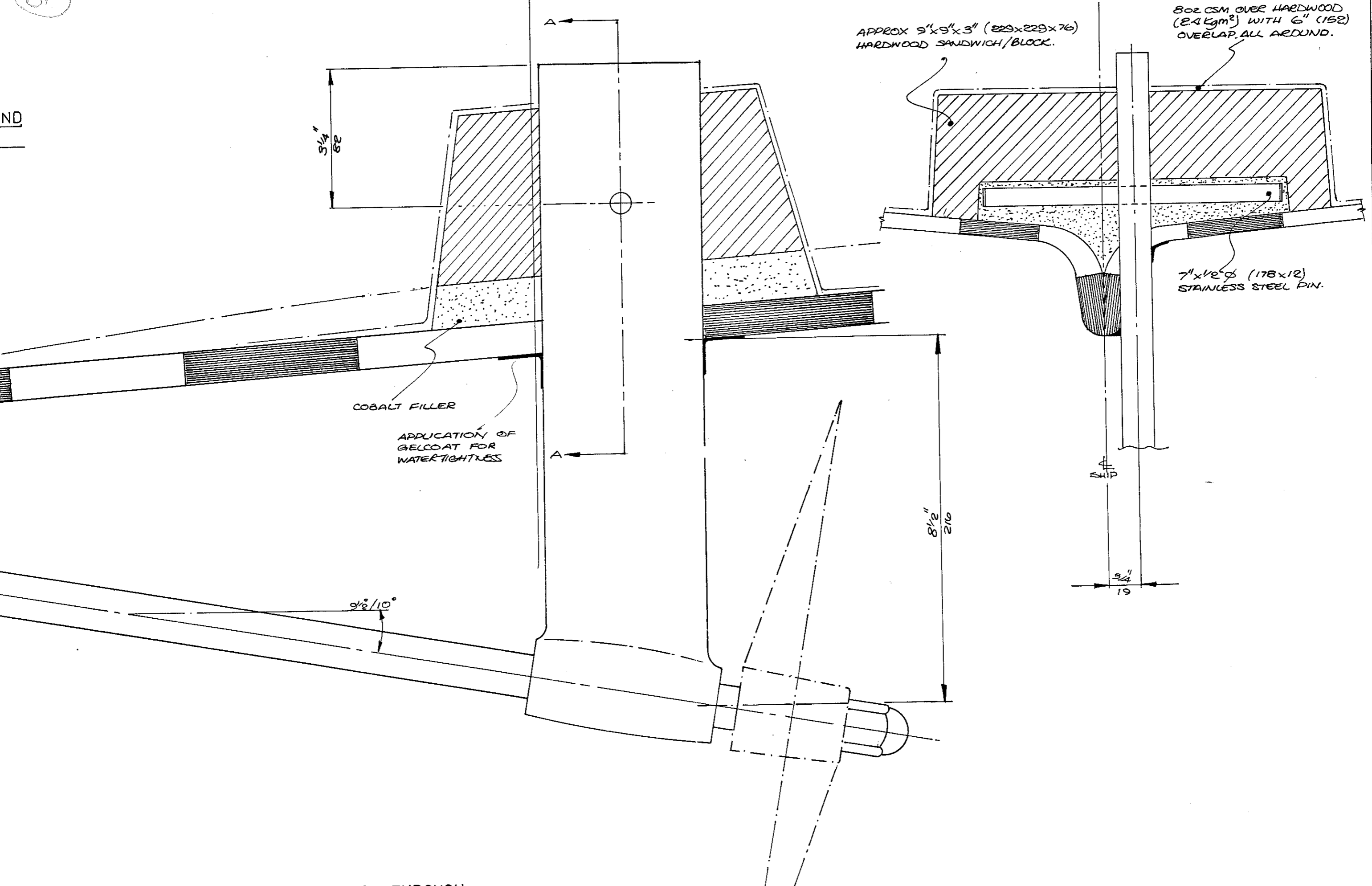
802 CSM (2.4Kg/m²) OVER
STERN TUBE WITH 6" (152)
OVERLAP ALL AROUND.

(B1)

STA. 9

SECTION AA
LOOKING FORWARD

ND



APPROX 9"x9"x3" (229x229x76)
HARDWOOD SANDWICH/BLOCK.

802 CSM OVER HARDWOOD
(2.4 kg/m²) WITH 6" (152)
OVERLAP ALL AROUND.

7" x 1/2" (178 x 12)
STAINLESS STEEL PIN.

COBALT FILLER

APPLICATION OF GELCOAT FOR
WATERTIGHTNESS

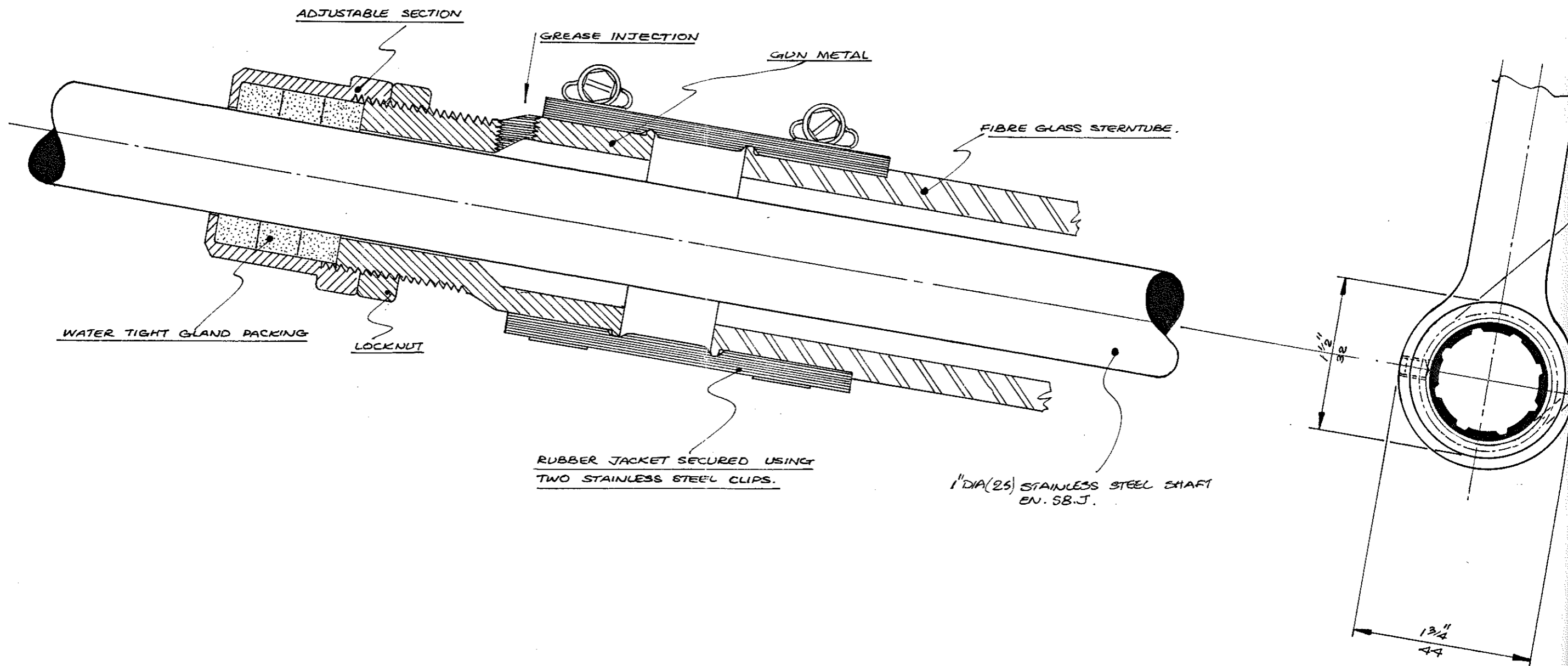
9 1/2 / 10°

8 1/2"
216

7"
178

A2

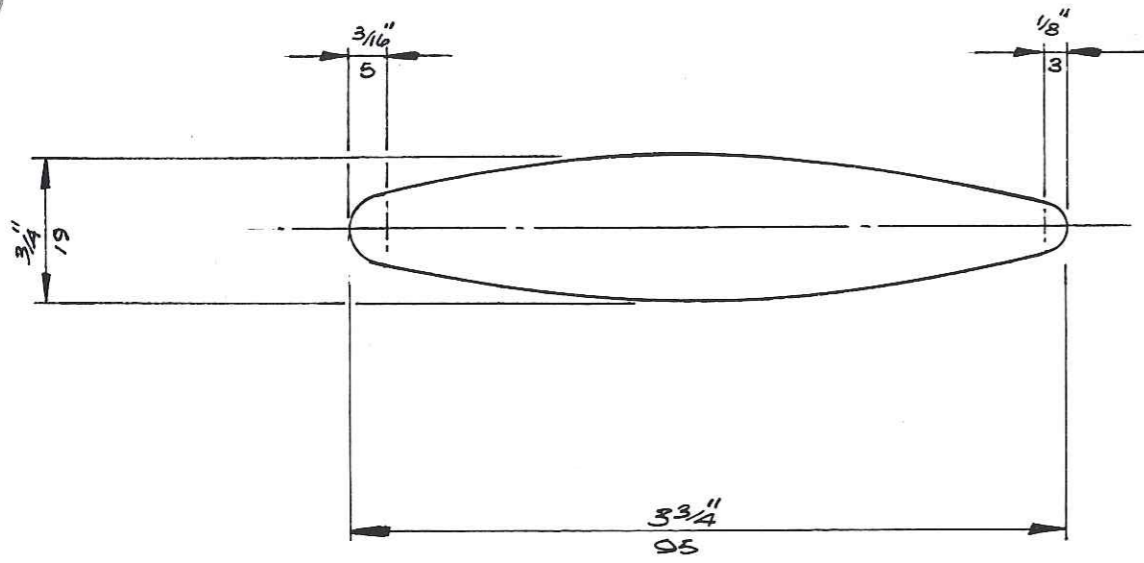
FULL SIZE SECTION THROUGH
STERN TUBE / SHAFT GLAND



ST
G
SU
AG

B2

PROPELLER BRACKET BEARING.



UNCONTROLLED

ISSUED BY THE D. O.

03 SEP 1999

MARINE PROJECTS

'P' BRACKET SPECIFICATION. NAB 2. BS 1400

RUBBER CUTLASS BEARING.

STAINLESS SPLIT PIN

SUPERSEDED
See Gen. all drawings (Hely's approved)

SUPERSEDED

STAINLESS STEEL 1/4 (6) DIA. B SCREWS SECURING CURVE AND CUTLASS BEARING AGAINST ROTARY MOVEMENT.

MARINE PROJECTS (PLYMOUTH) LTD.
 MOODY 31
 'P' BRACKET AND STERN TUBE INSTALLATIONS.
 DR. ECT 16.10.83.
 SCALE: 1/2 FS. & FS. DRN° M31-008

SUPERSEDED