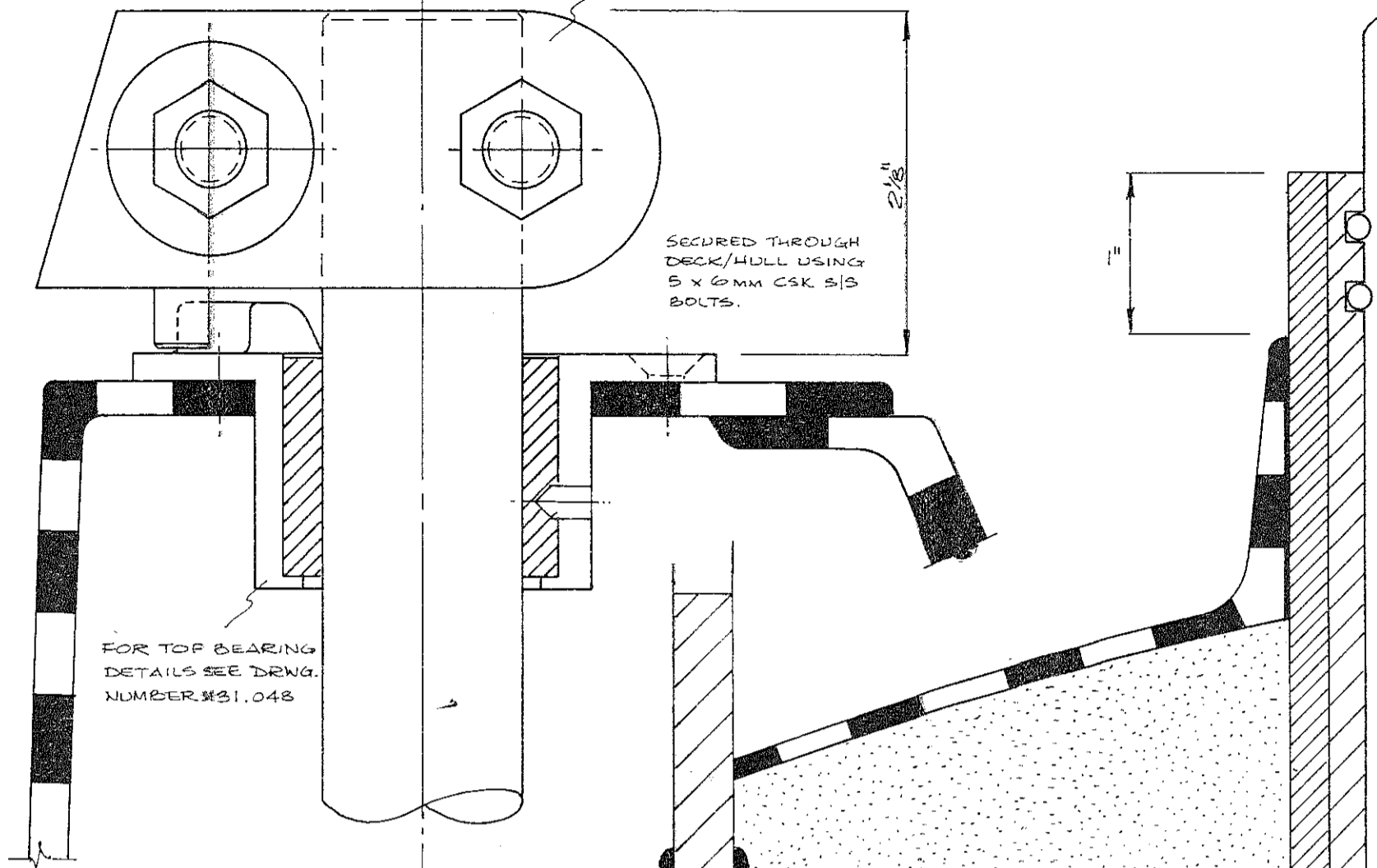


FULL SIZE: SECTION THROUGH TILLER HEAD BEARING, SHOWING TILLER HEAD FITTING.

FULL SIZE SECTION THROUGH RUDDER TUBE.

FOR TILLER HEAD DETAILS SEE DRAWING NUMBER M28.024



SECURED THROUGH DECK/HULL USING 5 x 6 mm CSK S/S BOLTS.

FOR TOP BEARING DETAILS SEE DRWG. NUMBER M31.048

FOR RUDDER STOCK SEE DRAWING NUMBER M31.051

602 CSU.

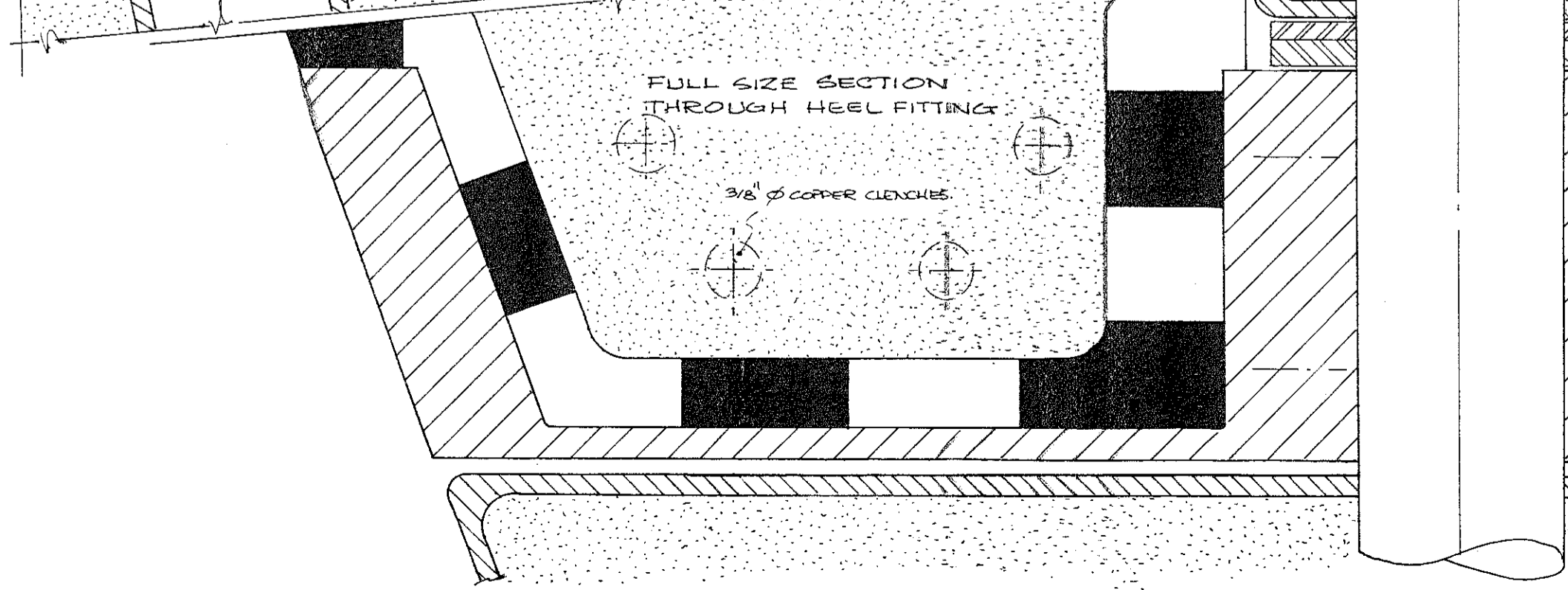
1/4 x 1/4 M/S BOX 'T' BAR

20'x2"x2" PLYWOOD STIFFENER

SEAL AROUND BOTTOM OF RUDDER TUBE WITH GELCOAT

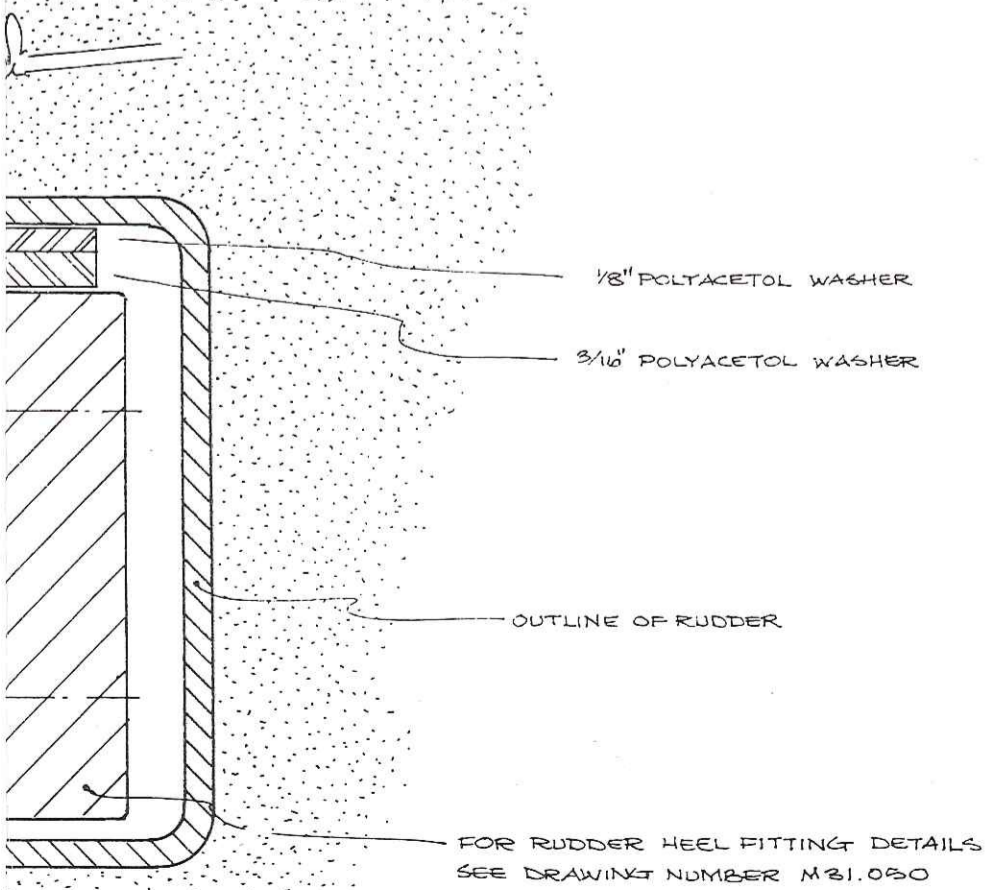
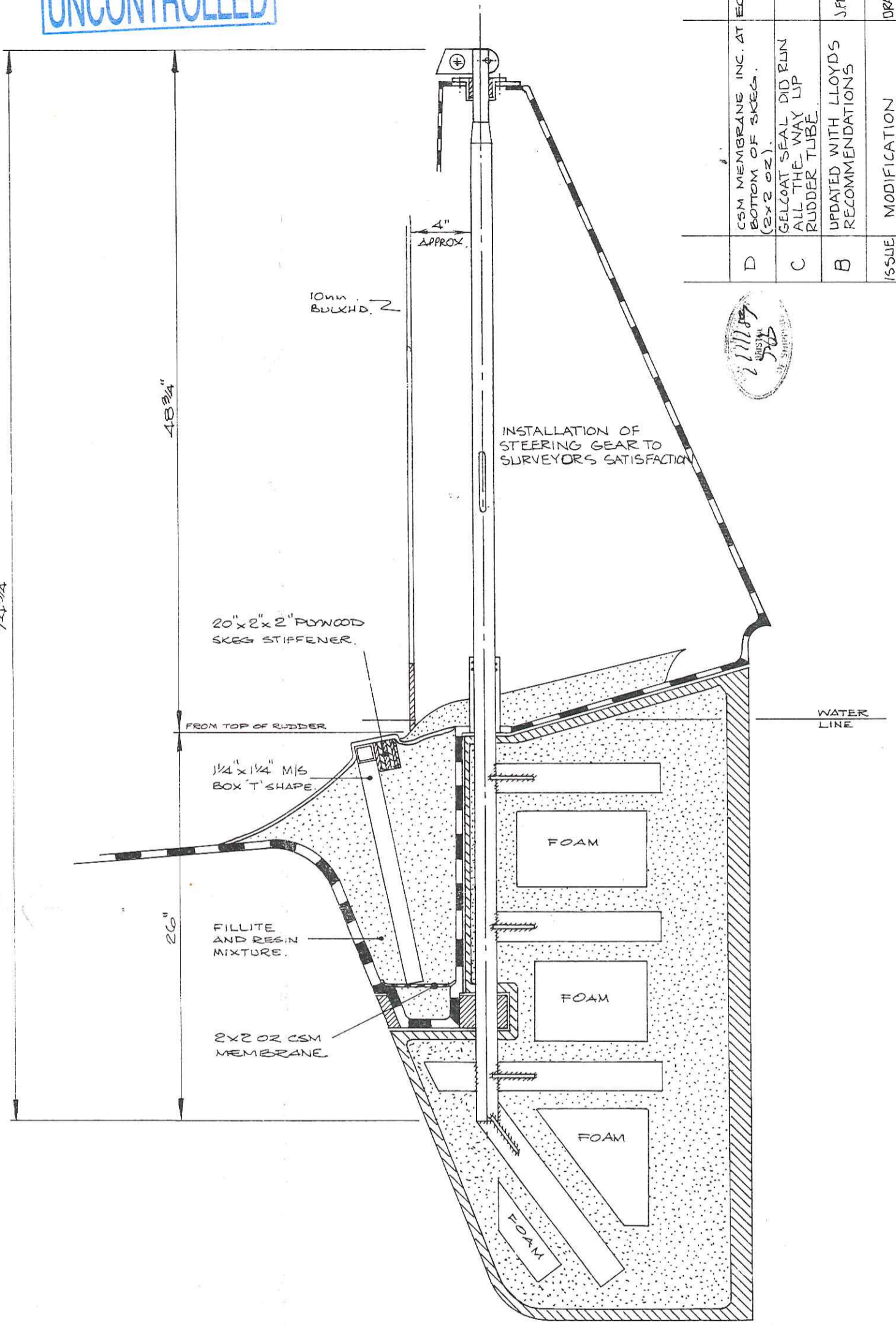
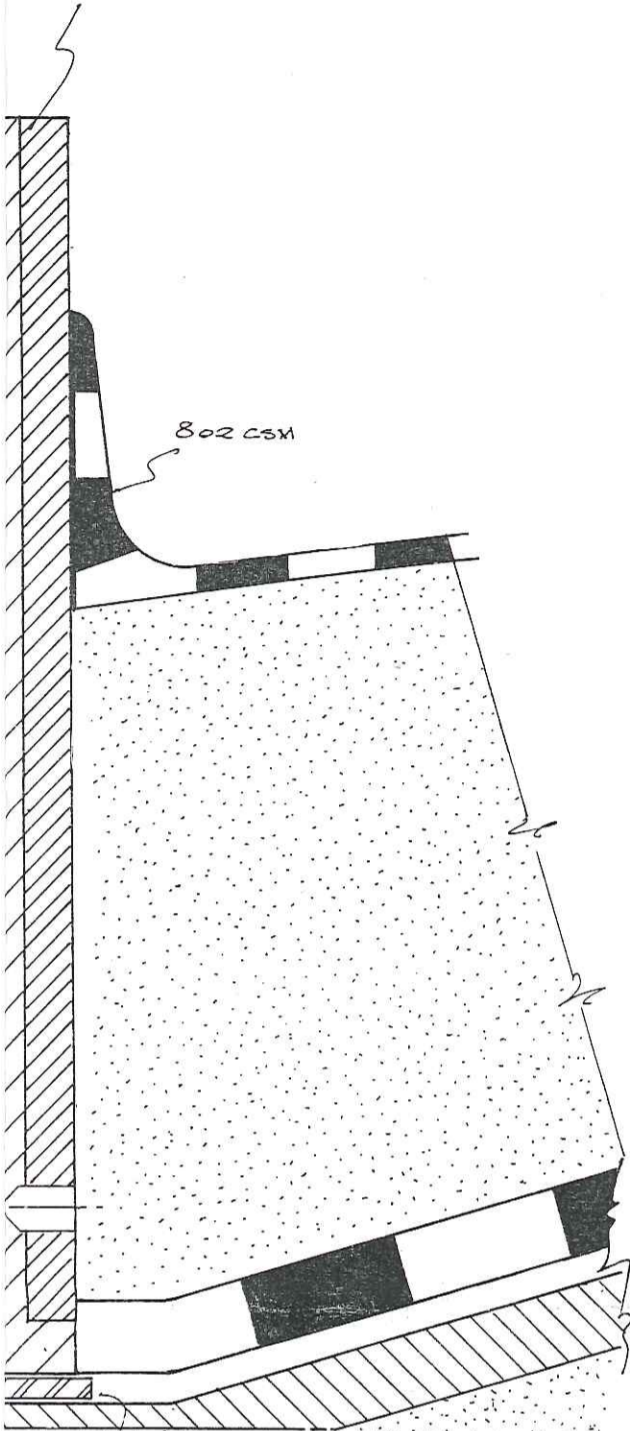
FULL SIZE SECTION THROUGH HEEL FITTING

3/8" Ø COPPER CLENCHES



UNCONTROLLED

FOR RUDDER TUBE
DETAILS SEE DRAWING
NUMBER M31.049



RUDDER LAYUP.

1/2 OZ CSM	1/2
2 OZ CSM	2
FIRET COREMAT	
2 OZ CSM	2
TOTAL	5 1/2 OZ

APPROX WEIGHT OF RUDDER INCLUDING FILLER POWDER & RESIN (EX. RUDDER BAR) = 10 kg.

MARINE PROJECTS (PLYMOUTH) LTD.
MOODY 31
RUDDER CONSTRUCTION & ASSEMBLY.
DR. ECT. 19. NOV. 86.
SCALE DR. NO. M31.052

ISSUED BY
MARINE PROJECTS
DRAWING OFFICE
22 NOV 1993

ISSUE	MODIFICATION	DRAWN DATE
D	CSM MEMBRANE INC. AT ECT. 17.4.89	
C	GELCOAT SEAL DID RUN ALL THE WAY UP RUDDER TUBE.	
B	UPDATED WITH LLOYD'S RECOMMENDATIONS	J.FROUD 14-8-88

211187
ISSUED BY
J.F.S.
22 NOV 1993