

Moody 336

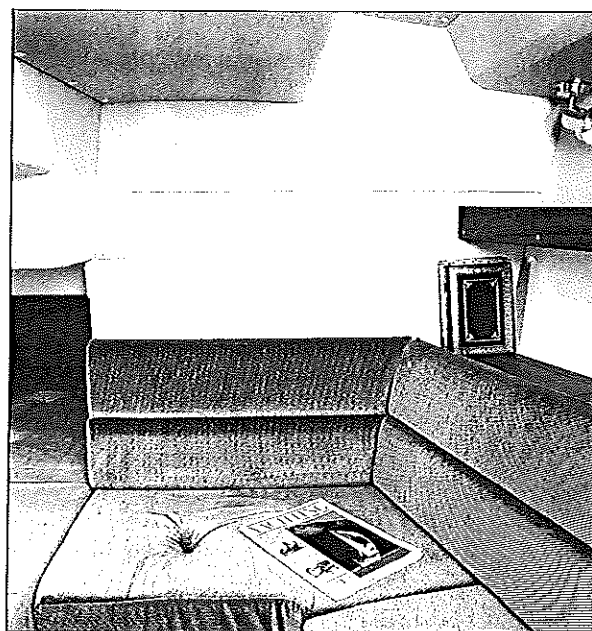
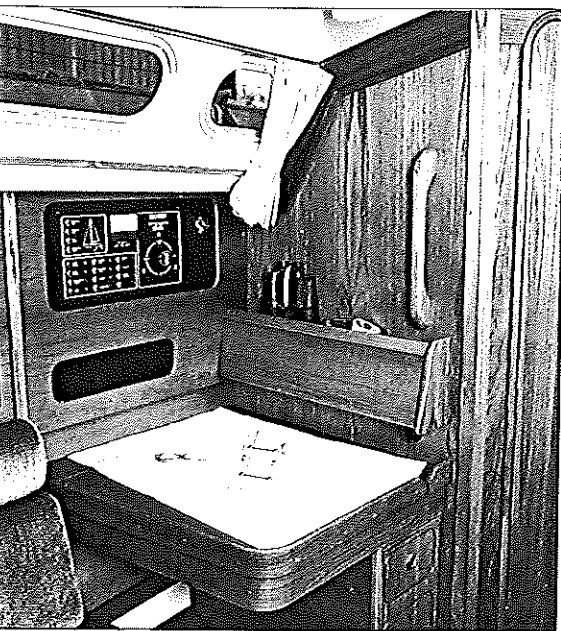
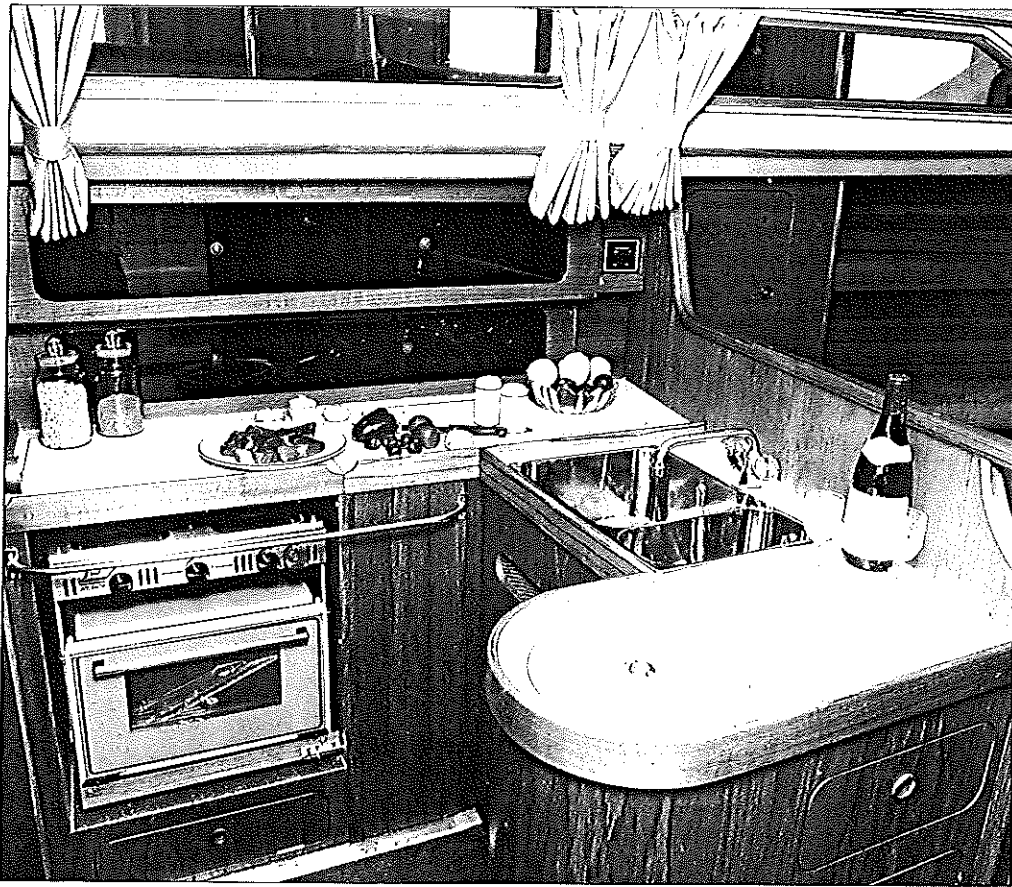
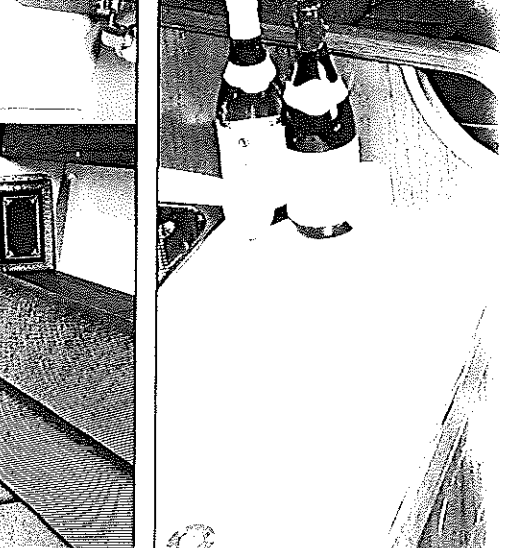
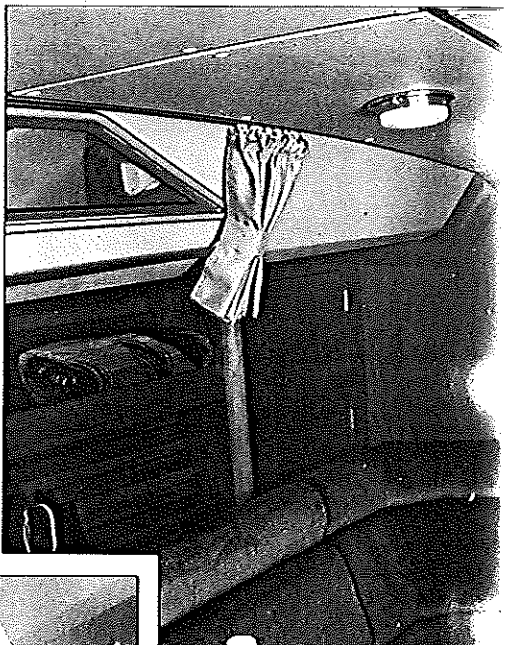
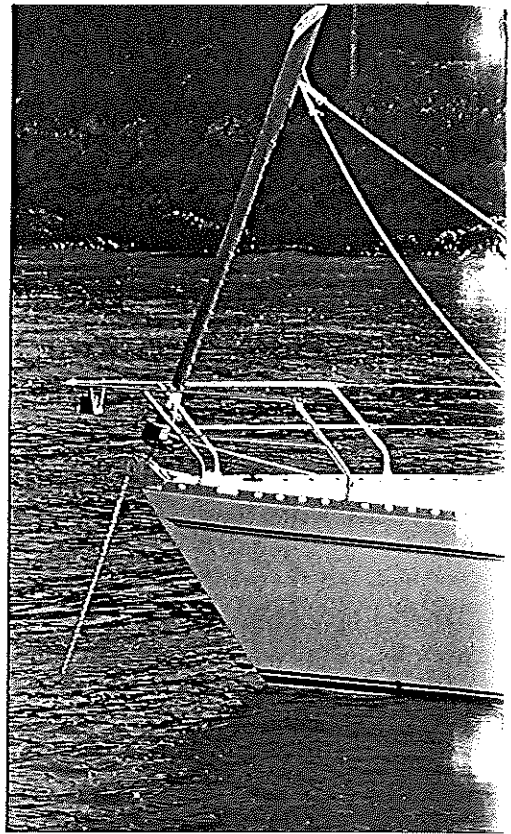


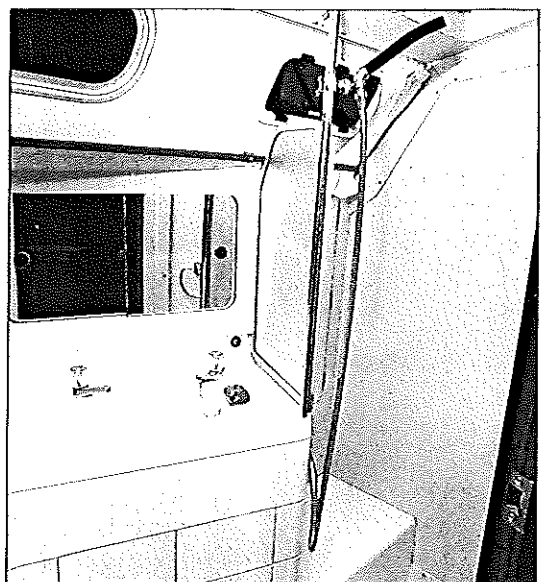
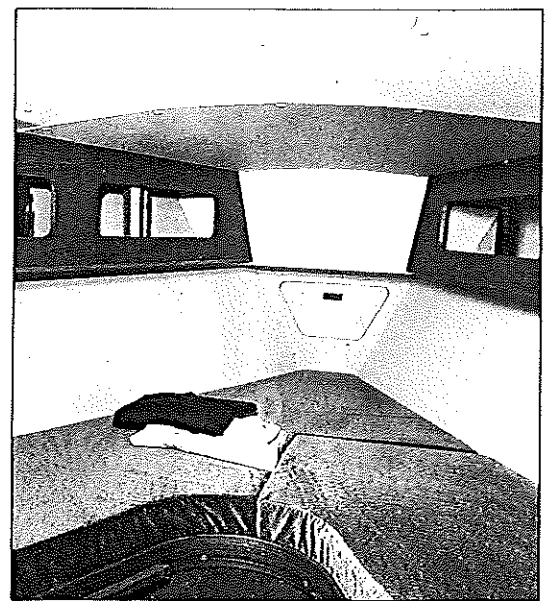
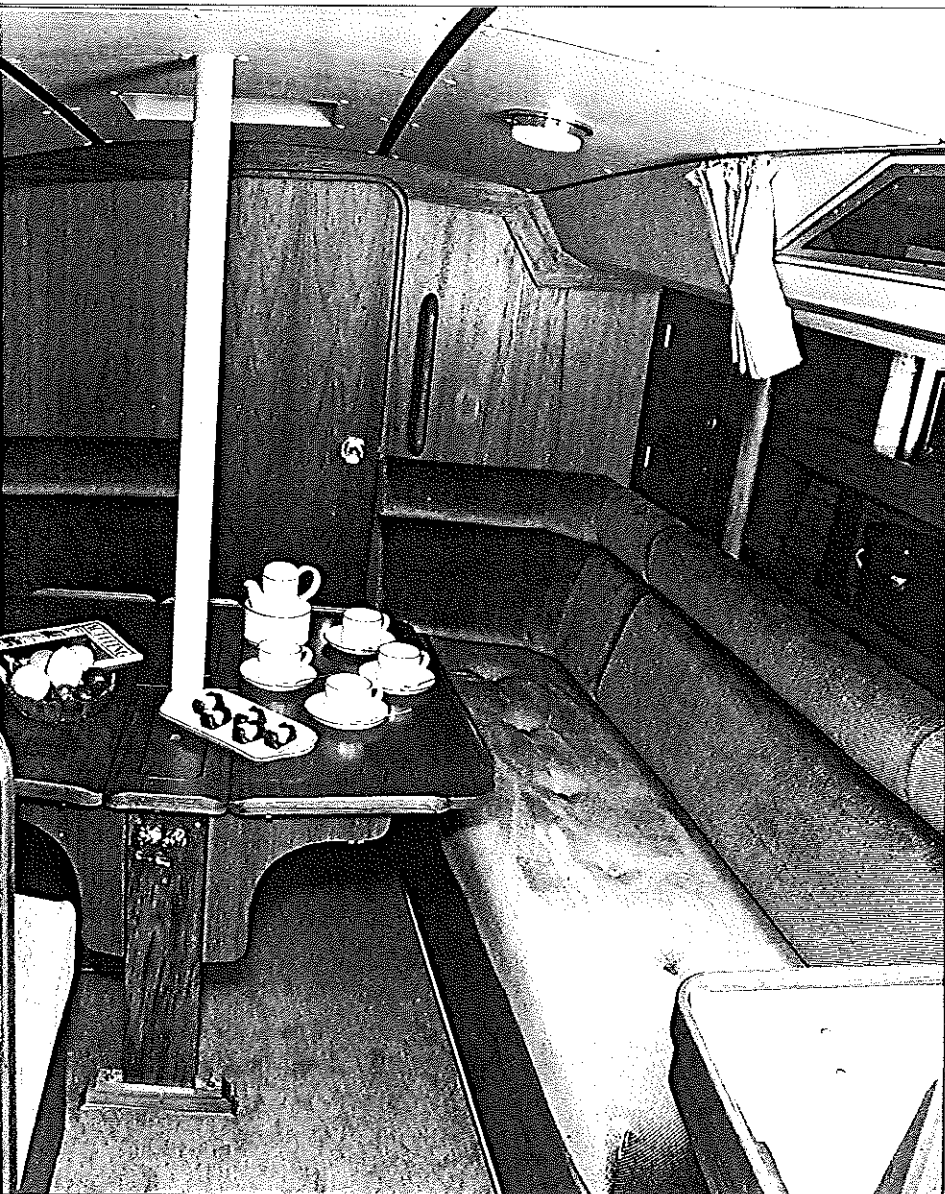
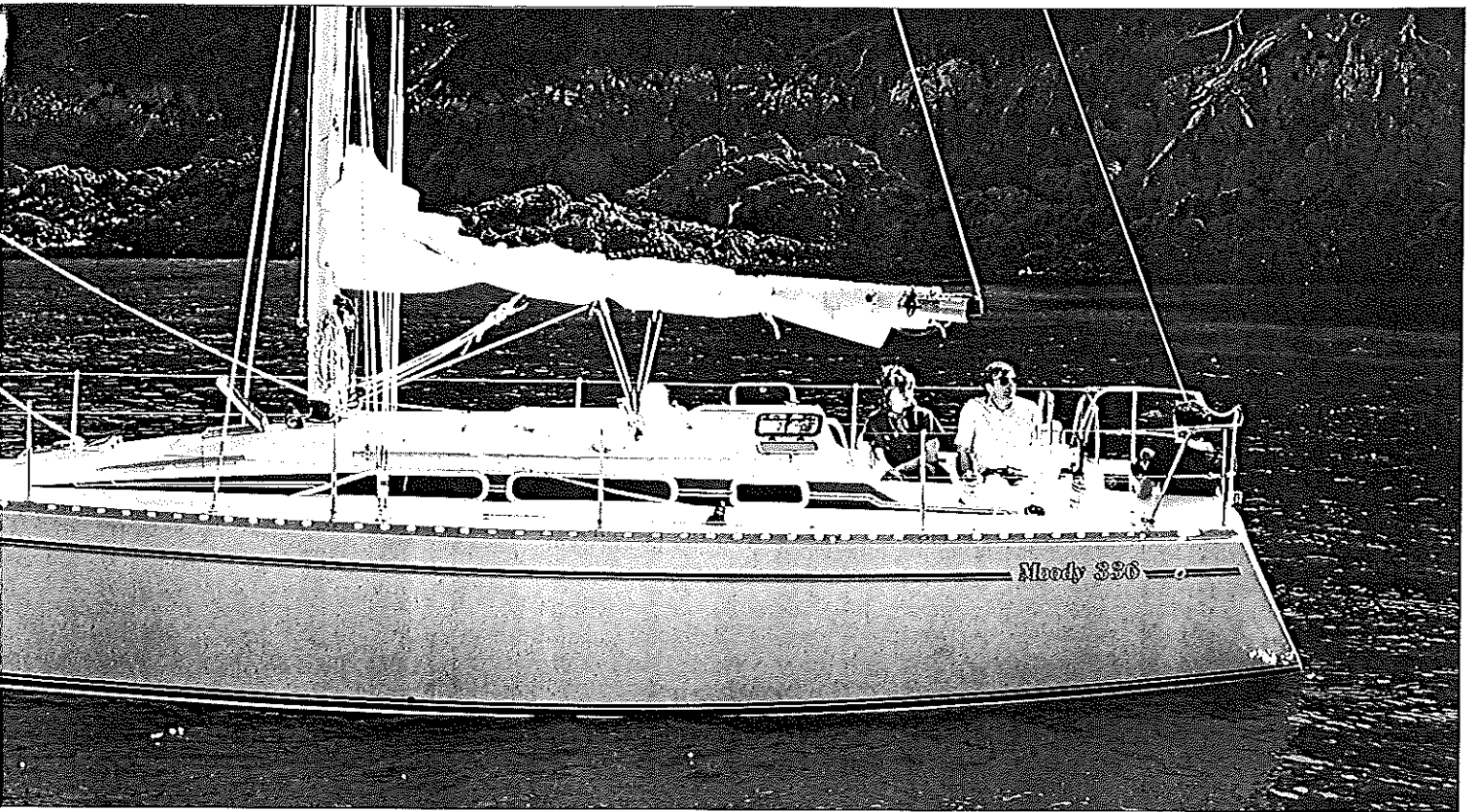
Moody 336

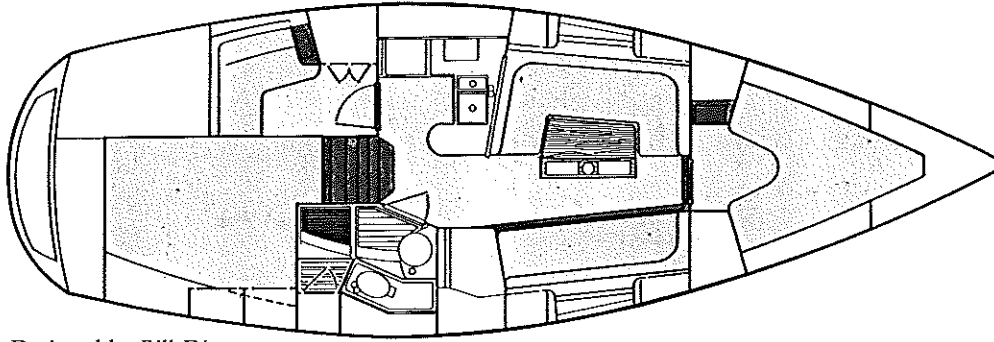
A new aft cockpit yacht which continues the Moody development of craft with an exceptional performance and a high degree of comfort below decks.

With a beautifully appointed, light and airy saloon, an unusually large owner's aft cabin, comfortable for'd cabin, toilet compartment with separate shower, galley and chart space providing all the requirements for relaxed living and practicality at sea.

The 336 inherits the prime qualities of the long tradition of Moody excellence: superb performance with easy handling, sleek looks and immense strength and seaworthiness.







Designed by Bill Dixon
of Angus Primrose Limited.

Built by Marine Projects
(Plymouth) Limited.

Displacement: 10,725lbs 4865kg
Ballast: 3,990lbs 1809kg

Principal Dimensions:

LOA	33.5ft	10.21m
LWL	28.74ft	8.76m
Beam	11.6ft	3.54m
Draft-fin	5.5ft	1.68m
Fuel Capacity	26 gallons	118 litres
Water Capacity	44.5 gallons	202 litres

Rig Dimensions:

I	42.25ft	12.88m
J	13.50ft	4.11m
P	36.00ft	10.97m
E	12.25ft	3.73m

Sail Areas:

Mainsail	220sq ft	20.44sq m
No 1 Genoa	425sq ft	36.48sq m
Roller genoa	378sq ft	35.12sq m
Working jib	258sq ft	23.97sq m

Provisional specification and accommodation

Fore peak: Chain locker

Fore Cabin: A comfortable, roomy cabin with two single berths, which are convertible to a double. Underneath the berths are generous stowage spaces which have PVC liners to protect stowed gear. Locker space is provided round the ships sides above the berths. To the port side is a hanging locker and a vanity unit opposite to starboard. A large opening deck hatch is fitted in the deckhead for light and ventilation. The cabin is fitted out in teak with carpeted floor surface.

Saloon: The light airy saloon has a 'U' shaped settee to port with a single settee to starboard. The centrally mounted saloon table folds out to the complete width of the saloon giving ample dining space for the entire crew. Below the settees are the rigid water tanks and additional stowage space. Additional stowage space is provided behind the settee backs and lockers and shelving installed above. The saloon is fitted out in teak with a choice of soft furnishings and carpets. Ventilation is provided by an opening deck hatch and dorade ventilators.

Navigation Area: Situated aft of the saloon to starboard. The chart table is a teak desk with opening top to provide chart stowage space. A nest of drawers is fitted beneath the chart table and a bookshelf fitted to the ships side. Ample bulkhead space is provided for fitting instruments. Also sited in the navigation area is the electrical distribution board, which is fitted with circuit breakers and indicator lights.

Toilet Compartment: Aft of the navigation area. This compartment is fully fitted out with a marine toilet, hot and cold pressurised water, wash basin, shower stall with separately plumbed in shower, paper holder, toothbrush holder, and towel rail. The shower stall is drained by an electric pump. The whole compartment is fitted out in easily cleaned laminate. Ventilation and light are provided by an opening deck hatch and opening portlight.

Galley: Situated aft of the saloon on the port side. This area is fully fitted out with pressurised hot and cold water, twin sinks, one with chopping board cover, 2 burner gas cooker, with oven and grill fitted with gimbals, pan clamps, stainless steel crash bar and fold away worktop. A top opening refrigerated ice box is fitted below the galley worktop. There is ample stowage space with lockers and drawers for crockery, cutlery, food and utensils. The galley is fitted out in teak with easily cleaned laminate worktops.

Aft cabin: This extremely large cabin occupies the after end of the boat. Access is from a door aft of the galley. The cabin is fitted with an 'L' shaped settee, vanity desk, large double berth and generous hanging locker and stowage space. Light and ventilation are provided by an opening deck hatch and opening portlights.

Cockpit: The large aft cockpit has seating on all sides with well designed coamings for protection and comfort. Cockpit locker space is provided to port and starboard which also incorporates a ventilated gas bottle storage area with sufficient room to take 2 x 10lb gas bottles, one bottle is supplied as standard. The cockpit is fitted with wheel steering pedestal complete with compass and engine controls. The engine control panel is mounted into the cockpit coaming. An instrument console is fitted over the main hatchway complete with echo sounder and log and additional space for further instrumentation. All sail controls are led aft to the cockpit.

Engine: Volvo 2003 (28hp) 3 cylinder diesel engine with reduction gearbox, stainless steel propeller shaft with remote stern gland greaser, 2 bladed fixed propeller and 'P' bracket. The engine is flexibly mounted and acoustically insulated.

Electrical: 2 heavy duty 12v batteries with 3 position distribution switch, battery state indicator. Alternator charging from the engine Master distribution panel incorporating circuit breaker switches and indicator lights. Refrigerator, full cabin lighting, navigation lights complete with deck flood light. Automatic fresh water pressure pump, shower waste water pump, 240 volt razor socket. Cathodic protection.

Instrumentation: Echo sounder and speedo/log, compass, engine instrument panel, battery state indicator, fuel and water tank gauges.

Deck Fittings: Stainless steel pulpit and pushpit, complete with pushpit gate. Stanchions and sockets with twin stainless steel guard wires. Stainless steel stemhead fitted with bow roller. 4 mooring cleats. 2 x 2 speed genoa sheet winches and cleats. Single speed mainsheet winch and cleat. Sheets and halliards are led aft to the cockpit with single speed halliard winch and 3 rope clutches. Mainsheet track and car and 2 genoa sheet tracks and cars, plus turning blocks. Handrails to coachroof, deck hatches, ventilators and opening ports. Fuel and water tank fillers, moulded in bathing platform complete with swimming ladder.

Spars and Rigging: Silver anodised aluminium mast and boom with stainless steel standing rigging, boom with slab reefing system including winch. Running rigging comprising mainsail and foresail halliard, main boom topping lift, kicking strap, burgee and signal halliard.

Sails: Mainsail with 3 rows of slab reefing points and a working jib supplied by a well known sailmaker complete with tacks, hanks, bags and mainsail cover.

General Equipment: Compass, echo sounder with alarm, electronic speedo/log, sprayhood, anchor with 15 fathoms chain, hand operated bilge pump, 2 dry powder fire extinguishers, 2 warps, 2 fenders, first aid kit, tool kit, emergency tiller, 2 winch handles, gas bottle and spanner.

This is the preliminary outline specification of the Moody 336 and is intended to be a fair representation. However, the right to add to, omit from or amend this specification without prior notice is reserved. (This specification does not constitute an offer to contract).

Moody Marketing & Development Ltd
Swanwick Shore Road, Swanwick, Southampton SO3 7ZL, England
Telephone: Locks Heath 885000 (UK Code 0489 UK Int. Code 44) Telex: 477536

