

MOODY 34 FUEL TANK. CAPACITY 40 GALLONS (181 LITRES.)

MARINE PROJECTS PLYMOUTH LTD.

Material MILD STEEL

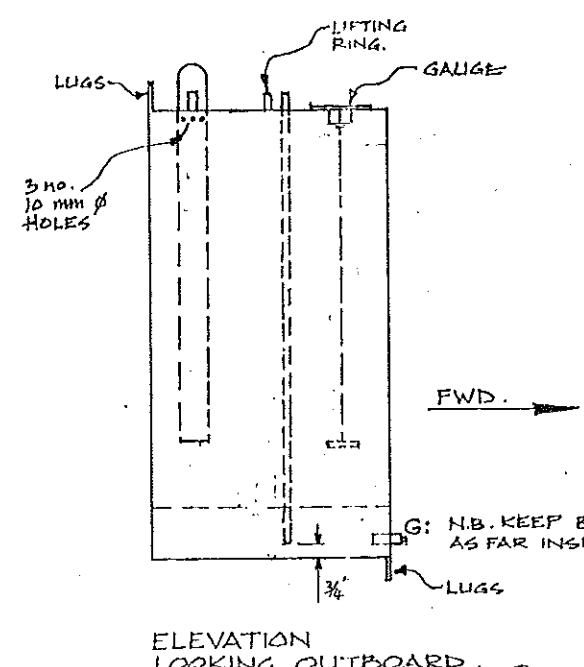
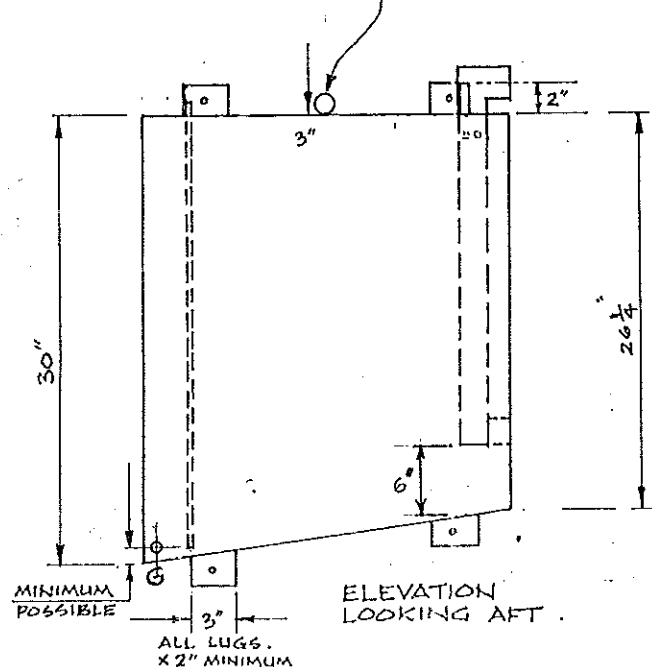
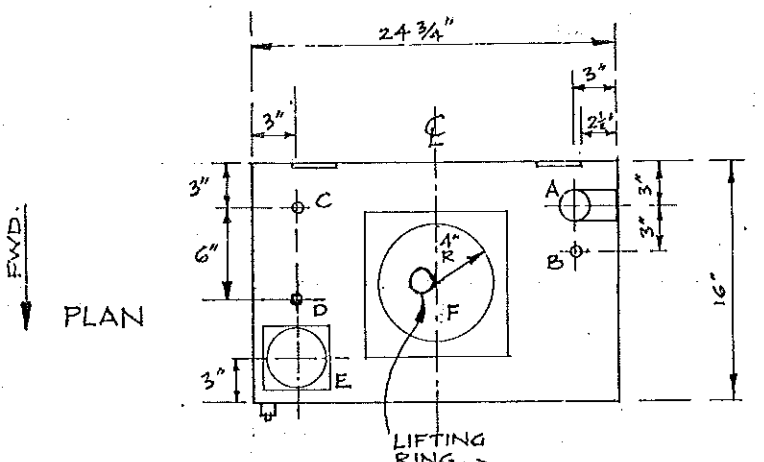
Drawn by JWDW

Date 16/8/83

Scale 1:12

Drwg. No M34 007

Newport Street, Plymouth. Telephone 27771



G: N.B. KEEP BARREL SOCKET AS FAR INSIDE AS POSSIBLE.

KEY TO FITTINGS

- A. FILLER. 2" O.D. WITH 90° ELBOW & DOWNPIPE 6" FROM BOTTOM. DRILL 3 X 10 MM Ø HOLES INTO FILLER DIRECTLY UNDER TANK TOP.
- B. BREATHER. 3/4" O.D. STRAIGHT X 2" HIGH.
- C. RETURN. 3/8" BSP BARREL SOCKET 1" HIGH.
- D. SUCTION. 3/8" BSP BARREL SOCKET 1" HIGH - 7/8" O.D. DOWNPIPE 3/4" FROM BOTTOM.
- E. STANDARD FUEL GAUGE.
- F. STANDARD 10 1/2" X 10 1/2" INSPECTION COVER.
- G. DRAIN PLUG. 3/8" BSP SOCKET: SEE NOTE.

NO.	DATE	MODIFICATION.	INT.
H	25.10.88	2 FILLER DIMS ADDED	KRK
G	24.5.84	BREATHER CONN. NOW 2" HIGH	JWDW
F	17.10.83	BAFFLE REMOVED	JWDW
E	7.10.83	POSITION OF D CHANGED	JWDW
D	14.9.83	FITTINGS ALTERED	JWDW
C	16.8.83	ALTERED TO SUIT GAUGE	JWDW
B	2.8.83	NARROWED & HEIGHTENED	JWDW
	DATE	MODIFICATION.	INT.