

FITTINGS :

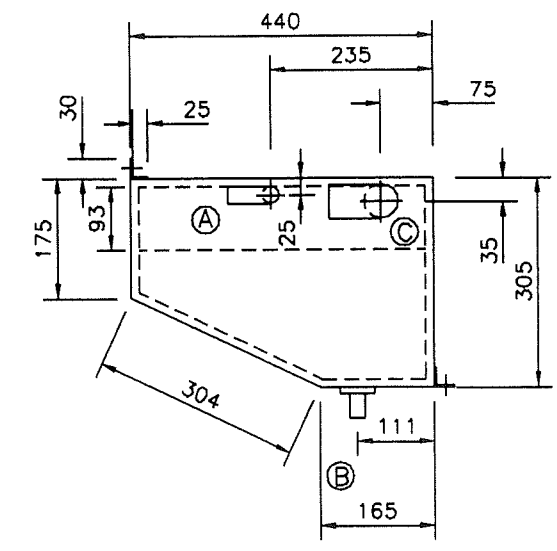
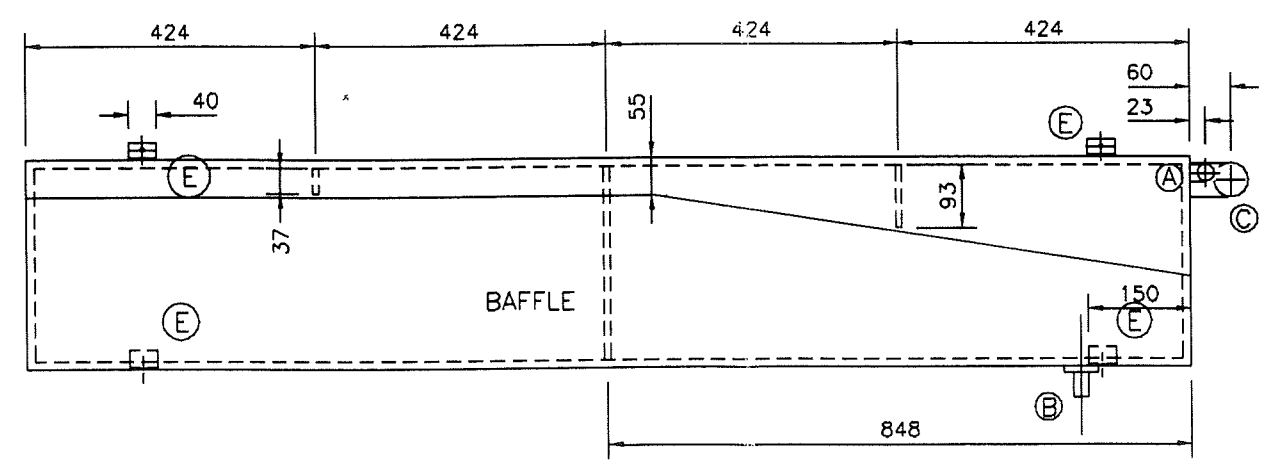
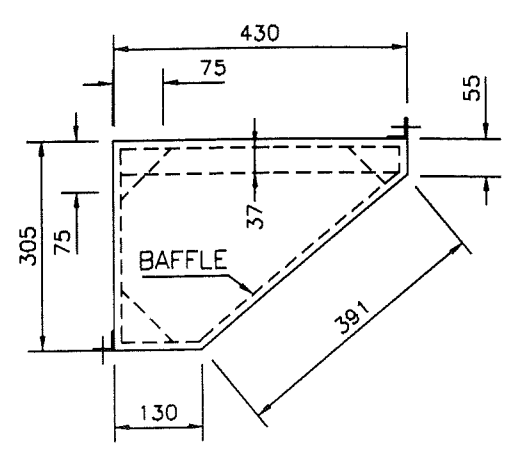
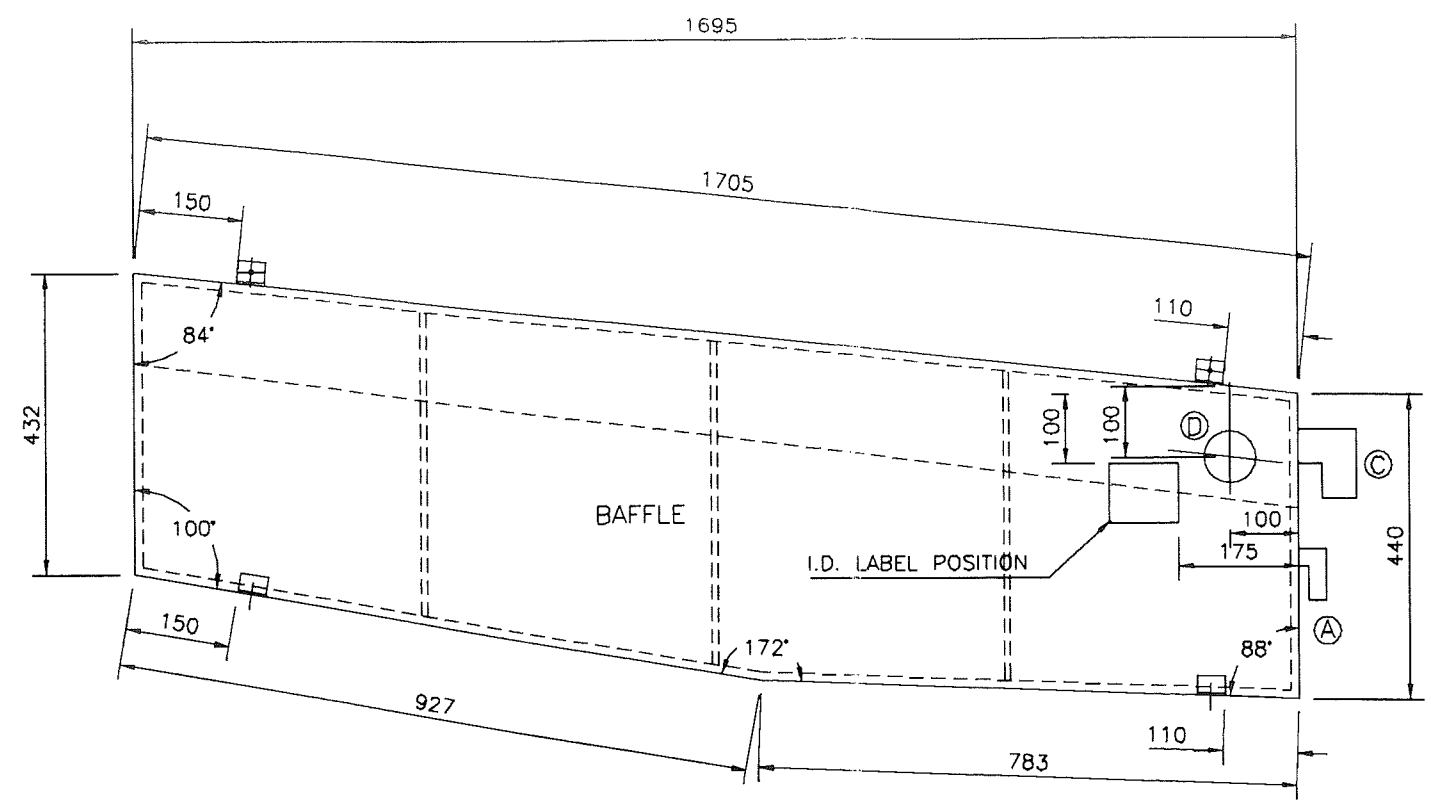
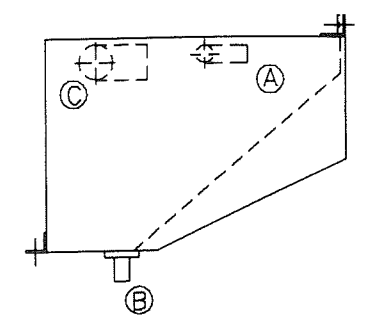
- Ⓐ BREATHER PIPE - $\phi 25$, 90° ELBOW 75mm LONG.
- Ⓑ BALANCE PIPE - $\phi 22$ BARTOL FITTING.
- Ⓒ FILLER PIPE - $\phi 50$, 90° ELBOW 100mm LONG
- Ⓓ SENDER - WEMA TYPE Pt No:654965 30cm.
- Ⓔ HOLDING LUGS - 9mm POLYPROPELENE, 6mm HOLE IN CENTRAL POSITION 10mm FROM TOP.

MATERIAL :

BODY - 12mm POLYPROPELENE
 BAFFLES & STIFFENERS - 9mm POLYPROPELENE

CAPACITY :

35 GALLONS / 159.5 LITRES



UNCONTROLLED
 PRINCESS YACHTS
 03 SEP 2002
 INTERNATIONAL PLC

FOR STARBOARD TANK REFER TO DRAWING No.G6-435.
 TO BE READ IN CONJUNCTION WITH DWG No. G6-580.

ALL DIMENSIONS IN mm'S

MATERIAL CHANGED FROM ALUMINIUM TO POLYPROPELENE.	E	ET	27/10/99	MHR	PC 11516
CHANGED POSITION OF BALANCE PIPE AND ADDED HOLDING LUGS	D	MHR	20.02.97	CMV	PC7548
I.D. PLATE POSITION SHOWN.	C	ET	19.09.96	JRD	PC6575
DIMENSION 1695 mm MOVED TO NEW POSITION	B	JWDW	17.04.96	MHR	PC6178
	ISSUE A	CHECKED BY	DATE	DRAWN BY	CHANGE REF
Marine Projects Ltd. Newport Street, Plymouth, Devon. PL1 3QG.	MODIFICATION TITLE G6 PORT WATER TANK.				

DRAWN BY	INITIALS	DATE	SCALE	DRAWING NUMBER
CHECKED BY	J.W.	18.03.96	N.T.S.	G6-436