

Title MOODY 37 INNER FORESTAY LOCATION

Material —

Drawn by ECT.

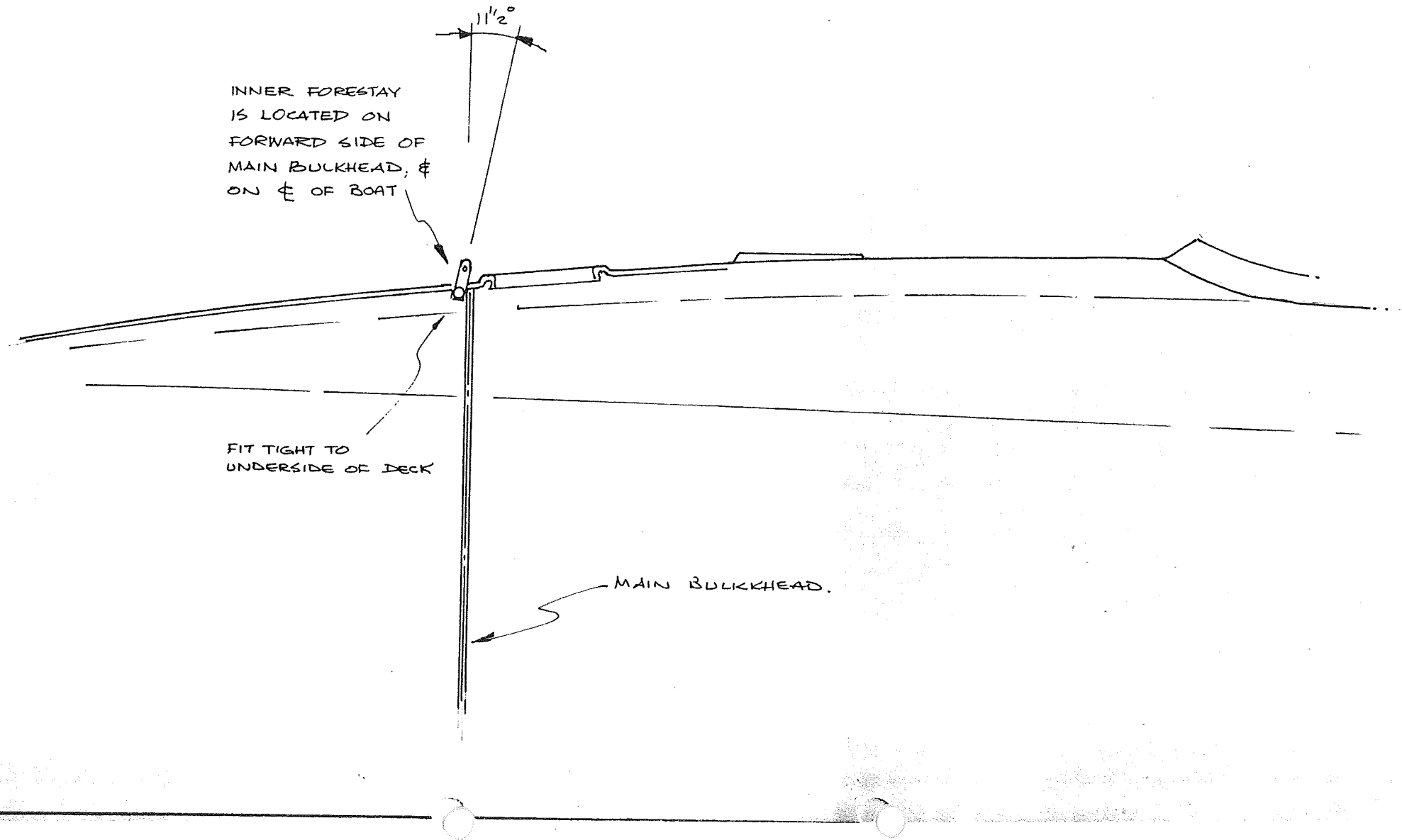
Date 12.9.85.

Scale N.T.S.

Drwg. NO M37.016

MARINE PROJECTS PLYMOUTH LTD.
Newport Street, Plymouth. Telephone 27771

Always work to figured dimensions in preference to scaled dimensions. Refer significant discrepancies to chargehand before putting work in hand.



INNER FORESTAY
IS LOCATED ON
FORWARD SIDE OF
MAIN BULKHEAD, &
ON ϕ OF BOAT

FIT TIGHT TO
UNDERSIDE OF DECK

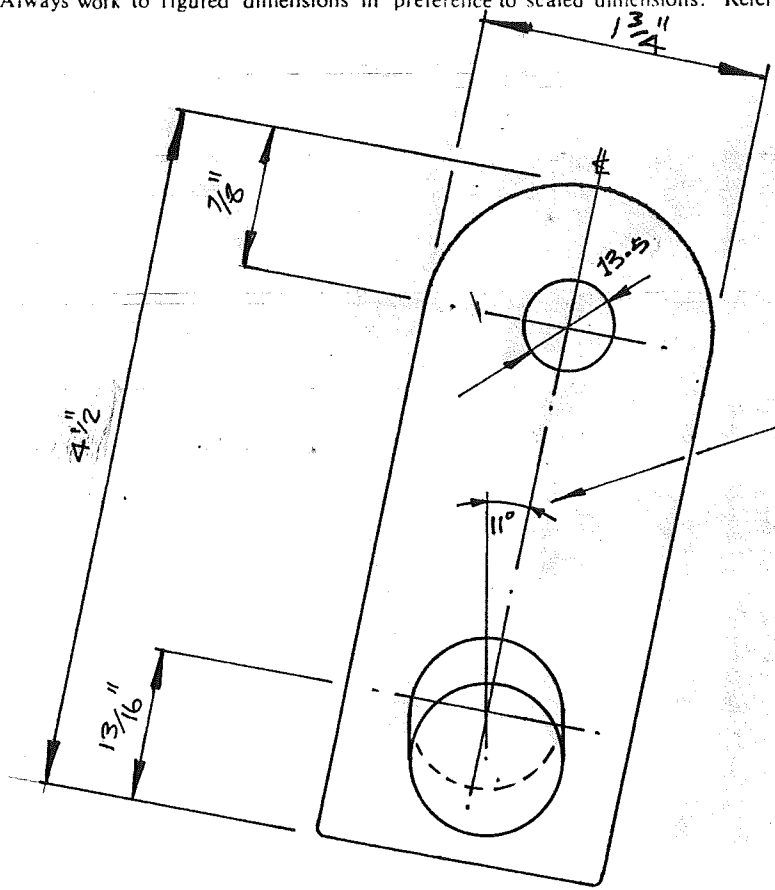
MAIN BULKHEAD.

Title **MOODY 37 BABYSTAY**
 Material **STAINLESS STEEL** Drawn by **ECT** Date **22.5.85** Scale **NTS.** Drwg. NO **M37.007**

MARINE PROJECTS PLYMOUTH LTD.
 Newport Street, Plymouth. Telephone 27771

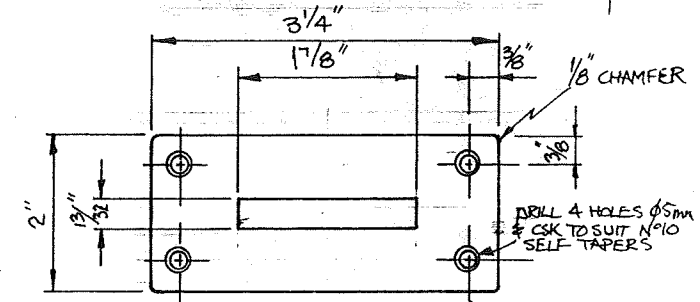
Always work to figured dimensions in preference to scaled dimensions. Refer significant discrepancies to chargehand before putting work in hand.

DATE	MODIFICATION	INT.
29.5.85	LENGTH OF BABYSTAY INCREASED	ECT
9.7.85	WIDTH INCREASED TO 1 3/4	ECT
26-8-86	HOLE INCREASED FROM 13 TO 13.5	JWDW
9-1-87	DECKPLATE DETAIL ADDED	J.F.

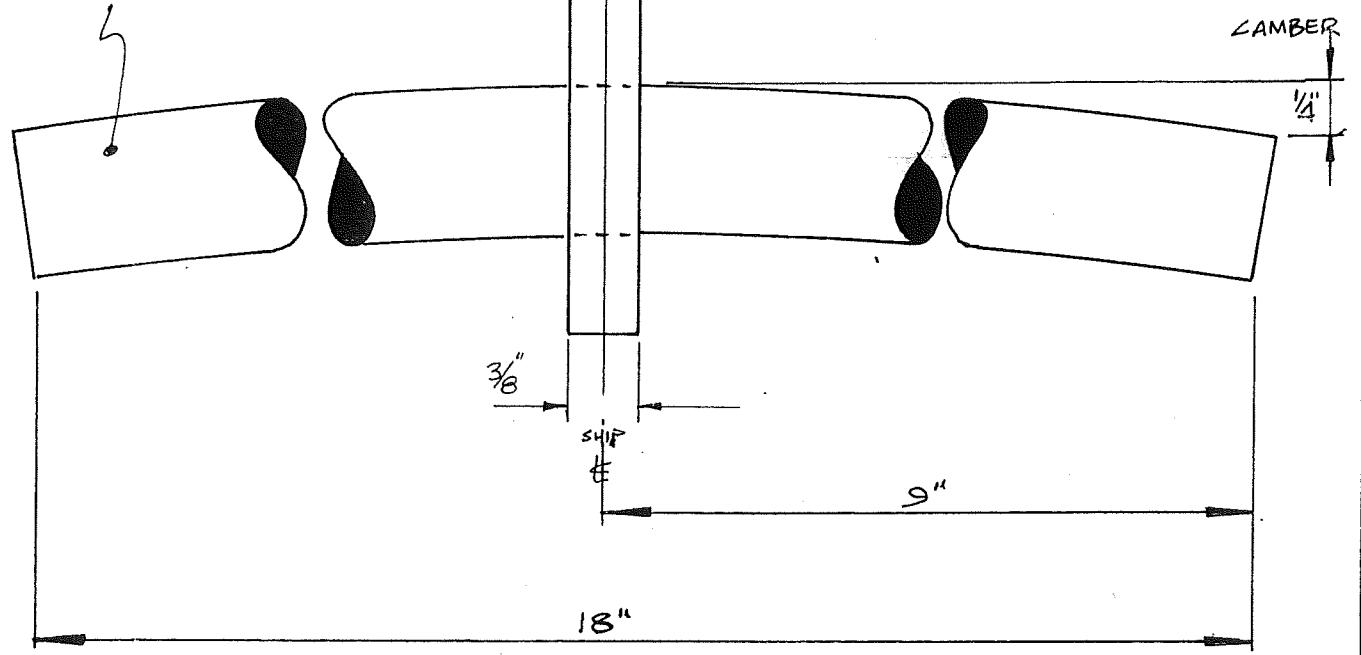


BABYSTAY TO BE WELDED TO BAR FACING AFT BY 11°

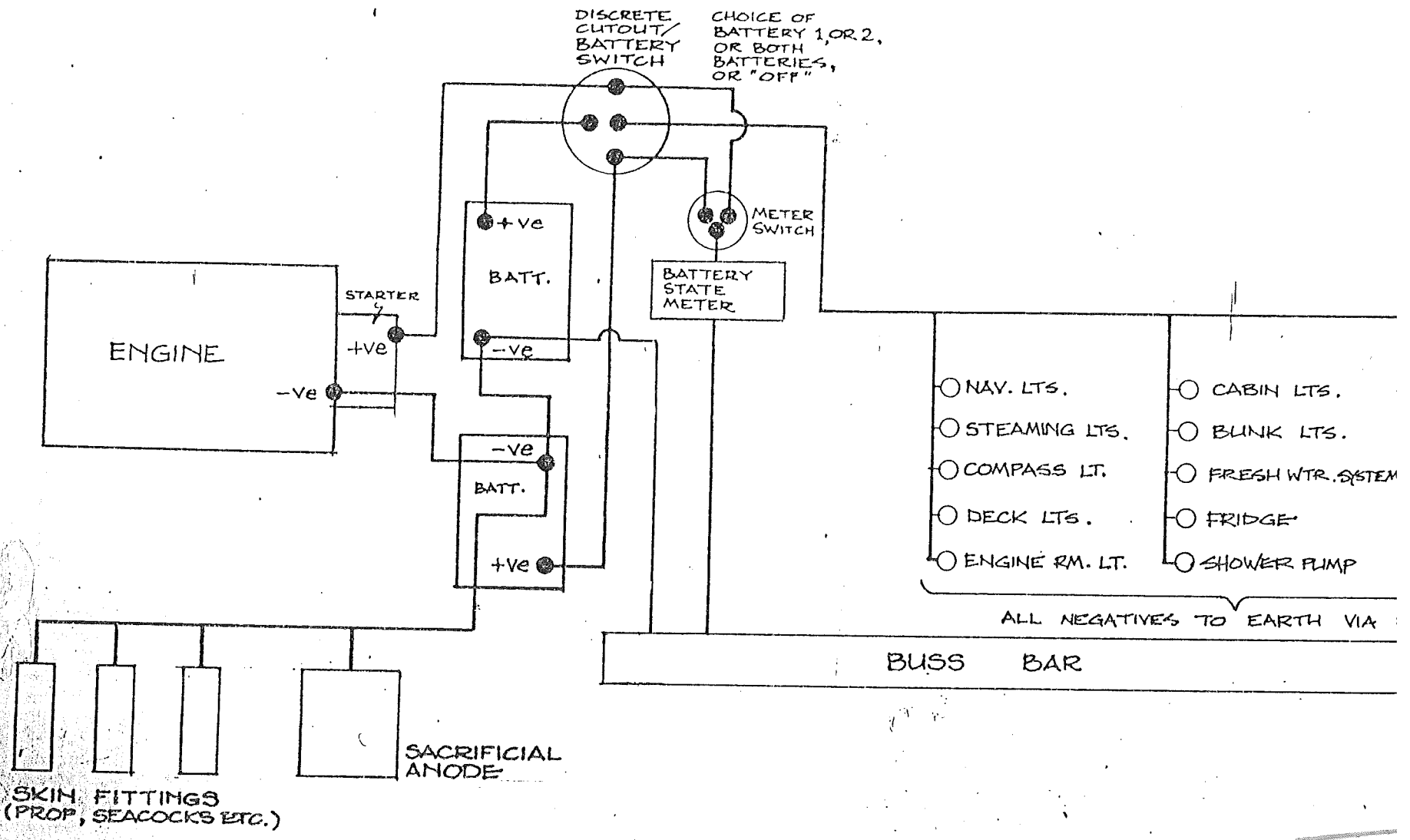
3/4" DIA. BAR



DECK PLATE DETAIL (1 OFF/BOAT)
 MAT'L: 3/16" S/S PLATE



← FORWARD



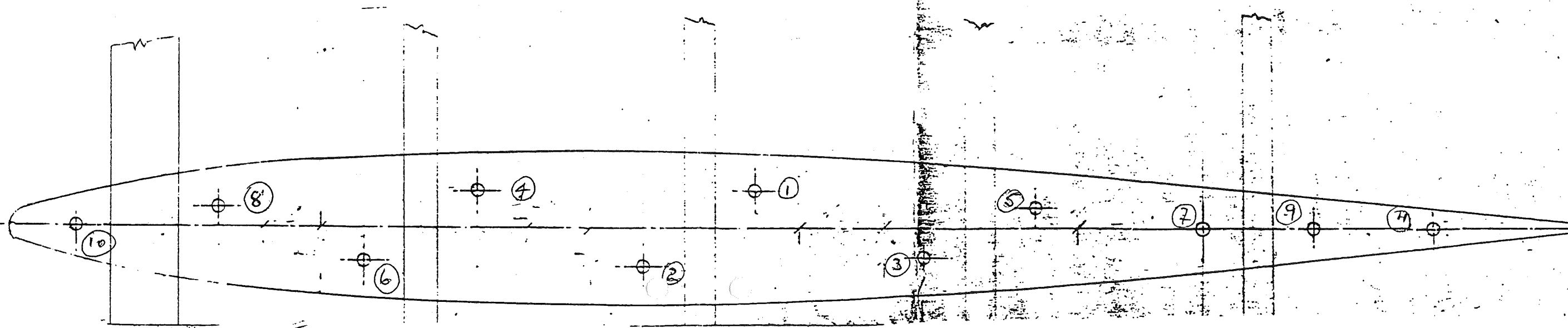
UNGC

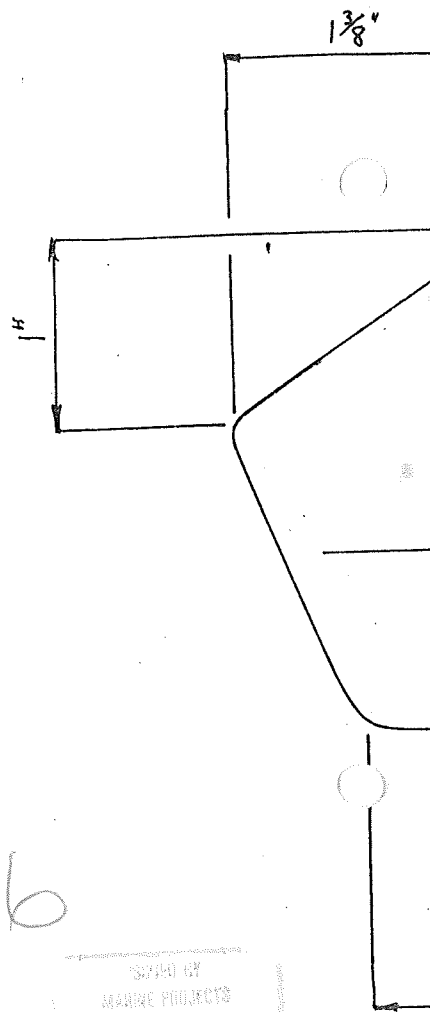
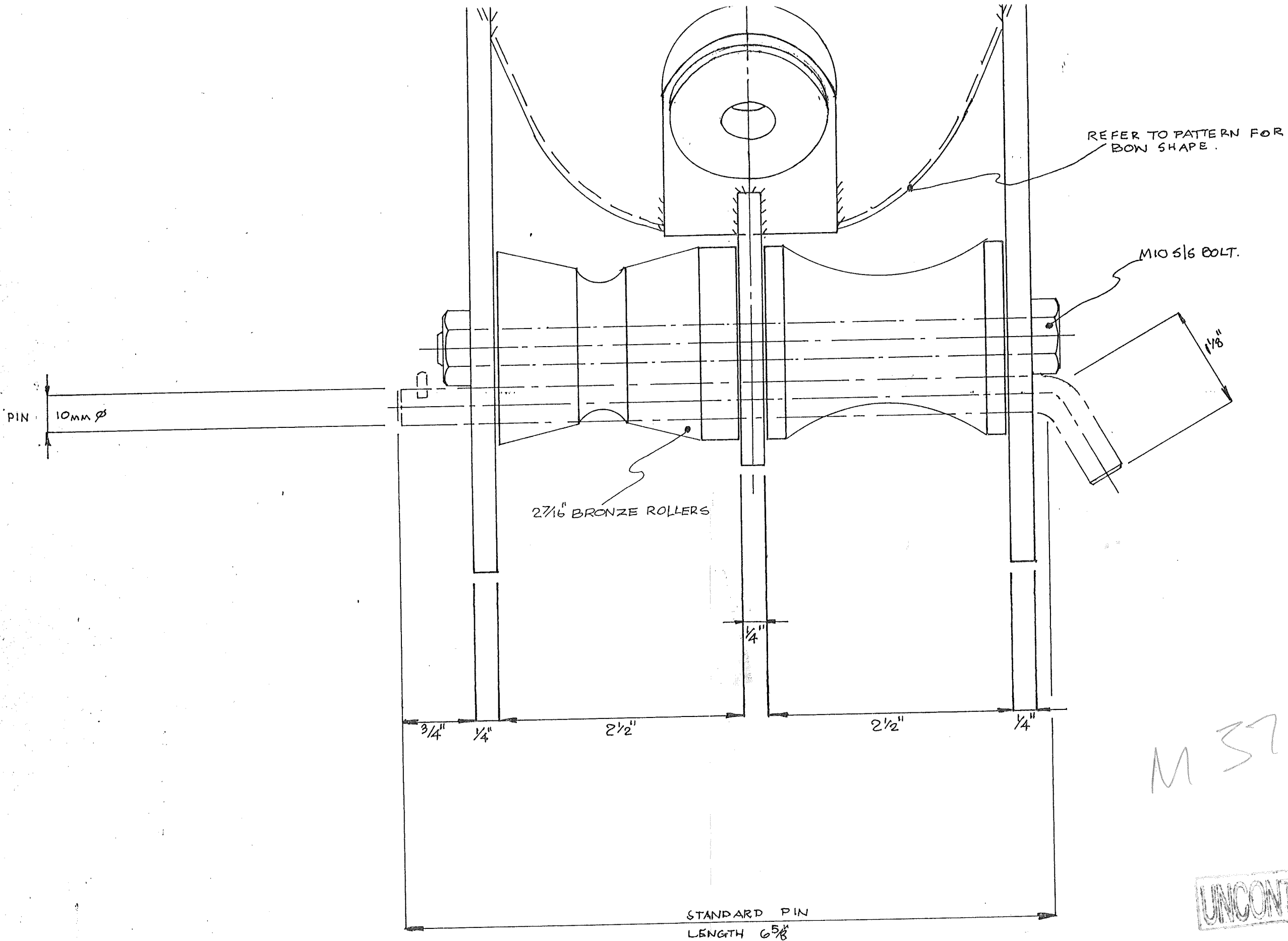
TIGHTENING PATTERN

- ① TIGHTEN BOLTS IN NUMERICAL ORDER
- ② TAKE UP SLACK ON ALL BOLTS BEFORE TORQUING.
- ③ USE THIS PATTERN FOR ALL TORQUE SETTINGS.

TORQUE SETTINGS

- 1st 255 FT/LBS
- 2nd 255 FT/LBS
- 3rd 200 FT/LBS





DRAWING OFFICE
 20 JUN 1994

UNCONTROLLED

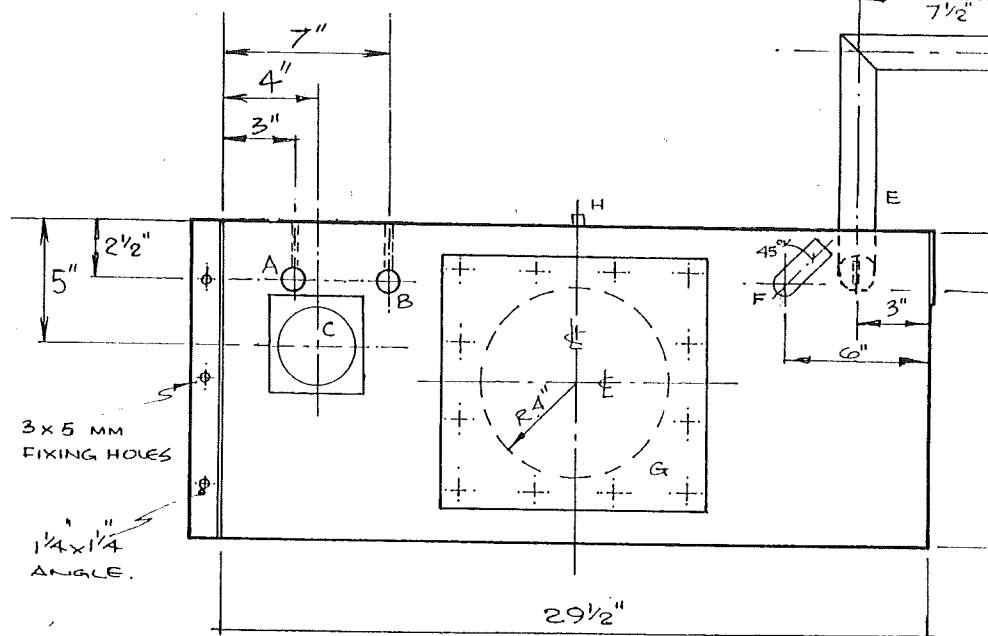
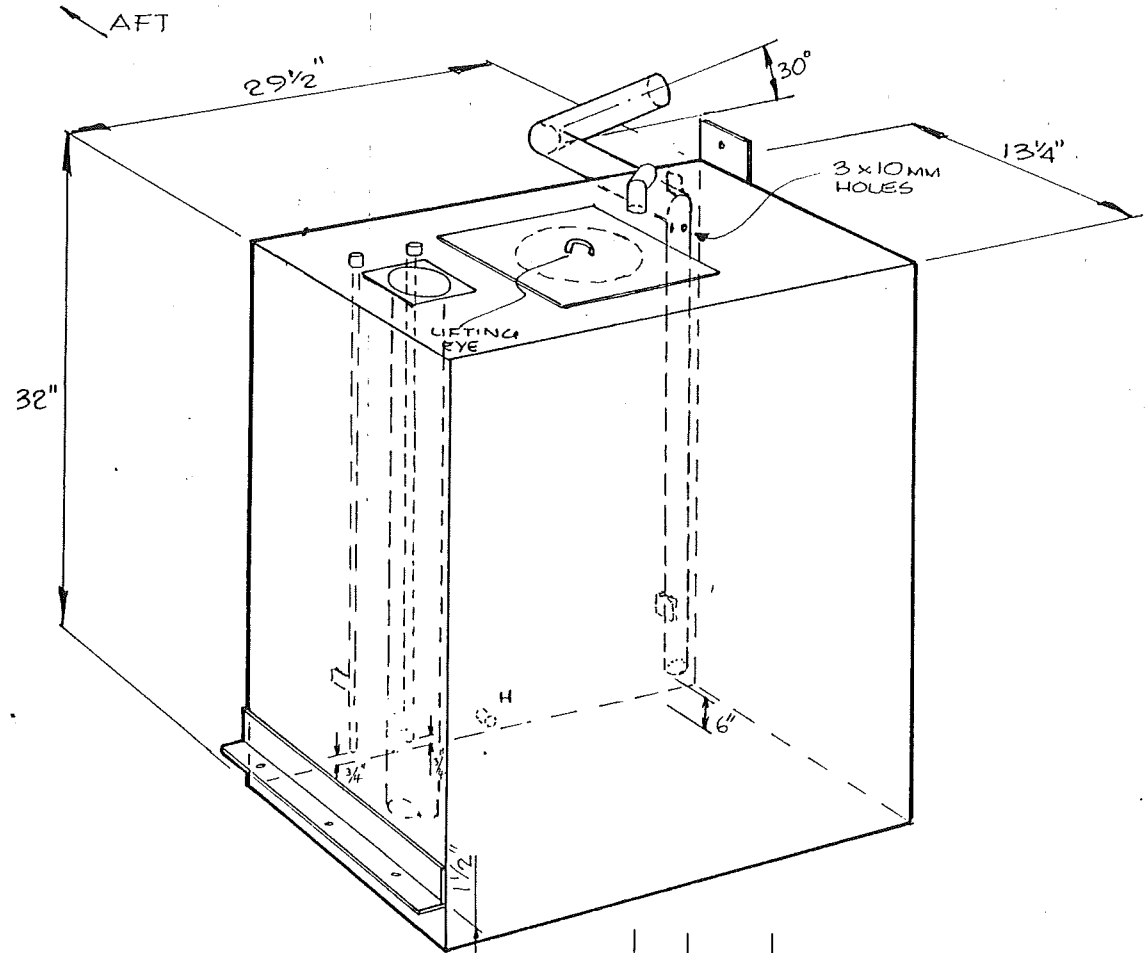
Title MOODY 376 FUEL TANK

APPROX. CAP.
45 GALS. (204 LITRS)
Drwg. NO M37.008

MARINE PROJECTS PLYMOUTH LTD.
Newport Street, Plymouth. Telephone 27

Material MS 2mm THICK Drawn by ECT Date 28.5.85 Scale NTS

Always work to figured dimensions in preference to scaled dimensions. Refer significant discrepancies to chargehand before putting work in hand.



- A. SUCTION ~ 3/8" BSP BARREL SOCKET 1" HIGH WITH 7/8" O.D. DOWNPIPE 3/4" FROM BOTTOM.
- B. RETURN ~ 3/8" BSP BARREL SOCKET 1" HIGH WITH 7/8" O.D. DOWNPIPE 3/4" FROM BOTTOM.
- C. GAUGE ~ TUBE TYPE SENDER 3 1/2" (800 MM) LONG
- D. DELETED FROM TANK.
- E. FILLER ~ 2" O.D. OUTSIDE ELBOW 7 1/2" x 7 1/2", DOWNPIPE STOPS 6" FROM OF OF TANK. DRILL 3 x 10 MM HOLES CLOSE TO TOP OF PIPE.
- F. BREATHER ~ 3/4" O.D. S/S ELBOW AS LOW AS POSSIBLE
- G. STANDARD HATCH COVER ~ 10 1/2" x 10 1/2" x 3/16" PLATE
- H. STANDARD DRAIN PLUG ~ 3/8" BSP AS LOW AS POSSIBLE

CONTINUED OPPOSITE ~ BELOW →

22-11-89	SENDER 'C' WAS 5" FROM BOTH SIDES.	J.FROUD
3-7-89	SIGHT GLASS REMOVED. REPLACED WITH STD FUEL GAUGE FILLER PIPE ADDED	K.B.K
25.10.88	RETURN DOWNPIPE ADDED	KBK
18.5.87	POSITION OF C1. CHANGED & DRAIN PLUG ADDED.	ECT
20.11.85	Fuel Tank thickness included	ECT
19.7.85	EXTENDED FILLER/ELBOW INCLUDED	ECT.
DATE	MODIFICATION	INT.

H	23.1.90	ITEM 'D' DELETED. ITEM 'F' RELOCATED. ITEMS A & SPEC. RE-WRITTEN.	ECT.
ISSUE	DATE	MODIFICATION	INT.

UNCONTROLLED

ISSUED BY THE D.O.
24 MAY 1999

MARINE PROJECTS

Title EXHAUST MIXER BOX TYPE 1

Material STAINLESS STEEL

Drawn by ECT

Date 15.9.87.

Scale NTS.

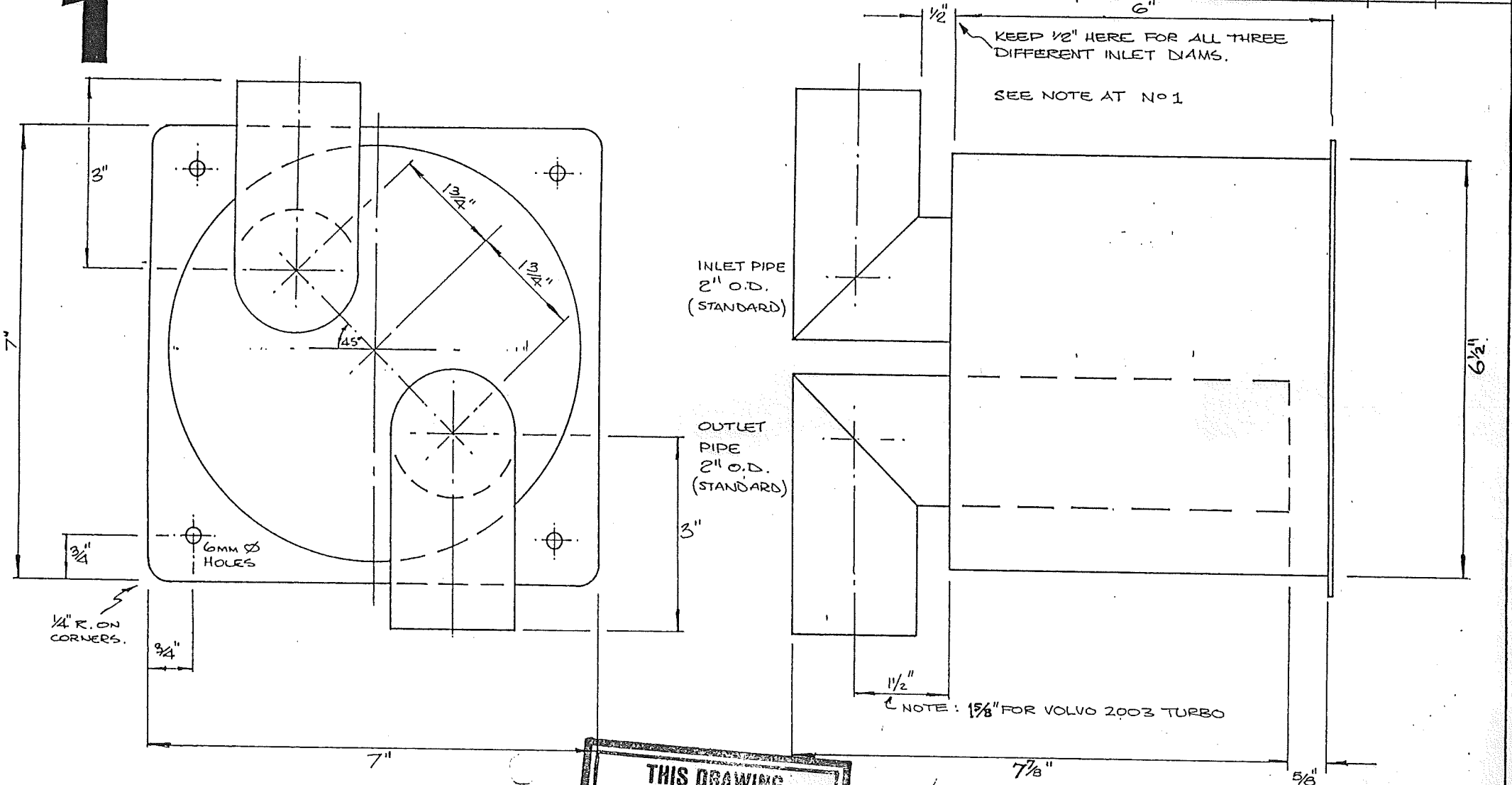
Drwg. No AB 314

MARINE PROJECTS PLYMOUTH LTD.
Newport Street, Plymouth. Telephone 27771

Always work to figured dimensions in preference to scaled dimensions. Refer significant discrepancies to chargehand before putting work in hand.

ISSUE A	MODIFICATION	NAME	DATE
B	OUTLET PIPE FOR VOLVO TURBO 2003 WAS 2" O.D.	K B K	31-5-89

1



THIS DRAWING IS NOT TO BE USED FOR PRODUCTION PURPOSES

MOODY 376 EXHAUST MIXER BOX.

Material: STAINLESS STEEL
 Drawn by: ECT
 Date: 16.9.87
 Scale: NTS
 Drwg. No: M376.036

MARINE PROJECTS PLYMOUTH LTD.
 Newport Street, Plymouth. Telephone 27771

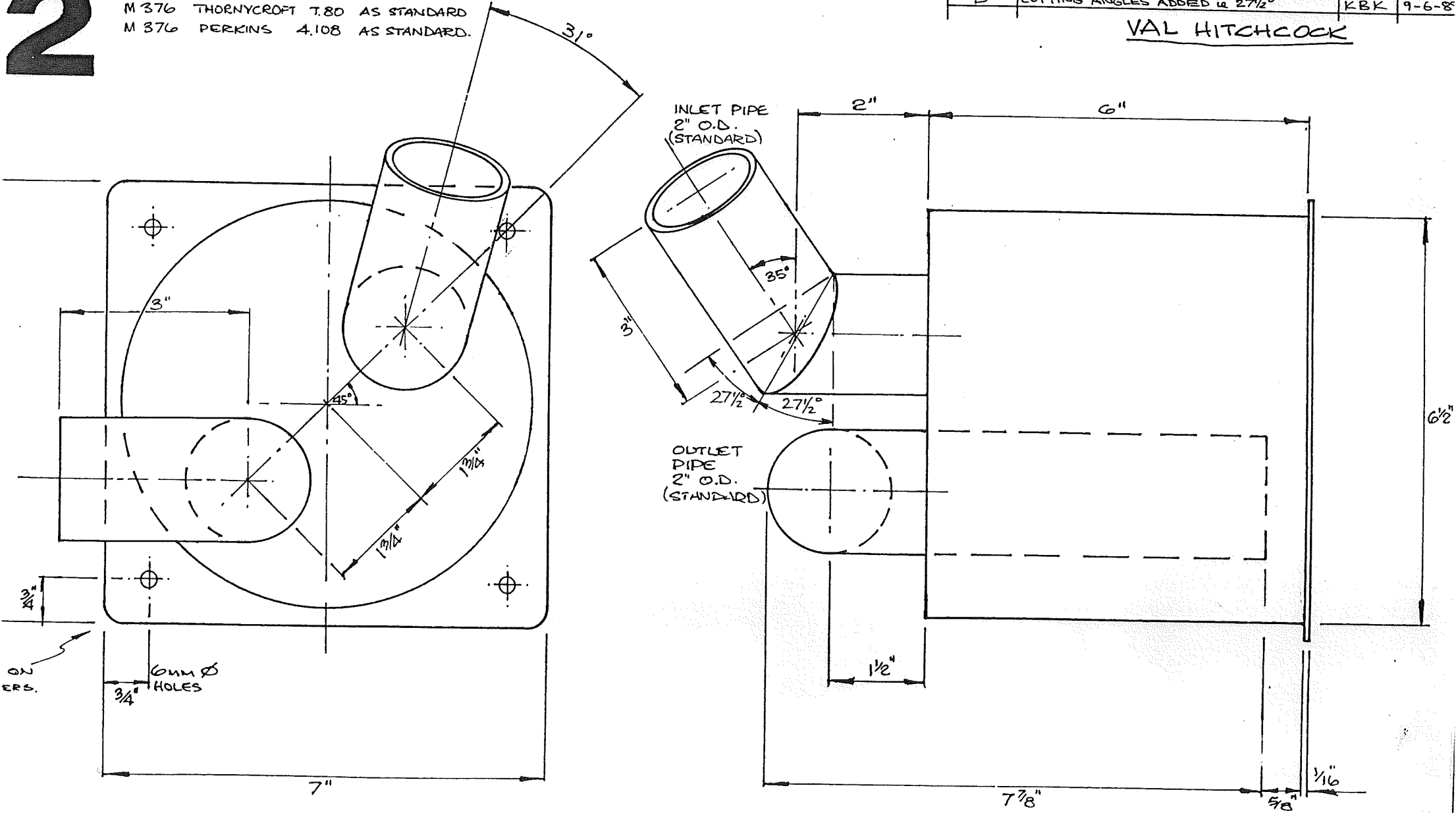
Work to figured dimensions in preference to scaled dimensions. Refer significant discrepancies to chargehand before putting work in hand.

ISSUE	MODIFICATION	NAME	DATE
A			
B	CUTTING ANGLES ADDED @ 27 1/2°	KBK	9-6-88

VAL HITCHCOCK

2

DRAWING NO 2 IS SUITABLE FOR
 M 376 THORNYCROFT T.80 AS STANDARD
 M 376 PERKINS 4.108 AS STANDARD.



7B CADILLAC

TO BE
BONDED WITH
& THRU BOLTED
IN WAY OF
LOADS

2 PLYWOODS
CABIN LONGITUDINAL
BHEAD
(FIXED TO CABIN SOLE)

ASSUME DECK EFFECTIVELY
SEALED.

1 3/4"

10mm

130

4 3/4"

LOADING OF

PLYWOOD NOTE

All plywood to be of approved high grade marine quality. Face and core veneers to be of durable hardwood bonded with WBP type adhesive. Material complying to BSS 1088 or equivalent may be acceptable

LOADS IN WAY OF
C/P LATE LOADS

1/2" PLYWOOD

POET CABIN LONGITUDINAL
B HEAD

(ASSUME FIXED TO CABIN SOLE)

ASSUME DECOR EFFECTIVELY
SEALED.

130

4 3/4"

LOAD HEAD OF

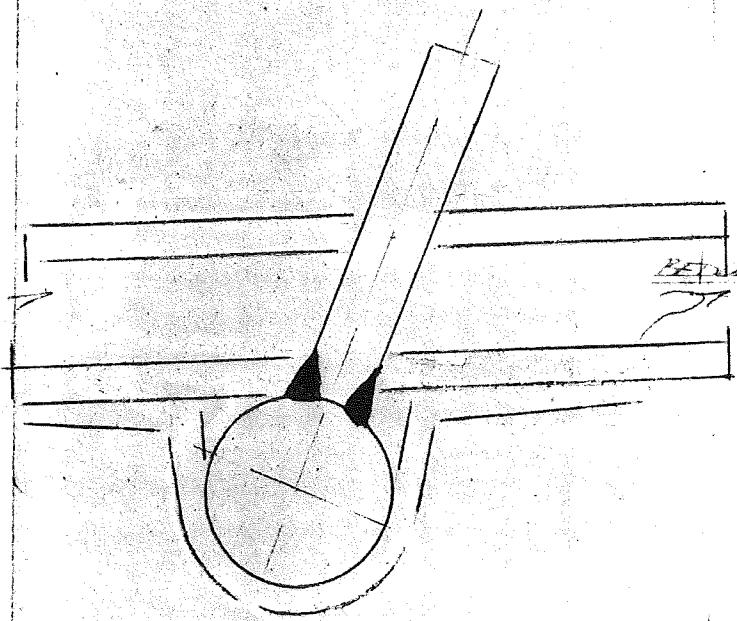
PLYWOOD PAD INSTEAD OF BA

COMPLETE BAR ASSEMBLY
IN WITH BOLTS CSM

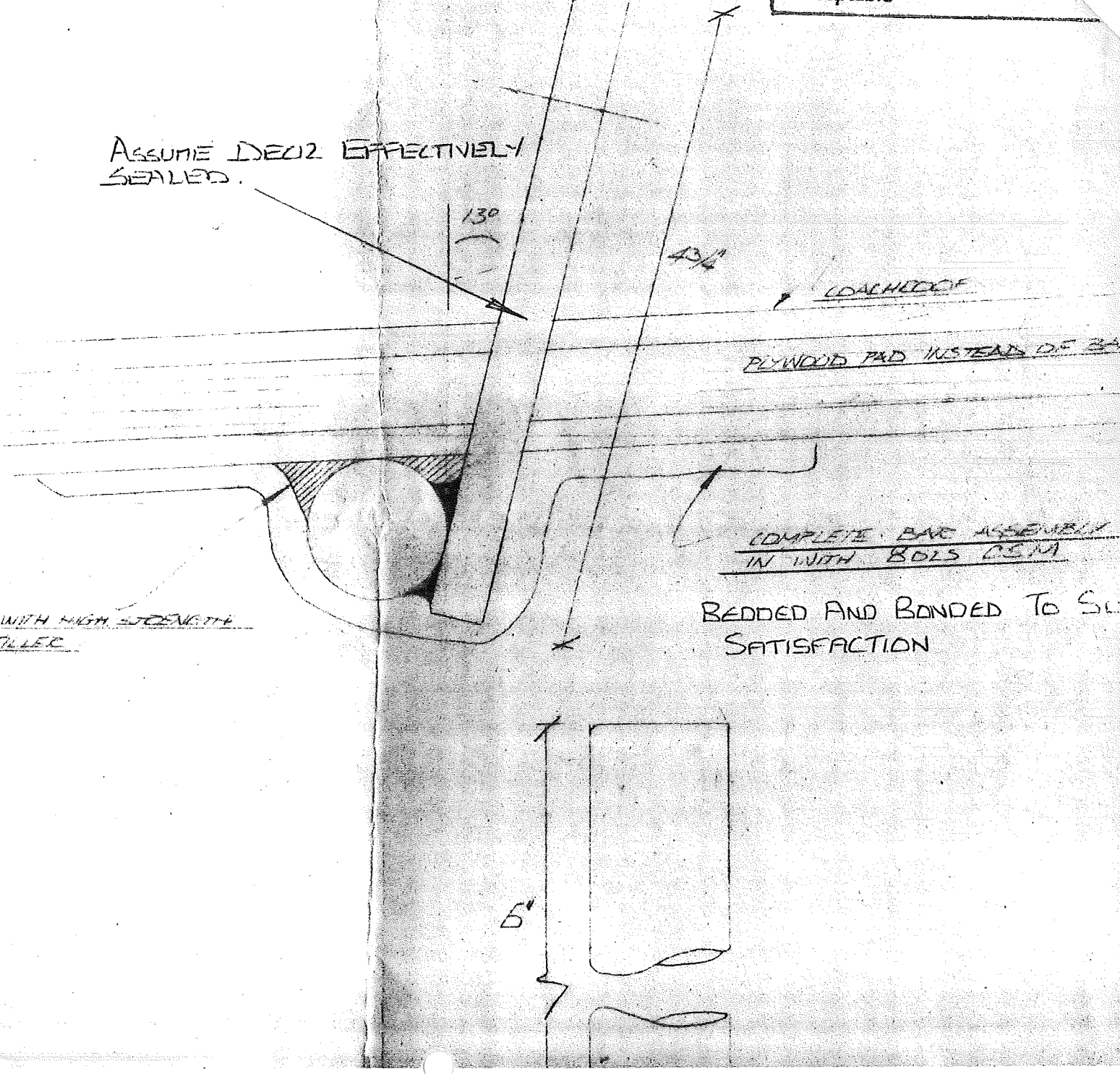
BEDDED AND BONDED TO SURFACE
SATISFACTION

BEDDED IN WITH HIGH STRENGTH
FILLER

5"



ALTERNATIVE ARRANGEMENT

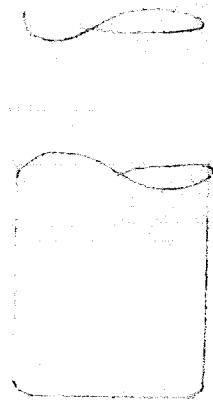


1" DA SS ROD



6'

7'



LLOYD'S REGISTER OF SHIPPING
Y.S.C. DEPARTMENT
SOUTHAMPTON

This drawing is approved subject to the work being carried out to the satisfaction of this Society's Surveyors.

DATE: - 8 JUN 1982 *Alfred Jones*

ANGUS S. ROYCE LTD
 MEDWAY HARBOUR
 -4MB 5
 21-73

TONNAGE 10000

TYPE BULK CARRIER

DESIGNED BY ALFRED JONES 10/81

SCALE 1/4" = 1' DRAWING NO. S-431-19