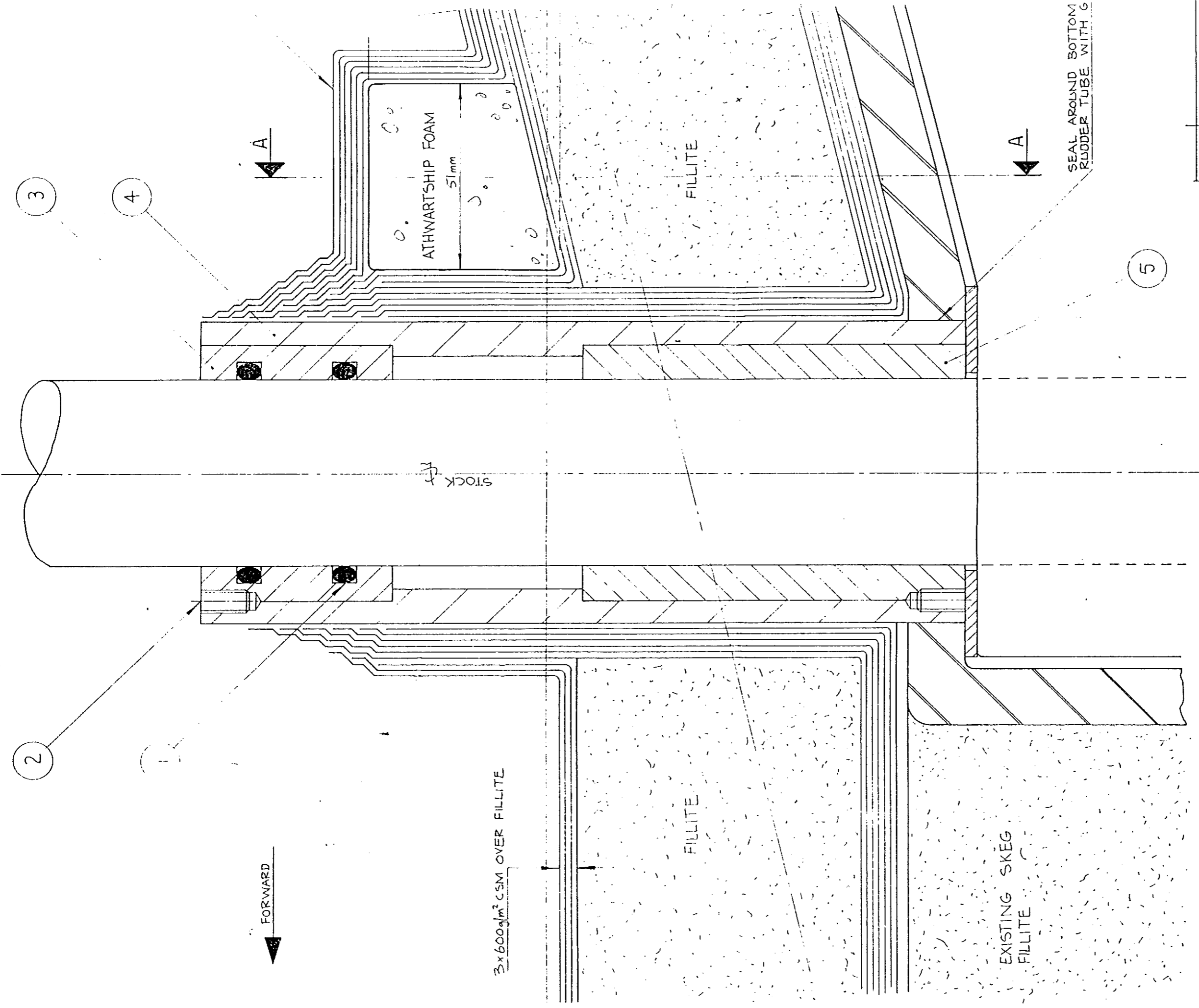


MOODY 419 RUDDER MAINTENANCE

- 01 Disconnect steering quadrant and remove including brass key
- 02 Support rudder and remove copper rivets (drill or cut off heads and drive out rivets with parallel punch)
- 03 Lower rudder complete with skeg heel fitting until clear of rudder tube
- 04 At this stage check bearing tubes and O rings for damage or wear and replace or refurbish as required
- 05 Clean and regrease bearing and shaft
- 06 Clean skeg and heel fitting
- 07 Reposition rudder and refit with new copper rivets and plenty of sealant around keel fitting and all rivets
- 08 Check over rivets and clean up
- 09 Refit steering and test

TS/28.4.92





SECTIONAL VIEW AT SHIP ϕ
LOOKING STARBOARD

ITEM	DESCRIPT
5	BOTTOM BEARING LONG
4	RUDDER TUBE 3' LONG
3	TOP BEARING 2' LONG
2	GRUB SCREW: 1/4" x
1	O'RING SEAL

REFERENCE DRAWINGS:
S-431-14 "MOODY 41 HULL STIFFENING" (LLOYDS APPROVED 9-11-81)